

***PANTHER TRACE II
COMMUNITY DEVELOPMENT DISTRICT***

***Advanced Meeting Package
Business Meeting***

***Monday
May 21, 2018***

6:30 p.m.

At the:

***Panther Trace II Clubhouse
11518 Newgate Crest Drive
Riverview, Florida***

Note: The Advanced Meeting Package is a working document and thus all materials are considered DRAFTS prior to presentation and Board acceptance, approval or adoption.

Panther Trace II Community Development District

DPFG Management & Consulting, LLC
15310 Amberly Drive, Suite 175, Tampa, Florida 33647
Phone: 813-374-9105

Board of Supervisors
**Panther Trace II Community
Development District**

Dear Board Members:

A Regular Meeting of the Board of Supervisors of the Panther Trace II Community Development District is scheduled for **Monday, May 21, 2018 at 6:30 p.m.** at the **Panther Trace II Clubhouse**, 11518 Newgate Crest Drive, Riverview, Florida.

The advanced copy of the agenda for the meeting is attached along with associated documentation. Any additional support material will be distributed at the meeting.

The balance of the agenda is routine in nature and staff will present their reports at the meeting. If you have any questions, please contact me.

Sincerely,

Rebecca Rivas
District Manager

cc: Attorney, Straley Robin
Engineer, Stantec
Clubhouse Manager
District Files

District: **PANTHER TRACE II COMMUNITY DEVELOPMENT DISTRICT**

Date of Meeting: Monday, May 21, 2018

Time: 6:30 P.M.

Location: Panther Trace II Clubhouse
11518 Newgate Crest Drive
Riverview, Florida

Agenda

I. Roll Call

Pledge of Allegiance

II. Audience Comments

III. Landscape & Pond Maintenance

A. Yellowstone Landscape Report Exhibit 1

- Ratification – Electric Clubhouse \$646.67

B. Remson Aquatics Pond Maintenance Report Exhibit 2

- Proposal 1 – Brazilian Pepper Cut and Stump Removal – \$1,895
- Proposal 2 – Brazilian Pepper (20) Cut and Stump Removal – \$9,750

IV. Organizational Matters

A. Consideration & Review of Resumes – Seat #2 (Term Expires 11/18) Exhibit 3

- Eric Lanham
- David F. Steppy
- Claire Shawhan
- Dennis Schulmerich
- David Constantino

B. Board Nomination & Appointment to Vacant Board Supervisor Seat #2

C. Oath of Office of New Supervisors, Supervisor Information Sheet & Form 1. Waiver or Acceptance of Compensation Exhibit 4

D. Consideration and Adoption of 2018-06 Officers Exhibit 5

V. Administrative Matters

A. Consideration and Approval of Minutes of the April 23, 2018 Exhibit 6

- B. Acceptance of the Unaudited March 2018 Financials Statements Exhibit 7
- C. Acceptance of the Operations & Maintenance Expenditures March 2018 Exhibit 8
- D. Issuer Annual Continuing Disclosure Report Exhibit 9

VI. Business Matters

- A. Hillsborough County Number of Registered Voters Exhibit 10
- B. Consideration and Adoption of 2018-05 Adopting the FY 2018-2019 Proposed Budget Exhibit 11
- C. Discussion on Landscape RFP
- D. Discussion on Batting Cages and Permits
- E. Resident Request – Pickle ball Request and Proposal Exhibit 12

VII. Staff Reports

- A. District Manager
 - Water Usage Update
- B. District Counsel
- C. District Engineer
- D. Amenity Manager March 2018 Operations Report Exhibit 13

VIII. Public Comments**IX. Supervisors Requests****X. Audience Comments – New Business****XI. Adjournment**

Dial in Number can be provided upon request to the District office at least 1-week prior to the scheduled CDD Board meetings.

EXHIBIT 1.



941.251.8080 tel
941.251.8081 fax

6108 33rd Street East
Bradenton, FL 34203

www.yellowstonelandscape.com

Panther Trace II CDD Property Report

- Summer service schedule is set with weekly mowing on the Boulevard and ponds are Bi-weekly during May.
- Turf condition – Due to current drought conditions combined with various faults with the irrigation the St Augustine along the Boulevard is severely stressed in areas and has been treated for damaging insects. At this time it is difficult to determine the severity of any damage and will be monitored weekly with follow up reports
- Irrigation –
 - The electrical work for the club house pump has been complete
 - All repairs proposed for the month of April has been completed
 - The inspection for the month of April has been completed
- Bed weed control continues weekly during scheduled service events



Enhancement Proposal

Job Name: Electric Club House
Property Name: Panther Trace II CDD
Client: c/o DPFG, Inc. 15310 Amberly Drive Suite 175
Address: Tampa, FL 33647
City/State/Zip: 813-374-9104
Phone: 813-374-9104

Proposal #
Date: April 16, 2018

Yellowstone Landscape will complete the work described below:

Description

Rewire VFD Phase converter and pump at club house with correct breaker and wire size to stop tripping and damaging equipment.

Electrical work	1	\$	646.67	\$	646.67
TOTAL PRICE					\$ 646.67

ACCEPTANCE OF TERMS

Signature below authorizes Yellowstone Landscape to perform work as described above and verifies that the prices and specifications are hereby accepted.

Payment terms: Net 30 days. All overdue balances will be charged a 1.5% a month, 18% annual percentage rate.

Limited Warranty: All plant material is under a limited warranty for one year. Transplanted plant material and/or plant material that dies due to conditions out of Yellowstone Landscape's control (i.e. Acts of God, vandalism, inadequate irrigation due to water restrictions, etc.) shall not be included in the warranty.

Client:

Anthony Cunha

Prepared by:

Jorge Mendoza

Date: 4/17/2018

Date: April 16, 2018

Internal Use Only	
Project Number:	District: Bradenton
PO Reference:	Date Work Completed:

EXHIBIT 2.



Panther Trace II CDD Water Way Inspection Report

Prepared by:

Remson Aquatic

Matthew Remson – Environmental Scientist

11207 Remson Lane, Riverview, FL 33578

Phone: Cell; 813-748-2433 Fax: 813-671-0386

Pond: 1

Comments:

Little to no Torpedo Grass or Algae blooms were found in this site.



Pond: 2

Comments:

Little to no Torpedo Grass or Algae blooms were found in this site.



Pond: 3

Comments:

Little to no Torpedo Grass or Algae blooms were found in this site.



Pond: 4

Comments:

Little to no Torpedo Grass or Algae blooms were found in this site.



Pond: 5

Comments:

Little to no Torpedo Grass or Algae blooms were found in this site.



Pond: 6

Comments:

Little to no Torpedo Grass or Algae blooms were found in this site.

Underwater weeds were present and treated.



Pond: 7

Comments:

Little to no Torpedo Grass or Algae blooms were found in this site.



Pond: 9

Comments:

Little to no Algae was found in this site.

Torpedo grass was found in this site and treated.



Pond: 23

Comments:

Little to no Algae was found in this site.

Torpedo grass was found in this site and treated.



Pond: 30

Comments:

Little to no Algae was found in this site.

Torpedo grass was found in this site and treated.



Pond: 31

Comments:

Torpedo grass and Underwater weeds were found in this site and treated.



Pond: 32

Comments:

Torpedo grass and Underwater weeds were found in this site and treated.



Pond: 33

Comments:

Little to no Torpedo Grass or Algae blooms were found in this site.



Pond: 34

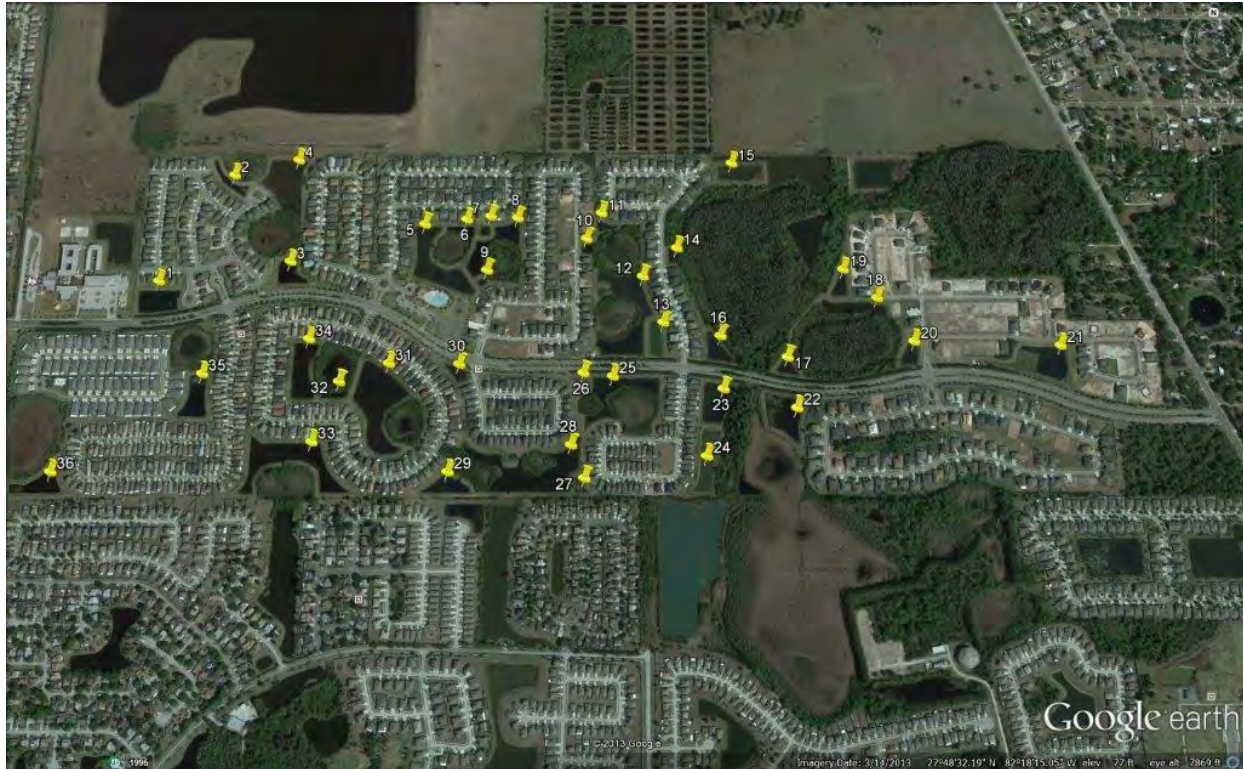
Comments:

Little to no Torpedo Grass or Algae blooms were found in this site.



Panther Trace II Waterway Report

05/14/2018



Remson Aquatics LLC

Lake Management

813-748-2433

Panther Trace II CDD

Riverview, FL

Remson Aquatics

11207 Remson Lane
Riverview, FL 33579
(813) 671-2851
kar@remsonaquatics.com
www.remsonaquatics.com

ESTIMATE

ADDRESS

Panther Trace II CDD
c/o DPFG
250 International Parkway,
Suite 280
Lake Mary, FL 32746

SHIP TO

Panther Trace II CDD
c/o DPFG
250 International Parkway,
Suite 280
Lake Mary, FL 32746

ESTIMATE # 1042**DATE 04/23/2018**

ACTIVITY	AMOUNT
Conservation Maintenance Conservation Maintenance for the area behind 11451 newgate crest dr.. The properties conservation area has a recruitment of brazilian pepper and cut trees in need of maintenance Scope of work; cut pepper trees remove off site Treat stumps with Garlon herbicide	1,895.00

TOTAL**\$1,895.00**

Accepted By

Accepted Date

Remson Aquatics

11207 Remson Lane
Riverview, FL 33579
(813) 671-2851
kar@remsonaquatics.com
www.remsonaquatics.com

ESTIMATE

ADDRESS

Panther Trace II CDD
c/o DPGF
250 International Parkway,
Suite 280
Lake Mary, FL 32746

SHIP TO

Panther Trace II CDD
c/o DPGF
250 International Parkway,
Suite 280
Lake Mary, FL 32746

ESTIMATE # 1041**DATE 04/23/2018**

ACTIVITY	AMOUNT
Conservation Maintenance	9,750.00
Conservation Maintenance of 350 feet of Brazilian Pepper behind the homes on newgate crest dr.. We estimate there are 20 large Brazilian pepper trees behind 6 homes. Brazilian pepper chokes an ecosystem, once establish it will kill all natural and indicative plant species.	
Scope of work; Cut pepper trees and leave a 4 inch stump remove off site treat stumps with garlon herbicides	
<hr/>	
TOTAL	\$9,750.00

Accepted By

Accepted Date

EXHIBIT 3.

ERIC D. LANHAM

11451 Newgate Crest Drive Riverview, FL 33579

(813) 956-3508

eric.lanham@aol.com

<https://www.linkedin.com/in/ericlanham>

PROFESSIONAL SUMMARY

Senior Program Manager and Retired Senior Military Officer with a Top Secret / SCI Security Clearance offering 26+ years of proven experience leading current and future planning efforts of U.S. Special Operations. Specifically focuses on the collaboration and integration of Special Operations' resources through direct liaison and coordination across a multitude of U.S. Government Interagency, International Military Forces, Non-Governmental Organizations, and Foreign National Governments. Possess a comprehensive background in Operations / Logistics Management, Risk Mitigation, and Problem Solving derived from conducting and supervising domestic and global Special Operations in over 30 countries simultaneously. Possess extensive knowledge in the art of Strategic and Operational Planning, with a focus on task accomplishment, prioritization and producing effects based results.

- Special Operations
- Leadership / Supervision
- Integration Coordination
- Logistics Management
- Training and Development
- Assessments and Analysis
- Program / Project Management
- Strategic Communication
- Quality Assurance / Control

PROFESSIONAL EXPERIENCE

U.S. GOVERNMENT – Department of Defense Contractor

2017 - Present

Jacobs Mission Operations Group (MOG) Program Manager / Assessments Analyst

UNITED STATES ARMY – Various Locations

2004 – 2016

United States Special Operations Command, Program Manager (2012 – Present)

Program of Record Manager, responsible for each Theater Special Operations Commands' Civil-Military Engagement Program mission and its accomplishment of their associated Geographic Combatant Commands' line of effort priorities.

- Chief of Current Operations Officer responsible for the supervision and execution of day-to-day Special Operations steady state activities consisting of liaising and planning with senior Government officials across numerous agencies both U.S. and Foreign to ensure proper and timely commitment of monies, personnel and equipment were allocated to enable mission continuity; consistently accomplished program goals and objectives, budget expenditures, work load distribution
 - Responsible for the obligation, commitment and fiscal accountability of an annually increased budget now exceeding \$21M.
 - Managed the quarterly reporting to include the detailed line item justification of all expenditures to U.S. Congress and the Joint Staff.
- Senior approving official for all J3 Directorate personnel travel and associated budget expenses.
- Chief of Plans for the integration of U.S. SOCOM's Civil Military Engagement Program Operations, Activities, and Actions into all Command wide current and future plans and operations.
 - Developed a program assessment framework enabling the ability to measure quantifiable goals resulting in 4 consecutive program budget increases
 - Served as a standing core member of numerous high visibility J35 and J5 planning efforts, collaborating to incorporate Program efforts and ensure effects were synchronized.

- Coordinated daily with several U.S. Embassy Country Team Leads to facilitate access and placement of USSOF, execution of reoccurring activities, to produce accomplishment of shared objectives.

United States Africa Command, Contingency Plan Team Lead (2009 – 2011)

Lead operational planner for a specialized planning group of over 20 personnel tasked with conducting Joint Operational Planning to develop several Chairman of the Joint Chiefs of Staff mandatory contingency response plans.

- Collaborated with Special Operations Command Africa planners while coordinating with the United Nations and a host of other influential organizations to design a systematic logistical resource, used by hundreds of senior foreign government ministry officials, which prioritized critical asset distribution during natural or manmade disasters
- Provided daily, weekly, monthly planning updates to the Chief of Plans, J5 Director, other Directorate Council members, Board of Directors, and the Combatant Commander and his subordinate Commanders to receive guidance, ensure intent and safeguard prioritized critical resources.
- Developed a cooperative business plan model incorporating over 25 separate international, non-governmental, and private organizations efforts towards producing measured results and achieving common goals toward regional emergency preparedness and disaster response.

Operation Iraqi Freedom- Multi-National Forces South East, Civil-Military Officer (2007 – 2008)

Managed a Combined Coalition of International and Joint Military organizations to conduct stability operations as a subset of executing counter-insurgency operations. Coordinated hourly with U.S. Agencies to ensure synchronization of effectiveness and avoid duplication of effort. Integrated Conventional operations with USSOF operations, to facilitate a three pronged approach with our US Interagency. Units were task organized and funded to maximize efficient reconstruction and humanitarian assistance, gain influence and access, and collect vital information for future operations within Iraq; implemented and sustained social service projects conducted across five geographically separated Provinces.

- Project manager responsible for the advertisement, bidding, contracting, salary disbursement, construction supervision and quality control of over 50 successfully completed brick and mortar projects
- Established the first nationally recognized small business micro grant program stimulating economic growth while achieving 85% sustainment rate after the first year
- Developed a train-the-trainer military program resulting in additional capability and capacity in the Iraqi Security Forces

Operation Enduring Freedom, Combined and Joint Special Operations Task Force (2004 – 2006)

Led an elite Special Operations team to execute self-sustaining operations in austere environments; served as the primary liaison between a Provincial Government of Afghanistan and the United States Interagency element.

- Manager of a humanitarian assistance and stability program focused on providing essential social services to over 400,000 less fortunate and underprivileged Pashtun and other nomadic tribes while denying the Taliban a safe haven for organizing planning terrorist activities.
- Synchronized and integrated program objectives and effects into the United States' comprehensive campaign plan for Operation Enduring Freedom
- Accounted for the expenditure of over \$1M worth of Commander's Emergency Response Program (CERP) funding, resulting in producing operational medical clinics, schools, drinking wells, bridges, roads, and the credibility and support of local Afghan government and tribal leaders.

EDUCATION / TRAINING

ERIC D. LANHAM

Master of Science in Business and Organizational Security Management, Webster University

Bachelor of Science in Criminal Justice, West Virginia State University

Joint Professional Military Education Level II

Command and General Staff College (CGSC)

CERTIFICATIONS

Project Management Professional (PMP) – May 2017 (expected)

Certified Emergency Management (CEM) – Dec. 2016 (expected)

Lean Six Sigma Green Belt – Mar. 2017 (expected)

AWARDS

Bronze Star Medal (2)

Defense Meritorious Service Medal (2)

Joint Meritorious Service Award (2)

Others

TECHNICAL SKILLS

Software: Microsoft Office (Word, Power Point, Excel, One Note, Project), SharePoint

Operating Systems: Microsoft Windows, Mac

David F. Steppy
12317 Siltan Peace Drive
Riverview, Florida 33569
(813) 476-2963
daves517@verizon.net

Experience: Department of Homeland Security, Office of Security and Integrity Tampa, FL

Field Security Manager June 2007 to July 2011

- Provides field oversight and support, as required, for physical security (PHYSEC), personnel security (PERSEC), information security (INFOSEC), operations security (OPSEC), and communications security (COMSEC) for the Tampa District with field office locations in West Palm Beach, Jacksonville, Orlando and Tampa.
- Conducts security inquiries and submits Significant Incident Reports (SIRs) regarding security related incidents
- Serves as the primary security expert in new facility construction and building retrofit as related to security hardware design and installation.
- Provides support and services, as needed, for Workplace Violence.
- Coordinates and assists First Responders as needed.

Mission Support Specialist responsible for the oversight of facilities, security, safety and property of the field offices in the Tampa, Orlando, Jacksonville and West Palm Beach areas.

United States Southern Command Miami, Florida 33172
Security Assistance Program Specialist June 18, 2001 to June 23, 2007

- Action Officer for the Foreign Military Financing (FMF), Foreign Military Sales (FMS), Excess Defense Articles (EDA), and the End-use Monitoring (EUM) program.
- Experienced in Microsoft Word, Access, Excel, Outlook, PowerPoint, Frontpage and Project.
- **SECRET** clearance.

United States Southern Command Miami, Florida 33172
Training Program Specialist March 19, 1998 to June 17, 2001

- Program Specialist responsible for overseeing training projects and communications with Security Cooperation Organizations and

multiple US training agencies.**SECRET** clearance.

Dept of Labor & Employment Security, State of Florida Orlando, FL
Medical Disability Case Records October 2, 1996 to July 1, 1997
Specialist

- Maintained records of approximately 3500 claimants sent to the Disability Determinations Office by the Social Security Office for Orlando, Lakeland and Sanford areas.
- Reviewed cases for incomplete medical information.
- Determined if cases met presumptive disability guidelines. If so, fast-tracked case to examiner.
- Reviewed medical services provided by vendors and approved submitted invoices for payment.
- Prepared medical letters to new sources based upon telephone contact with claimant.
- Queried the Social Security Administration System Database when medical data did not have the appropriate information to identify claim.

United States Southern Command Fort Amador, Panama
Computer Operator January 4, 1994 to January 10, 1996

- Computer operator on a Honeywell DPS8 mainframe computer.
- Activated peripheral devices by switch setting and console entries.
- Processed computer jobs in accordance with established processing instructions and guidelines and distributed print output to users as required and in accordance with security directives.
- Maintained Tape Library and disposal of Top Secret classified material.
- Assembled PC hardware, installed system boards, disk drives, memory upgrades and computer software.
- Additional duties were that of budget technician for the Deputy Director's office. This included small purchases through the area contracting office.
- **TOP SECRET** clearance.

United States Army Fort Leonard Wood, Missouri
Chaplain Assistant Supervisor July 11, 1968 to August 1, 1993

- Senior chaplain assistant for the Post Chaplain's Office on the installation.
- Directly supervised an office staff of 3-12 chaplain assistants providing administrative support to the Post chaplain Branch.
- Provide technical supervision to 18-35 chaplain assistants assigned to all chapels on the installation.
- Fund Manager for non-appropriated chaplain fund with a value in excess of \$200,000 per year with approximately 23 individual sub-

accounts for the different denominations on the installation.

- Prepared annual consolidated budget and submitted to the Command.
- Sole contracting officer for the fund, contracting for goods and services required by the chapels.
- Set up and maintained internal controls of funds and property.
- Supervised a 24-hour crisis line.
- Information Management Officer and Information System Security Officer for the Directorate.
- During my career in the Army, I spent three years as an instructor at the US Army Chaplains' School.
- **SECRET** clearance

Education:	Colombia College	Colombia, Missouri
	Bachelor of Arts	1992
	University of South Carolina	Colombia, South Carolina
	Associate of Arts	1976

References: Available upon request

Claire Shawhan

shawhanclaire@gmail.com
(727) 515-6285

EXPERIENCE

Senior Compensation Analyst

Bloomin' Brands, Inc.

Tampa, FL

2017 – Present

- Perform job analysis and evaluation, market pricing/competitive pay analysis, and consultation on base pay, incentive/bonus, total cash compensation, and equity programs.
- Executive Compensation support.
- Partners with finance, accounting and legal to ensure proper disclosure, accounting and audit requirements are met.
- Support all aspects of the long-term incentive plan, including stock options, restricted shares/cash and performance awards.

Corporate Tax Accountant/Senior Analyst

Bloomin' Brands, Inc.

Tampa, FL

2014 – 2017

- Preparation of complex Federal 1120 proformas and multi-state income tax returns; including unitary and consolidated filings with approximately 50 subsidiaries and \$4 billion in revenue.
- Assist in the preparation of forms and calculations with regard to US reporting requirements for foreign subsidiaries; including FBAR, Form 1042, Form 5471, Form 8858, Form 8865, Form 1118 and the calculation of foreign income tax credit limitation.
- Support ASC 740 group with analysis of various items related to accounting for income taxes.
- Coordinate and reconcile state income tax EFT payments for extensions, quarterly estimates, and annual returns; accurately remit more than \$9 million annually.
- Support preparation of state allocation and apportionment schedules including research, analysis, and documentation of various state sourcing rules.
- Provide support for various domestic and foreign tax planning projects including transfer pricing policy implementation and analysis.

Senior Sales Tax Analyst

Bloomin' Brands, Inc.

Tampa, FL

2008 – 2014

- Coordinated and managed sales, use, and liquor tax audits in 47 states for 10 legal entities.
- Researched changes in tax regulations to meet compliance needs and in order to identify potential refund opportunities.
- Researched, analyzed and documented sales and use tax requirements for taxability of all restaurant tangible and real property.
- Responsible for calculation and documentation of FAS 5 reserve.

Sales Tax Accountant/Team Leader

Bloomin' Brands, Inc.

Tampa, FL

2005 – 2008

- Lead 9-person team in all areas of restaurant sales and use tax compliance.
- Supervised accurate preparation of more than 2400 transaction tax returns for 1200 restaurant locations nationwide.
- Prepared bank reconciliations for monthly cash payments in excess of \$20 million.
- Prepared and analyzed sales, use, and liquor taxes for 8 restaurant brands in a minimum of 9 states; an average of 200 returns correctly processed per month.
- Conducted reconciliation of monthly tax return to general ledger account analysis.
- Researched state and local tax discrepancy notices.

Claire Shawhan

shawhanclaire@gmail.com

(727) 515-6285

Staff Accountant

Bloomin' Brands, Inc.

Tampa, FL

2004 – 2005

- Prepared supporting schedules, including analytics for cash, inventory, property, plant, and equipment, prepaids, accruals, and accounts payable.
- Analyzed monthly restaurant payroll.
- Prepared restaurant profit and loss statements.
- Performed monthly close process, including preparation and/or review of journal entries and account reconciliations.

Restaurant Bookkeeper

Bloomin' Brands, Inc.

Boston, MA

2002 – 2004

- Analyzed monthly inventory and prepared financial reporting.
- Arranged invoicing for vendor payment.
- Assisted marketing manager in group-sales objectives.

EDUCATION

Bachelors of Science, Accounting

2008 *University of South Florida* • St. Petersburg, FL

TECHNOLOGY

- OneSource • ProSystems • SAP • Lawson Accounting System • Hyperion Intelligence
- Microsoft Office • Ultimate Software

PROFESSIONAL AFFILIATIONS

Member • *Institute for Professionals in Taxation*

Member • *Restaurant Industry Sales and Use Tax Audit Professionals*

Member • *Women's Interest Network, Bloomin' Brands, Inc.*

April 30, 2018

To: Rebecca Rivas, Development Planning & Financing Group
From: Dennis Schulmerich, Panther Trace II Resident
Subject: Letter of Interest for CDD Board of Supervisors Position

Ms. Rivas,

My name is Dennis Schulmerich and I reside in the Newberry Grove neighborhood in Phase II of Panther Trace. I moved to Panther Trace in 2009 with my wife, Laurie. I recently received an email from Anna Ramirez, Facilities Director, Panther Trace CDD-Phase II indicating an opening for the balance of the term on the Board of Supervisors.

I am interested in being considered for the position on the Board. I have been involved in community service across a range of positions for many years in the town we moved from. Until recently my employment required frequent travel which has made it difficult to dedicate time to community service. Over the last year the travel has dropped off significantly and I'm able to work more out of our Sarasota office. Now that the time presents itself I'd like to find ways to contribute to the community we now call home. I've provided a high level summary of my background which includes past community service, professional employment, and educational background for your consideration. Should you have an interest in a more detailed resume or would like to talk with me please feel free to contact me by phone or email.

Sincerely,

Dennis Schulmerich
11750 Newberry Grove Loop
Riverview, FL 33579
813-381-4296 (Home)
941-730-9193 (Work cell)
dbschulmerich@yahoo.com

Community Involvement

Deputy Town Supervisor (appointed by Town Supervisor)
Town of Chili, Chili New York
2007-2009

Town Councilman (elected position)
Town of Chili
2006 – 2009

Treasurer
Chili Republican Committee
Chili, New York
2002 – 2006

LOI – Dennis Schulmerich CDD Board of Supervisors

Planning Board Member
Town of Chili
2005 - 2006

Zoning Board of Appeal
Town of Chili
2003 - 2005

Recreation Advisory Board
Town of Chili
2001- 2003

Master Plan Development Committee
Town of Chili
2001 – 2002

Board of Directors
Pop Warner Football
Chili, New York
1998 - 2001

Employment

2012 - Current
Intertape Polymer Group
Sarasota, Florida
Director, Business Development

2009 – 2012
Ocean Optics
Dunedin, Florida
Sr. Product Manager

1978 – 2009
Eastman Kodak Company
Rochester, New York
Variety of positions in Business Development, Sales, Manufacturing, Development, and Research and Development

Educational Background

University of Rochester
Rochester, New York
B.S. Chemistry

St. John Fisher College
Rochester, New York
M.B.A.

LOI – Dennis Schulmerich CDD Board of Supervisors

Duke University
Durham, North Carolina
Post-graduate studies – Advanced Management Program

David Constantino
11437 Weston Course Loop
Riverview, FL 33579
508-207-5003
dconstantinolaw@aol.com

AREAS OF PRACTICE:

Florida Blue Sky Laws, FINRA (formerly NASD) Broker/Dealer Litigation and Compliance, Employment Law, Personal Injury, Civil and Commercial Litigation, Corporate Law, Real Estate Law, Consumer Finance Law, Administrative Law, Probate Law, Family Law, Franchise Law, Insurance Law, Trademark Applications, Taxation, and Securities Law.

EMPLOYMENT HISTORY:

February 2018 – Present – Senior Associate – Rahdert & Mortimer, PLLC. (St. Petersburg, FL)

- Represent clients in real estate matters.
- Represent corporate clients in commercial contract disputes.
- Represent clients in probate matters.
- Represent clients in civil and commercial litigation (Plaintiff and Defendant).

January 2016 – February 2018 - Senior Associate - Tosolini, Lamura, Rasile & Toniutti (Miami, FL)

- Represented clients in estate planning and probate matters.
- Represented clients in real estate closings.
- Represented corporate clients in commercial contract disputes.
- Represented corporate clients in franchise contract disputes.
- Represented clients in real estate litigation cases.
- Represented clients in commercial litigation matters.
- Drafted franchise agreements and FTC disclosure documents for corporate clients.
- Processed trademark applications.
- Drafted corporate operating agreements.

June 2014 – December 2015 - Complex Litigation Associate – Kaufman, Englett, & Lynd (Tampa, FL)

- Managed large case-load of complex litigation cases in the areas of real estate, commercial, and civil litigation both as Defendant and Plaintiff.
- Settled numerous cases with insurance companies concerning civil and commercial litigation.
- Drafted demand letters concerning civil and commercial litigation.
- Conducted tax research and advised clients on tax related issues.
- Conducted discovery concerning commercial and civil litigation.
- Attended hearings in furtherance of complex litigation matters.
- Attended hearings in furtherance of family law and criminal law matters.

- Drafted complaints for civil and commercial litigation actions matters including actions for personal injury, partition, evictions, ejectment, unlawful detainer, breach of contract, negligence, business litigation, and unfair and deceptive trade practices.
- Drafted commercial and residential loan documents such as mortgages, promissory notes, quit claim deeds, and warranty deeds.
- Drafted numerous lease agreements both commercial and residential.
- Researched and examined real estate title issues.
- Attended real estate closings.
- Researched and drafted legal opinions.
- Drafted numerous corporate operating documents and filed same with state for creation of business entity.

September 2012 – June 2014 - Senior Attorney - State of Florida, Division of Securities (Tallahassee, FL)

- Provided legal counsel to the State of Florida as a Senior Attorney in the areas of enforcement and registration pursuant to Section 517, Florida Statutes.
- Drafted cease and desist orders, administrative complaints, and stipulation and consent agreements concerning securities law violations.
- Drafted denial of registration final orders and dismissals.
- Conducted legal research and drafting legal memorandums concerning issues related to Section 517, Florida Statutes, and the pertinent administrative code.
- Conducted depositions on behalf of the State of Florida related to potential violations of Section 517, Florida Statutes, and the pertinent administrative code.
- Assisted in the investigation of potential violations of Section 517, Florida Statutes, and the pertinent administrative code.

2005 - 2012 - Attorney - The Law Office of David Constantino (Worcester, MA)

- Provided legal counsel to technology consultation corporations in defense of numerous breach of contracts claims.
- Provided legal counsel to stock brokers and brokerage houses in the defense of claims filed with FINRA/NASD.
- Provided legal counsel to individuals seeking representation with personal injury matters (numerous car accident cases, slip and falls, amusement park injuries).
- Provided legal defense counsel to individuals in unemployment proceedings and other administrative law proceedings.
- Probated numerous wills and trusts in Massachusetts and Florida.
- Provided legal counsel in numerous uncontested divorce actions in Massachusetts.
- Managed complex civil and commercial litigation.
- Drafted all manner of legal pleadings, motions, and memoranda.
- Drafted and responded to discovery.
- Selected, retained, and worked with expert witnesses.
- Delivered oral arguments in motion hearings.

- Interfaced with numerous insurance companies' representatives and their contracted attorneys concerning personal injury matters.
- Supervised junior attorneys.
- Assimilated facts and law to formulate causes of action, defenses, and litigation strategies.

2001-2005 - In-House Counsel – Advisors Capital Investments, Inc. (Woodstock, CT)

- Advised advisory firm corporation and broker dealer corporation on all related business and corporate matters including all compliance related matters, drafting of corporate minutes, and necessary corporate filings.
- Provided legal counsel in the prosecution and defense of claims filed with FINRA/NASD.
- Selected, retained, and worked with expert witnesses.
- Provided legal counsel for securities law claims filed in state and federal court.
- Maintained all relevant databases for Form BD, U4, U5, ADV.
- Managed the dissolution and shut down of the companies California advisory subsidiary.
- Represented advisory firm and broker dealer in all FINRA, SEC, and state regulatory matters.

COURT PROCEEDINGS:

- Researched, drafted, and filed a myriad of legal pleadings, briefs, memoranda, and motions in state and federal courts including numerous motions for summary judgment (prosecuting and defending).
- Prepared and delivered oral arguments in state and federal court.
- Litigated and defended discovery disputes.
- Prepared for and conducted jury and bench trials.

ACCOMPLISHMENTS AND OUTCOMES:

- Negotiated numerous settlements of commercial and civil litigation cases.
- Negotiated numerous Stipulation and Consent Agreements on behalf of the State of Florida concerning violations of Section 517, Florida Statutes, in the form of fines (over \$500,000.00), cease and desist orders, and permanent bars.
- Represented over 60 clients defending administrative law/unemployment hearings in Massachusetts with significant success.
- Represented clients in five FINRA/NASD arbitrations (4 wins 1 loss). I served as lead counsel and conducted the arbitration and all evidentiary issues associated with these actions.
- Settled over 20 NASD/FINRA claims since 2001.
- Accepted as an Arbitration Panelist for FINRA in 2012.
- Negotiated significant monetary settlements for numerous cases involving personal injury matters.
- Obtained numerous monetary settlements defending breach of contract claims on behalf of technology consultation companies.

- Obtained monetary settlements for clients involving securities law actions.
- Obtained summary judgments, damage awards, settlements, and discovery motions, in defense of consumer finance clients. I possess over five years of experience in consumer finance law. I have served as “covering counsel” for a client named Attorneys on Demand from 2008 to 2012. I have represented them in over thirty cases involving consumer finance law.
- Acquired extensive knowledge of Federal Securities 33 Act, 34 Act, and Advisers Act as well as the Florida Securities Act.
- Conducted 5 jury trials and 2 bench trials.
- Managed \$500,000 lawsuit against condo developer through settlement as President of condo association.
- Settled million dollar real estate case in Treasure Island, Florida.
- Defended clients on allegations of insider trading.

EARLIER EMPLOYMENT HISTORY:

2001 Attorney - The Law Office of Ara Margosian (Watertown, MA)

2000-2001 Tax Analyst – Chase Global Funds Service (Boston, MA)

1996-2001 Attorney (part-time) - The Law Office of Michael A. Constantino (Lynnfield, MA)

1997-1999 Tax Reclaim Analyst - State Street Corporation (Quincy, MA)

EDUCATION:

LL.M. in Taxation, University of Alabama School of Law (Tuscaloosa, AL)

LL.M. in American Banking Law Studies, Concentration in Securities Regulation, Boston University School of Law (Boston, MA)

Juris Doctor, Western Michigan University - Cooley Law School (Lansing, MI)

B.A. in Philosophy and Psychology, Boston University College of Arts and Sciences (Boston, MA)

BAR LICENSES AND OTHER PROFESSIONAL LICENSES:

- Massachusetts State Court, Bar No. 645357
- Florida State Court, Bar No. 0942081
- U.S. Court of Appeals 1st Circuit
- U.S. Court of Appeals 10th Circuit
- U.S. District Court District of Colorado
- U.S. District Court District of Massachusetts
- U.S. District Court Middle District of Florida
- U.S. District Court Southern District of Florida
- U.S. Bankruptcy Court District of Massachusetts
- Notary Public for Massachusetts 2001-2012
- FINRA public arbitrator A58242
- FINRA Series 63

AWARDS:

- Boston University Annual Review of Banking Law - *Distinction and Merit*
- Western Michigan University - Cooley Law School - *Dean's List*

PUBLICATIONS:

- *Authored development article "Insurance and Annuities" May 2000*
Boston University Annual Review of Banking Law

ACTIVITIES/MEMBERSHIPS:

- President of the Board of Trustees to the Federal Sq. Condominium Trust (80 units) 2008-2013
- Secretary of the Western Michigan University - Cooley Law School Chapter of the Public Interest Law Society
- Member of the Massachusetts Bar Association
- Member of the Worcester Bar Association
- Member of the Florida Bar Association
- Volunteer Attorney for the Immigration Legal Assistance Program (obtained asylum for political refugees) 2010-2012
- Member of the Dade County Bar Association
- Member of the Hillsborough County Bar Association

REPRESENTATION IN NOTABLE CASES:

- **Zimmermann, On Behalf of Themselves and All Others Similarly Situated, Plaintiffs, Appellees, v. John Puccio; Richard Puccio, Defendants, Appellants, 613 F.3d 60 (2010),**
United States Court of Appeals for the 1st Circuit, Boston. (2010)

- **Advisor's Capital Investments, Inc. et. al. v. Cumberland Technologies, Inc. et. al.** U.S. District Court, Middle District of Florida, Tampa Division, General Jurisdiction Division, Case No. 8:05-cv-00404-SDM-MAP. (2008)
- **Sec v Credit Bancorp, Ltd.** 290 F.3d 80. (2002)

EXHIBIT 4.

OATH OF OFFICE

(Art. II, § 5(b), Fla. Const.)

STATE OF FLORIDA

County of _____

I do solemnly swear (or affirm) that I will support, protect, and defend the Constitution and Government of the United States and of the State of Florida; that I am duly qualified to hold office under the Constitution of the State, and that I will well and faithfully perform the duties of

(Title of Office)

on which I am now about to enter, so help me God.

[NOTE: If you affirm, you may omit the words “so help me God.” See § 92.52, Fla. Stat.]

Signature

Sworn to and subscribed before me this ____ *day of* _____, _____.

Signature of Officer Administering Oath or of Notary Public

Print, Type, or Stamp Commissioned Name of Notary Public

Personally Known ☐ **OR** *Produced Identification* ☐

Type of Identification Produced _____

ACCEPTANCE

I accept the office listed in the above Oath of Office.

Mailing Address: Home Office

Street or Post Office Box

Print Name

City, State, Zip Code

Signature

NEW SUPERVISOR INFORMATION SHEET

PLEASE RETURN COMPLETED FORM TO DPFG

Development Planning & Financing Group, Inc.
Records Management and Administration
15310 Amberly Drive
Suite 175
Tampa, Florida 33647

CDD:

NAME:

ADDRESS:

COUNTY OF RESIDENCE:

PHONE:

FAX:

CELL:

EMAIL ADDRESS:

FORM 1**STATEMENT OF
FINANCIAL INTERESTS****2017**

Please print or type your name, mailing address, agency name, and position below:

FOR OFFICE USE ONLY:

LAST NAME -- FIRST NAME -- MIDDLE NAME :

MAILING ADDRESS :

CITY :

ZIP :

COUNTY :

NAME OF AGENCY :

NAME OF OFFICE OR POSITION HELD OR SOUGHT :

You are not limited to the space on the lines on this form. Attach additional sheets, if necessary.

CHECK ONLY IF ☐ **CANDIDATE** OR ☐ **NEW EMPLOYEE OR APPOINTEE******** BOTH PARTS OF THIS SECTION MUST BE COMPLETED ********DISCLOSURE PERIOD:**

THIS STATEMENT REFLECTS YOUR FINANCIAL INTERESTS FOR THE PRECEDING TAX YEAR, WHETHER BASED ON A CALENDAR YEAR OR ON A FISCAL YEAR. PLEASE STATE BELOW WHETHER THIS STATEMENT IS FOR THE PRECEDING TAX YEAR ENDING EITHER (must check one):

☐ DECEMBER 31, 2017 OR ☐ SPECIFY TAX YEAR IF OTHER THAN THE CALENDAR YEAR: _____**MANNER OF CALCULATING REPORTABLE INTERESTS:**FILERS HAVE THE OPTION OF USING REPORTING THRESHOLDS THAT ARE ABSOLUTE DOLLAR VALUES, WHICH REQUIRES FEWER CALCULATIONS, OR USING COMPARATIVE THRESHOLDS, WHICH ARE USUALLY BASED ON PERCENTAGE VALUES (see instructions for further details). CHECK THE ONE YOU ARE USING (**must check one**):☐ **COMPARATIVE (PERCENTAGE) THRESHOLDS** OR ☐ **DOLLAR VALUE THRESHOLDS****PART A -- PRIMARY SOURCES OF INCOME** [Major sources of income to the reporting person - See instructions]

(If you have nothing to report, write "none" or "n/a")

NAME OF SOURCE OF INCOME	SOURCE'S ADDRESS	DESCRIPTION OF THE SOURCE'S PRINCIPAL BUSINESS ACTIVITY

PART B -- SECONDARY SOURCES OF INCOME

[Major customers, clients, and other sources of income to businesses owned by the reporting person - See instructions]

(If you have nothing to report, write "none" or "n/a")

NAME OF BUSINESS ENTITY	NAME OF MAJOR SOURCES OF BUSINESS' INCOME	ADDRESS OF SOURCE	PRINCIPAL BUSINESS ACTIVITY OF SOURCE

PART C -- REAL PROPERTY [Land, buildings owned by the reporting person - See instructions]

(If you have nothing to report, write "none" or "n/a")

FILING INSTRUCTIONS for when and where to file this form are located at the bottom of page 2.**INSTRUCTIONS** on who must file this form and how to fill it out begin on page 3.

PART D — INTANGIBLE PERSONAL PROPERTY [Stocks, bonds, certificates of deposit, etc. - See instructions]
(If you have nothing to report, write "none" or "n/a")

TYPE OF INTANGIBLE	BUSINESS ENTITY TO WHICH THE PROPERTY RELATES

PART E — LIABILITIES [Major debts - See instructions]
(If you have nothing to report, write "none" or "n/a")

NAME OF CREDITOR	ADDRESS OF CREDITOR

PART F — INTERESTS IN SPECIFIED BUSINESSES [Ownership or positions in certain types of businesses - See instructions]
(If you have nothing to report, write "none" or "n/a")

	BUSINESS ENTITY # 1	BUSINESS ENTITY # 2
NAME OF BUSINESS ENTITY		
ADDRESS OF BUSINESS ENTITY		
PRINCIPAL BUSINESS ACTIVITY		
POSITION HELD WITH ENTITY		
I OWN MORE THAN A 5% INTEREST IN THE BUSINESS		
NATURE OF MY OWNERSHIP INTEREST		

PART G — TRAINING

For **elected municipal officers** required to complete annual ethics training pursuant to section 112.3142, F.S.

☐ **I CERTIFY THAT I HAVE COMPLETED THE REQUIRED TRAINING.**

IF ANY OF PARTS A THROUGH G ARE CONTINUED ON A SEPARATE SHEET, PLEASE CHECK HERE ☐

SIGNATURE OF FILER:

Signature:

Date Signed:

CPA or ATTORNEY SIGNATURE ONLY

If a certified public accountant licensed under Chapter 473, or attorney in good standing with the Florida Bar prepared this form for you, he or she must complete the following statement:

I, _____, prepared the CE Form 1 in accordance with Section 112.3145, Florida Statutes, and the instructions to the form. Upon my reasonable knowledge and belief, the disclosure herein is true and correct.

CPA/Attorney Signature: _____

Date Signed: _____

FILING INSTRUCTIONS:

If you were mailed the form by the Commission on Ethics or a County Supervisor of Elections for your annual disclosure filing, return the form to that location. To determine what category your position falls under, see page 3 of instructions.

Local officers/employees file with the Supervisor of Elections of the county in which they permanently reside. (If you do not permanently reside in Florida, file with the Supervisor of the county where your agency has its headquarters.) Form 1 filers who file with the Supervisor of Elections may file by mail or email. Contact your Supervisor of Elections for the mailing address or email address to use. Do not email your form to the Commission on Ethics, it will be returned.

State officers or specified state employees who file with the Commission on Ethics may file by mail or email. To file by mail, send the completed form to P.O. Drawer 15709, Tallahassee, FL 32317-5709; physical address: 325 John Knox Rd, Bldg E, Ste 200, Tallahassee, FL 32303. To file with the Commission by email, scan your completed form and any attachments as a pdf (do not use any other format) and send it to CEForm1@leg.state.fl.us. Do not file by both mail and email. Choose only one filing method. Form 6s will not be accepted via email.

Candidates file this form together with their filing papers.

MULTIPLE FILING UNNECESSARY: A candidate who files a Form 1 with a qualifying officer is not required to file with the Commission or Supervisor of Elections.

WHEN TO FILE: Initially, each local officer/employee, state officer, and specified state employee must file **within 30 days** of the date of his or her appointment or of the beginning of employment. Appointees who must be confirmed by the Senate must file prior to confirmation, even if that is less than 30 days from the date of their appointment.

Candidates must file at the same time they file their qualifying papers.

Thereafter, file by July 1 following each calendar year in which they hold their positions.

Finally, file a final disclosure form (Form 1F) within 60 days of leaving office or employment. Filing a CE Form 1F (Final Statement of Financial Interests) does not relieve the filer of filing a CE Form 1 if the filer was in his or her position on December 31, 2017.

NOTICE

Annual Statements of Financial Interests are due July 1. If the annual form is not filed or postmarked by September 1, an automatic fine of \$25 for each day late will be imposed, up to a maximum penalty of \$1,500. Failure to file also can result in removal from public office or employment. [s. 112.3145, F.S.]

In addition, failure to make any required disclosure constitutes grounds for and may be punished by one or more of the following: disqualification from being on the ballot, impeachment, removal or suspension from office or employment, demotion, reduction in salary, reprimand, or a civil penalty not exceeding \$10,000. [s. 112.317, F.S.]

WHO MUST FILE FORM 1:

1) Elected public officials not serving in a political subdivision of the state and any person appointed to fill a vacancy in such office, unless required to file full disclosure on Form 6.

2) Appointed members of each board, commission, authority, or council having statewide jurisdiction, excluding members of solely advisory bodies, but including judicial nominating commission members; Directors of Enterprise Florida, Scripps Florida Funding Corporation, and Career Source Florida; and members of the Council on the Social Status of Black Men and Boys; the Executive Director, Governors, and senior managers of Citizens Property Insurance Corporation; Governors and senior managers of Florida Workers' Compensation Joint Underwriting Association; board members of the Northeast Fla. Regional Transportation Commission; board members of Triumph Gulf Coast, Inc; board members of Florida Is For Veterans, Inc.; and members of the Technology Advisory Council within the Agency for State Technology.

3) The Commissioner of Education, members of the State Board of Education, the Board of Governors, the local Boards of Trustees and Presidents of state universities, and the Florida Prepaid College Board.

4) Persons elected to office in any political subdivision (such as municipalities, counties, and special districts) and any person appointed to fill a vacancy in such office, unless required to file Form 6.

5) Appointed members of the following boards, councils, commissions, authorities, or other bodies of county, municipality, school district, independent special district, or other political subdivision: the governing body of the subdivision; community college or junior college district boards of trustees; boards having the power to enforce local code provisions; boards of adjustment; community redevelopment agencies; planning or zoning boards having the power to recommend, create, or modify land planning or zoning within a political subdivision, except for citizen advisory committees, technical coordinating committees, and similar groups who only have the power to make recommendations to planning or zoning boards, and except for representatives of a military installation acting on behalf of all military installations within that jurisdiction; pension or retirement boards empowered to invest pension or retirement funds or determine entitlement to or amount of pensions or other retirement benefits.

6) Any appointed member of a local government board who is required to file a statement of financial interests by the appointing authority or the enabling legislation, ordinance, or resolution creating the board.

7) Persons holding any of these positions in local government: mayor; county or city manager; chief administrative employee or finance

director of a county, municipality, or other political subdivision; county or municipal attorney; chief county or municipal building inspector; county or municipal water resources coordinator; county or municipal pollution control director; county or municipal environmental control director; county or municipal administrator with power to grant or deny a land development permit; chief of police; fire chief; municipal clerk; appointed district school superintendent; community college president; district medical examiner; purchasing agent (regardless of title) having the authority to make any purchase exceeding \$20,000 for the local governmental unit.

8) Officers and employees of entities serving as chief administrative officer of a political subdivision.

9) Members of governing boards of charter schools operated by a city or other public entity.

10) Employees in the office of the Governor or of a Cabinet member who are exempt from the Career Service System, excluding secretarial, clerical, and similar positions.

11) The following positions in each state department, commission, board, or council: Secretary, Assistant or Deputy Secretary, Executive Director, Assistant or Deputy Executive Director, and anyone having the power normally conferred upon such persons, regardless of title.

12) The following positions in each state department or division: Director, Assistant or Deputy Director, Bureau Chief, Assistant Bureau Chief, and any person having the power normally conferred upon such persons, regardless of title.

13) Assistant State Attorneys, Assistant Public Defenders, criminal conflict and civil regional counsel, and assistant criminal conflict and civil regional counsel, Public Counsel, full-time state employees serving as counsel or assistant counsel to a state agency, administrative law judges, and hearing officers.

14) The Superintendent or Director of a state mental health institute established for training and research in the mental health field, or any major state institution or facility established for corrections, training, treatment, or rehabilitation.

15) State agency Business Managers, Finance and Accounting Directors, Personnel Officers, Grant Coordinators, and purchasing agents (regardless of title) with power to make a purchase exceeding \$20,000.

16) The following positions in legislative branch agencies: each employee (other than those employed in maintenance, clerical, secretarial, or similar positions and legislative assistants exempted by the presiding officer of their house); and each employee of the Commission on Ethics.

INSTRUCTIONS FOR COMPLETING FORM 1:

INTRODUCTORY INFORMATION (Top of Form): If your name, mailing address, public agency, and position are already printed on the form, you do not need to provide this information unless it should be changed. To change any of this information, write the correct information on the form, and contact your agency's financial disclosure coordinator. You can find your coordinator on the Commission on Ethics website: www.ethics.state.fl.us.

NAME OF AGENCY: The name of the governmental unit which you serve or served, by which you are or were employed, or for which you are a candidate.

OFFICE OR POSITION HELD OR SOUGHT: The title of the office or position you hold, are seeking, or held during the disclosure period even if you have since left that position. If you are a candidate for office or are a new employee or appointee, check the appropriate box.

PUBLIC RECORD: The disclosure form and everything attached to it is a public record. Your Social Security Number is not required and you should redact it from any documents you file. If you are an active or former officer or employee listed in Section 119.071, F.S., whose home address is exempt from disclosure, the Commission will maintain that confidentiality if you submit a written request.

DISCLOSURE PERIOD: The tax year for most individuals is the calendar year (January 1 through December 31). If that is the case for you, then your financial interests should be reported for the calendar year 2017; check that box. If you file your IRS tax return based on a tax year that is not the calendar year, you should specify the dates of your tax year in this portion of the form and check the appropriate box. This is the "disclosure period" for your report.

MANNER OF CALCULATING REPORTABLE INTEREST

Filers have the option of reporting based on either thresholds that are comparative (usually, based on percentage values) or thresholds that are based on absolute dollar values. The instructions on the following pages specifically describe the different thresholds. Check the box that reflects the choice you have made. You must use the type of threshold you have chosen for each part of the form. In other words, if you choose to report based on absolute dollar value thresholds, you cannot use a percentage threshold on any part of the form.

IF YOU HAVE CHOSEN DOLLAR VALUE THRESHOLDS THE FOLLOWING INSTRUCTIONS APPLY

PART A — PRIMARY SOURCES OF INCOME

[Required by s. 112.3145(3)(b)1, F.S.]

Part A is intended to require the disclosure of your principal sources of income during the disclosure period. You do not have to disclose the amount of income received, and you need not list your public salary from serving in the position(s) which requires you to file this form. The income of your spouse need not be disclosed; however, if there is joint income to you and your spouse from property you own jointly (such as interest or dividends from a bank account or stocks), you should disclose the source of that income if it exceeded the threshold.

Please list in this part of the form the name, address, and principal business activity of each source of your income which exceeded \$2,500 of gross income received by you in your own name or by any other person for your use or benefit.

"Gross income" means the same as it does for income tax purposes, even if the income is not actually taxable, such as interest on tax-free bonds. Examples include: compensation for services, income from business, gains from property dealings, interest, rents, dividends, pensions, IRA distributions, social security, distributive share of partnership gross income, and alimony, but not child support.

Examples:

- If you were employed by a company that manufactures computers and received more than \$2,500, list the name of the company, its address, and its principal business activity (computer manufacturing).
- If you were a partner in a law firm and your distributive share of partnership gross income exceeded \$2,500, list the name of the firm, its address, and its principal business activity (practice of law).
- If you were the sole proprietor of a retail gift business and your gross income from the business exceeded \$2,500, list the name of the business, its address, and its principal business activity (retail gift sales).
- If you received income from investments in stocks and bonds, list each individual company from which you derived more than \$2,500. Do not aggregate all of your investment income.
- If more than \$2,500 of your gross income was gain from the sale of property (not just the selling price), list as a source of income the purchaser's name, address and principal business activity. If the purchaser's identity is unknown, such as where securities listed on an exchange are sold through a brokerage firm, the source of income should be listed as "sale of (name of company) stock," for example.
- If more than \$2,500 of your gross income was in the form of interest from one particular financial institution (aggregating interest from all CD's, accounts, etc., at that institution), list the name of the institution, its address, and its principal business activity.

PART B — SECONDARY SOURCES OF INCOME

[Required by s. 112.3145(3)(b)2, F.S.]

This part is intended to require the disclosure of major customers, clients, and other sources of income to businesses in which you own an interest. It is not for reporting income from second jobs. That kind of income should be reported in Part A "Primary Sources of Income," if it meets the reporting threshold. You will not have anything to report unless, during the disclosure period:

- (1) You owned (either directly or indirectly in the form of an equitable or beneficial interest) more than 5% of the total assets or capital stock of

a business entity (a corporation, partnership, LLC, limited partnership, proprietorship, joint venture, trust, firm, etc., doing business in Florida); **and,**

- (2) You received more than \$5,000 of your gross income during the disclosure period from that business entity.

If your interests and gross income exceeded these thresholds, then for that business entity you must list every source of income to the business entity which exceeded 10% of the business entity's gross income (computed on the basis of the business entity's most recently completed fiscal year), the source's address, and the source's principal business activity.

Examples:

- You are the sole proprietor of a dry cleaning business, from which you received more than \$5,000. If only one customer, a uniform rental company, provided more than 10% of your dry cleaning business, you must list the name of the uniform rental company, its address, and its principal business activity (uniform rentals).
- You are a 20% partner in a partnership that owns a shopping mall and your partnership income exceeded the above thresholds. List each tenant of the mall that provided more than 10% of the partnership's gross income and the tenant's address and principal business activity.

PART C — REAL PROPERTY

[Required by s. 112.3145(3)(b)3, F.S.]

In this part, list the location or description of all real property in Florida in which you owned directly or indirectly at any time during the disclosure period in excess of 5% of the property's value. You are not required to list your residences. You should list any vacation homes if you derive income from them.

Indirect ownership includes situations where you are a beneficiary of a trust that owns the property, as well as situations where you own more than 5% of a partnership or corporation that owns the property. The value of the property may be determined by the most recently assessed value for tax purposes, in the absence of a more current appraisal.

The location or description of the property should be sufficient to enable anyone who looks at the form to identify the property. A street address should be used, if one exists.

PART D — INTANGIBLE PERSONAL PROPERTY

[Required by s. 112.3145(3)(b)3, F.S.]

Describe any intangible personal property that, at any time during the disclosure period, was worth more than \$10,000 and state the business entity to which the property related. Intangible personal property includes things such as cash on hand, stocks, bonds, certificates of deposit, vehicle leases, interests in businesses, beneficial interests in trusts, money owed you, Deferred Retirement Option Program (DROPP) accounts, the Florida Prepaid College Plan, and bank accounts. Intangible personal property also includes investment products held in IRAs, brokerage accounts, and the Florida College Investment Plan. Note that the product contained in a brokerage account, IRA, or the Florida College Investment Plan is your asset—not the account or plan itself. Things like automobiles and houses you own, jewelry, and paintings are not intangible property. Intangibles relating to the same business entity may be aggregated; for example, CDs and savings accounts with the same bank. Property owned as tenants by the entirety or as joint tenants with right of survivorship should be valued at 100%. The value of a leased vehicle is the vehicle's present value minus the lease residual (a number found on the lease document).

PART E — LIABILITIES

[Required by s. 112.3145(3)(b)4, F.S.]

List the name and address of each creditor to whom you owed more than \$10,000 at any time during the disclosure period. The amount of the liability of a vehicle lease is the sum of any past-due payments and all unpaid prospective lease payments. You are not required to list the amount of any debt. You do not have to disclose credit card and retail installment accounts, taxes owed (unless reduced to a judgment), indebtedness on a life insurance policy owed to the company of issuance, or contingent liabilities. A "contingent liability" is one that will become an actual liability only when one or more future events occur or fail to occur, such as where you are liable only as a guarantor, surety, or endorser on a promissory note. If you are a "co-maker" and are jointly liable or jointly and severally liable, then it is not a contingent liability.

PART F — INTERESTS IN SPECIFIED BUSINESSES

[Required by s. 112.3145(5), F.S.]

The types of businesses covered in this disclosure include: state and federally chartered banks; state and federal savings and loan associations; cemetery companies; insurance companies; mortgage companies; credit unions; small loan companies; alcoholic beverage licensees; pari-mutuel wagering companies; utility companies, entities controlled by the Public Service Commission; and entities granted a franchise to operate by either a city or a county government.

Disclose in this part the fact that you owned during the disclosure period an interest in, or held any of certain positions with the types of businesses listed above. You must make this disclosure if you own or owned (either directly or indirectly in the form of an equitable or beneficial interest) at any time during the disclosure period more than 5% of the total assets or capital stock of one of the types of business entities listed above. You also must complete this part of the form for each of these types of businesses for which you are, or were at any time during the disclosure period, an officer, director, partner, proprietor, or agent (other than a resident agent solely for service of process).

If you have or held such a position or ownership interest in one of these types of businesses, list the name of the business, its address and principal business activity, and the position held with the business (if any). If you own(ed) more than a 5% interest in the business, indicate that fact and describe the nature of your interest.

PART G — TRAINING CERTIFICATION

[Required by s. 112.3142, F.S.]

If you are a Constitutional or elected municipal officer whose service began before March 31 of the year for which you are filing, you are required to complete four hours of ethics training which addresses Article II, Section 8 of the Florida Constitution, the Code of Ethics for Public Officers and Employees, and the public records and open meetings laws of the state. You are required to certify on this form that you have taken such training.

(End of Dollar Value Thresholds Instructions.)

IF YOU HAVE CHOSEN COMPARATIVE (PERCENTAGE) THRESHOLDS THE FOLLOWING INSTRUCTIONS APPLY

PART A — PRIMARY SOURCES OF INCOME

[Required by s. 112.3145(3)(a)1, F.S.]

Part A is intended to require the disclosure of your principal sources of income during the disclosure period. You do not have to disclose the amount of income received, and you need not list your public salary received from serving in the position(s) which requires you to file this form, but this amount should be included when calculating your gross income for the disclosure period. The income of your spouse need not be disclosed; however, if there is joint income to you and your spouse from property you own jointly (such as interest or dividends from a bank account or stocks), you should include all of that income when calculating your gross income and disclose the source of that income if it exceeded the threshold.

Please list in this part of the form the name, address, and principal business activity of each source of your income which exceeded 5% of the gross income received by you in your own name or by any other person for your benefit or use during the disclosure period.

"Gross income" means the same as it does for income tax purposes, even if the income is not actually taxable, such as interest on tax-free bonds. Examples include: compensation for services, income from business, gains from property dealings, interest, rents, dividends, pensions, IRA distributions, social security, distributive share of partnership gross income, and alimony, but not child support.

Examples:

— If you were employed by a company that manufactures computers and received more than 5% of your gross income from the company, list the name of the company, its address, and its principal business activity (computer manufacturing).

— If you were a partner in a law firm and your distributive share of partnership gross income exceeded 5% of your gross income, then list the name of the firm, its address, and its principal business activity (practice of law).

— If you were the sole proprietor of a retail gift business and your gross income from the business exceeded 5% of your total gross income, list the name of the business, its address, and its principal business activity (retail gift sales).

— If you received income from investments in stocks and bonds, list each individual company from which you derived

more than 5% of your gross income. Do not aggregate all of your investment income.

— If more than 5% of your gross income was gain from the sale of property (not just the selling price), list as a source of income the purchaser's name, address, and principal business activity. If the purchaser's identity is unknown, such as where securities listed on an exchange are sold through a brokerage firm, the source of income should be listed as "sale of (name of company) stock," for example.

— If more than 5% of your gross income was in the form of interest from one particular financial institution (aggregating interest from all CD's, accounts, etc., at that institution), list the name of the institution, its address, and its principal business activity.

PART B — SECONDARY SOURCES OF INCOME

[Required by s. 112.3145(3)(a)2, F.S.]

This part is intended to require the disclosure of major customers, clients, and other sources of income to businesses in which you own an interest. It is not for reporting income from second jobs. That kind of income should be reported in Part A, "Primary Sources of Income," if it meets the reporting threshold. You will **not** have anything to report **unless** during the disclosure period:

(1) You owned (either directly or indirectly in the form of an equitable or beneficial interest) more than 5% of the total assets or capital stock of a business entity (a corporation, partnership, LLC, limited partnership, proprietorship, joint venture, trust, firm, etc., doing business in Florida); **and**,

(2) You received more than 10% of your gross income from that business entity; **and**,

(3) You received more than \$1,500 in gross income from that business entity.

If your interests and gross income exceeded these thresholds, then for that business entity you must list every source of income to the business entity which exceeded 10% of the business entity's gross income (computed on the basis of the business entity's most recently completed fiscal year), the source's address, and the source's principal business activity.

Examples:

— You are the sole proprietor of a dry cleaning business, from which you received more than 10% of your gross income—an amount that was more than \$1,500. If only one customer, a uniform rental company, provided more than 10% of your dry cleaning business, you must list the name of the uniform rental company, its address, and its principal business activity (uniform rentals).

— You are a 20% partner in a partnership that owns a shopping mall and your partnership income exceeded the thresholds listed above. You should list each tenant of the mall that provided more than 10% of the partnership's gross income, and the tenant's address and principal business activity.

PART C — REAL PROPERTY

[Required by s. 112.3145(3)(a)3, F.S.]

In this part, list the location or description of all real property in Florida in which you owned directly or indirectly at any time during the disclosure period in excess of 5% of the property's value. You are not required to list your residences. You should list any vacation homes, if you derive income from them.

Indirect ownership includes situations where you are a beneficiary of a trust that owns the property, as well as situations where you own more than 5% of a partnership or corporation that owns the property. The value of the property may be determined by the most recently assessed value for tax purposes, in the absence of a more current appraisal.

The location or description of the property should be sufficient to enable anyone who looks at the form to identify the property. A street address should be used, if one exists.

PART D — INTANGIBLE PERSONAL PROPERTY

[Required by s. 112.3145(3)(a)3, F.S.]

Describe any intangible personal property that, at any time during the disclosure period, was worth more than 10% of your total assets, and state the business entity to which the property related. Intangible personal property includes things such as cash on hand, stocks, bonds, certificates of deposit, vehicle leases, interests in businesses, beneficial interests in trusts, money owed you, Deferred Retirement Option Program (DROP) accounts, the Florida Prepaid College Plan, and bank accounts. Intangible personal property also includes investment products held in IRAs, brokerage accounts, and the Florida College Investment Plan. Note that the product contained in a brokerage account, IRA, or the Florida College Investment Plan is your asset—not the account or plan itself. Things like automobiles and houses you own, jewelry, and paintings are not intangible property. Intangibles relating to the same business entity may be aggregated; for example, CD's and savings accounts with the same bank.

Calculations: To determine whether the intangible property exceeds 10% of your total assets, total the fair market value of all of your assets (including real property, intangible property, and tangible personal property such as jewelry, furniture, etc.). When making this calculation, do not subtract any liabilities (debts) that may relate to the property. Multiply the total figure by 10% to arrive at the disclosure threshold. List only the intangibles that exceed this threshold amount. The value of a leased vehicle is the vehicle's present value minus the lease residual (a number which can be found on the lease document). Property that is only jointly owned property should be valued according to the percentage of your joint ownership. Property owned as tenants by the entirety or as joint tenants with right of survivorship should be valued at 100%. None of your calculations or the value of the property have to be disclosed on the form.

Example: You own 50% of the stock of a small corporation that is worth \$100,000, the estimated fair market value of your home and other property (bank accounts, automobile, furniture, etc.) is \$200,000. As your total assets are worth \$250,000, you must disclose intangibles worth over \$25,000. Since the value of the stock exceeds this threshold, you should list "stock" and the name of the corporation. If your accounts with a particular bank exceed \$25,000, you should list "bank accounts" and bank's name.

PART E — LIABILITIES

[Required by s. 112.3145(3)(b)4, F.S.]

List the name and address of each creditor to whom you owed any amount that, at any time during the disclosure period, exceeded your net worth. You are not required to list the amount of any debt or your net worth. You do not have to disclose: credit card and retail installment accounts, taxes owed (unless reduced to a judgment), indebtedness on a life insurance policy owed to the company of issuance, or contingent liabilities. A "contingent liability" is one that will become an actual liability only when one or more future events occur or fail to occur, such as where you are liable only as a guarantor, surety, or endorser on a promissory note. If you are a "co-maker" and are jointly liable or jointly and severally liable, it is not a contingent liability.

Calculations: To determine whether the debt exceeds your net worth, total all of your liabilities (including promissory notes, mortgages, credit card debts, judgments against you, etc.). The amount of the liability of a vehicle lease is the sum of any past-due payments and all unpaid prospective lease payments. Subtract the sum total of your liabilities from the value of all your assets as calculated above for Part D. This is your "net worth." List each creditor to whom your debt exceeded this amount unless it is one of the types of indebtedness listed in the paragraph above (credit card and retail installment accounts, etc.). Joint liabilities with others for which you are "jointly and severally liable," meaning that you may be liable for either your part or the whole of the obligation, should be included in your calculations at 100% of the amount owed.

Example: You owe \$15,000 to a bank for student loans, \$5,000 for credit card debts, and \$60,000 (with spouse) to a savings and loan for a home mortgage. Your home (owned by you and your spouse) is worth \$80,000 and your other property is worth \$20,000. Since your net worth is \$20,000 (\$100,000 minus \$80,000), you must report only the name and address of the savings and loan.

PART F — INTERESTS IN SPECIFIED BUSINESSES

[Required by s. 112.3145, F.S.]

The types of businesses covered in this disclosure include: state and federally chartered banks; state and federal savings and loan associations; cemetery companies; insurance companies; mortgage companies; credit unions; small loan companies; alcoholic beverage licensees; pari-mutuel wagering companies; utility companies, entities controlled by the Public Service Commission; and entities granted a franchise to operate by either a city or a county government.

Disclose in this part the fact that you owned during the disclosure period an interest in, or held any of certain positions with, the types of businesses listed above. You are required to make this disclosure if you own or owned (either directly or indirectly in the form of an equitable or beneficial interest) at any time during the disclosure period more than 5% of the total assets or capital stock of one of the types of business entities listed above. You also must complete this part of the form for each of these types of businesses for which you are, or were at any time during the disclosure period, an officer, director, partner, proprietor, or agent (other than a resident agent solely for service of process).

If you have or held such a position or ownership interest in one of these types of businesses, list the name of the business, its address and principal business activity, and the position held with the business (if any). If you own(ed) more than a 5% interest in the business, indicate that fact and describe the nature of your interest.

PART G — TRAINING CERTIFICATION

[Required by s. 112.3142, F.S.]

If you are a Constitutional or elected municipal officer whose service began before March 31 of the year for which you are filing, you are required to complete four hours of ethics training which addresses Article II, Section 8 of the Florida Constitution, the Code of Ethics for Public Officers and Employees, and the public records and open meetings laws of the state. You are required to certify on this form that you have taken such training.

(End of Percentage Thresholds Instructions.)

EXHIBIT 5.

RESOLUTION 2018-06

A RESOLUTION RE-DESIGNATING OFFICERS OF THE
PANTHER TRACE II COMMUNITY DEVELOPMENT
DISTRICT

WHEREAS, the Board of Supervisors of the Panther Trace II Community Development District at the business meeting held on May 21, 2018 desires to appoint the below recited persons to the offices specified.

NOW, THEREFORE, BE IT RESOLVED BY THE BOARD OF
SUPERVISORS OF PANTHER TRACE II COMMUNITY
DEVELOPMENT DISTRICT:

1. The following persons were appointed to the offices shown, to wit:

<u>Anthony Cunha</u>	Chairman
<u>Jeffrey Spiess</u>	Vice Chairman
<u>Rebecca Rivas</u>	Secretary
<u>Patricia Comings-Thibault</u>	Treasurer
<u>Maik Aagaard</u>	Assistant Treasurer
<u>Janet Johns</u>	Assistant Secretary
<u>Pamela Wood</u>	Assistant Secretary
<u>Scott Ward</u>	Assistant Secretary
_____	Assistant Secretary

2. That this resolution supersedes all previous resolutions and motions designating, electing or appointing officers adopted by the Board of Supervisors of the Panther Trace II Community Development District and are hereby declared null and void.

Adopted this ____ day of ____, 2018.

Chairman

Secretary

EXHIBIT 6.

FOURTH ORDER OF BUSINESS – Administrative Matters

A. Consideration and Approval of Minutes of the March 26, 2018 Meeting

On a MOTION by Mr. Ward, SECONDED by Mr. Cunha, WITH ALL IN FAVOR, the Board approved the **March 26, 2018 Minutes** for the Panther Trace II Community Development District.

B. Acceptance of the Unaudited February 2018 Financials Statements

On a MOTION by Mr. Spiess, SECONDED by Mr. Cunha, WITH ALL IN FAVOR, the Board approved the **Unaudited February 2018 Financials Statements** for the Panther Trace II Community Development District.

C. Acceptance of the Operations & Maintenance Expenditures February 2018

On a MOTION by Mr. Cunha, SECONDED by Mr. Spiess, WITH ALL IN FAVOR, the Board approved the **Operations & Maintenance Expenditures February 2018** for the Panther Trace II Community Development District.

D. Reserve Expenditure Allocation for Pool Filters

On a MOTION by Mr. Spiess, SECONDED by Mr. Ward, WITH ALL IN FAVOR, the Board approved **paying the pool filter expense out of the Operations and Maintenance Reserves** for the Panther Trace II Community Development District.

FIFTH ORDER OF BUSINESS – Business Matters

A. Rick Hewitt – Board of Supervisor Seat 2 Resignation

On a MOTION by Mr. Spiess, SECONDED by Mr. Cunha, WITH ALL IN FAVOR, the Board accepted the **resignation letter for Mr. Rick Hewitt on the Board of Supervisors Seat #2** for the Panther Trace II Community Development District.

B. Consideration and Adoption of 2018-04 General Election

On a MOTION by Mr. Cunha, SECONDED by Mr. Spiess, WITH ALL IN FAVOR, the Board adopted the **2018-04 General Election** for the Panther Trace II Community Development District.

C. Consideration and Adoption of 2018-05 Adoption the FY 2018-2019 Proposed Budget

Supervisor Cunha made the suggestion to increase the Landscape Maintenance Other line item, increase the Security line item, and an 8% increase in assessment with a focus on landscaping. Ms. Rivas will input the suggestions and send an email to the Board for consideration and adoption at the next meeting.

D. Landscape RFP

Ms. Rivas will send an email with a digital copy to the Board.

78

79 **SIXTH ORDER OF BUSINESS – Staff Reports**

80 **A. District Manager**

81 ➤ **Water Usage Update**

82 Ms. Rivas notified the Board that she is monitoring the water usage on a weekly
83 basis and will provide an update on the water usage at the next meeting.

84 ➤ **Rescheduling May 28, 2018 BOS meeting due to Memorial Day to May 21,**
85 **2018.**

86 On a MOTION by Mr. Ward, SECONDED by Ms. Wood, WITH ALL IN FAVOR, the Board
87 approved **rescheduling the May 28, 2018 BOS meeting to May 21, 2018 due to the Memorial**
88 **Day Holiday** for the Panther Trace II Community Development District.

89 **B. District Counsel**

90 **C. District Engineer**

91 **D. Amenity Manager March 2018 Operations Report**

92 Ms. Ramirez presents the March 2018 Operations Report.

93 ➤ The spinning class is permitted to come in one extra week on a Wednesday night.

94 ➤ Cypress Creek Produce is permitted to come in the evening from 6:30 PM until
95 8:00 PM.

96 **SEVENTH ORDER OF BUSINESS – Public Comments**

97 There being none, next item followed.

98 **EIGHTH ORDER OF BUSINESS – Supervisors Requests**

99 **A. Supervisor Ward provided an update on Batting Cages & Proposals**

100 Supervisor Ward recommended having Yellowstone inspect the irrigation in that area.

101 Ms. Rivas is to contact the county about permit requirements and cost, contact

102 Yellowstone to check the irrigation in the area where the batting cages will be installed

103 and contact the insurance company about their policy and cost to include the batting
104 cages.

105 **NINTH ORDER OF BUSINESS – Audience Comments – New Business**

106 There being none, next item followed.

107 **TENTH ORDER OF BUSINESS – Adjournment**

108 On a MOTION by Mr. Spiess, SECONDED by Mr. Ward, WITH ALL IN FAVOR, the Board
109 adjourned the meeting for the Panther Trace II Community Development District.

110

**Each person who decides to appeal any decision made by the Board with respect to any matter considered at the meeting is advised that person may need to ensure that a verbatim record of the proceedings is made, including the testimony and evidence upon which such appeal is to be based.*

Meeting minutes were approved at a meeting by vote of the Board of Supervisors at a publicly noticed meeting held on _____.

Signature

Signature

Printed Name

Printed Name

Title: ☐ **Secretary** ☐ **Assistant Secretary**

Title: ☐ **Chairman** ☐ **Vice Chairman**

EXHIBIT 7.

Panther Trace II
Community Development District

Financial Statements
(Unaudited)

April 30, 2018

Panther Trace II CDD
Balance Sheet
April 30, 2018

	GENERAL FUND	SERIES 2014 DEBT SERVICE	TOTAL
<u>ASSETS:</u>			
CASH - OPERATING ACCOUNT	\$ 40,895	\$ -	\$ 40,895
PETTY CASH	100	-	100
CASH - DEBIT CARD	2,000	-	2,000
INVESTMENTS:			
MONEY MARKET ACCOUNT	974,841	-	974,841
REVENUE TRUST	-	911,336	911,336
RESERVE CASH TRUST	-	327,553	327,553
REDEMPTION - PREPAYMENT TRUST	-	31	31
ACCOUNTS RECEIVABLE	240	-	240
ASSESSMENTS RECEIVABLE (TAX ROLL)	-	-	-
DUE FROM GF	-	-	-
PREPAID EXPENSES	100	-	100
DEPOSITS	2,065	-	2,065
TOTAL ASSETS	<u>\$ 1,020,241</u>	<u>\$ 1,238,920</u>	<u>\$ 2,259,161</u>
<u>LIABILITIES:</u>			
ACCOUNTS PAYABLE	\$ 65,083	\$ -	\$ 65,083
ACCRUED EXPENSES	-	-	-
DUE TO DEVELOPER	17,959	-	17,959
DEFERRED REVENUE (TAX ROLL)	-	-	-
RENTAL DEPOSITS	-	-	-
DUE TO OTHER FUNDS	-	-	-
<u>FUND BALANCE:</u>			
NONSPENDABLE:			
PREPAID AND DEPOSITS	2,332	-	2,332
ASSIGNED:			
THREE MONTH OPERATING RESERVE	210,878	-	210,878
FY16 RESERVE FOR R&R	35,520	-	35,520
FY17 RESERVE FOR R&R	40,900	-	40,900
FY18 RESERVE FOR R&R	41,200	-	41,200
RESTRICTED FOR:			
DEBT SERVICE	-	1,238,920	1,238,920
UNASSIGNED:	606,369	-	606,369
TOTAL LIABILITIES & FUND BALANCE	<u>\$ 1,020,241</u>	<u>\$ 1,238,920</u>	<u>\$ 2,259,161</u>

Panther Trace II CDD
General Fund
Statement of Revenue, Expenditures and Changes in Fund Balance
For the Period from October 1, 2017 to April 30, 2018

	FY2018 ADOPTED BUDGET	BUDGET YEAR-TO-DATE	ACTUAL YEAR-TO-DATE	VARIANCE FAVORABLE (UNFAVORABLE)
REVENUES				
ASSESSMENTS - ON ROLL (BUDGETED NET)	\$ 840,213	\$ 840,213	\$ 852,296 (a)	\$ 12,083
INTEREST REVENUE	300	175	2,760	2,585
RENTAL REVENUE	3,000	1,750	3,014	1,264
MISCELLANEOUS REVENUE (ACCESS KEYS & OTHER)	-	-	2,232	2,232
FUND BALANCE FORWARD (RESERVE CONTRIBUTIONS)	-	-	-	-
DISCOUNT	-	-	-	-
TOTAL REVENUES	843,513	842,138	860,302	18,164
EXPENDITURES				
BOARD OF SUPERVISORS PAYROLL	12,000	7,000	3,800	3,200
PAYROLL TAXES	918	536	291	245
TRAVEL PER DIEM	250	146	-	146
MANAGEMENT CONSULTING SERVICES	48,000	28,000	28,000	-
OFFICE SUPPLIES	150	88	169	(82)
BANK FEES	200	117	111	6
MISC. ADMIN. EXPENSE	-	-	-	-
MASS MAILING	2,000	1,167	-	1,167
AUDITING	4,200	2,450	-	2,450
COUNTY - ASSESSMENT COLLECTION FEES (4%)	-	-	-	-
REGULATORY AND PERMIT FEES	175	175	175	-
LEGAL ADVERTISEMENTS	1,000	583	348	235
ENGINEERING SERVICES	6,000	3,500	1,210	2,290
LEGAL SERVICES	25,000	14,583	3,154	11,429
WEBSITE ADMINISTRATION	180	105	106	(1)
PROPERTY TAX & ADMIN	-	-	-	-
TOTAL ADMINISTRATIVE	100,073	58,449	37,364	21,085
INSURANCE				
INSURANCE (PUBLIC OFFICIALS)	-	-	-	-
INSURANCE (LIABILITY, PROPERTY & CASUALTY; BOND)	12,059	12,059	11,616	443
TOTAL INSURANCE	12,059	12,059	11,616	443
DEBT SERVICE ADMINISTRATION				
DISSEMINATION AGENT - BONDS	2,000	1,000	1,000	-
ARBITRAGE REBATE	650	650	650	-
TRUSTEE FEES	5,084	5,084	5,084	-
TOTAL DEBT SERVICE ADMINISTRATION	7,734	6,734	6,734	-
SECURITY:				
SECURITY SYSTEM - (ENVERA CONTRACT)	6,168	4,626	4,626	-
SECURITY MONITORING - (EMG)	440	257	268	(11)
SECURITY PATROL - (CBM)	34,200	19,950	9,976	9,974
SECURITY SYSTEM - MAINTENANCE & IMP.	1,200	700	990	(290)
TOTAL SECURITY	42,008	25,533	15,860	9,673
PHYSICAL ENVIRONMENT EXPENSES:				
ELECTRICITY	168,000	98,000	97,326	674
STREETLIGHTING LEASE	24,000	14,000	13,326	674
WATER	15,000	8,750	24,596 (b)	(15,846)
SOLID WASTE DISPOSAL	1,750	1,021	898	123
PEST CONTROL	400	233	200	33
COMMUNICATIONS (TEL, INTERNET, TECH, ETC)	2,184	1,274	1,280	(6)
FACILITY MAINTENANCE	3,000	1,750	-	1,750
WATERWAY MANAGEMENT PROGRAM - CONTRACT	19,020	11,095	11,095	-
WATERWAY MANAGEMENT PROGRAM - OTHER	2,000	2,000	9,249	(7,249)
ENTRY & WALLS MAINTENANCE	1,200	700	-	700
LANDSCAPE MAINTENANCE - CONTRACT	147,084	85,799	85,799	-
LANDSCAPE MAINTENANCE - OTHER	35,000	20,417	6,204	14,213
IRRIGATION MAINTENANCE	2,000	1,167	2,044	(877)
DECORATIVE LIGHTS & MAINTENANCE	7,500	7,500	4,478	3,022
SIGNAGE REPAIRS	1,200	700	-	700
PET WASTE REMOVAL	-	-	1,080	(1,080)
FIELD MISCELLANEOUS	2,500	2,500	5,640	(3,140)
TOTAL PHYSICAL ENVIRONMENT	431,838	256,906	263,215	(6,310)

Panther Trace II CDD
General Fund
Statement of Revenue, Expenditures and Changes in Fund Balance
For the Period from October 1, 2017 to April 30, 2018

	FY2018 ADOPTED BUDGET	BUDGET YEAR-TO-DATE	ACTUAL YEAR-TO-DATE	VARIANCE FAVORABLE (UNFAVORABLE)
CLUBHOUSE & AMENITY ADMINISTRATION:				
AMENITY CENTER MANAGEMENT	43,000	25,083	24,780	303
PAYROLL SERVICES FEE	1,300	758	890	(132)
FICA TAXES AMENITY EMPLOYEE - EMPLOYER PORTION	-	-	1,898	(1,898)
AMENITY MANAGEMENT (CELL PHONE & REIMB EXPENSES)	600	350	350	-
AMENITY CTR MAINTENANCE & IMPROVEMENTS	1,500	875	-	875
CLUBHOUSE FACILITY MAINTENANCE - CLEANING	3,900	2,275	2,815	(540)
CLUBHOUSE FACILITY MAINTENANCE - OTHER	12,000	7,000	2,367	4,633
POOL MAINTENANCE	23,900	13,942	11,200	2,742
POOL PERMITS	425	-	-	-
POOL MAINT & MONITORING - OTHER	9,500	5,542	2,294	3,248
CLUBHOUSE MISCELLANEOUS SUPPLIES	3,000	1,750	624	1,126
CLUBHOUSE MISCELLANEOUS EXPENSE	-	-	-	-
SPECIAL EVENTS	10,000	5,833	105	5,728
PLAYGROUND MAINTENANCE	3,000	1,750	-	1,750
CAPITAL OUTLAY	96,476	96,476	309,777 (c)	(213,301)
TOTAL	208,601	161,634	357,100	(195,466)
CAPITAL RESERVES:				
CAPITAL ASSET RESERVES	41,200	2,690	2,690	-
TOTAL CAPITAL RESERVES	41,200	2,690	2,690	-
TOTAL EXPENDITURES	843,513	524,004	694,579	(170,575)
EXCESS OF REVENUE OVER (UNDER) EXPENDITURES	-	318,134	165,723	(152,411)
NET CHANGE IN FUND BALANCE	-	318,134	165,723	(152,411)
FUND BALANCE - BEGINNING	699,717	699,717	771,477	771,477
INCREASE IN FUND BALANCE	41,200	-	-	-
FUND BALANCE - ENDING	\$ 740,917	\$ 1,017,851	\$ 937,200	\$ 619,066

a) Assessment budget reported at net and actual collections reported at net.

b) Splash pad and running toilets contributed to the increase in water usage from December – March. Repairs have been completed for both item and water is being tracked on a weekly basis to assure water levels have returned to normal.

c) Capital Outlay expense are over budget due to Landscape Project approved at 8/28/17 Board Meeting

Renewal & Replacement (Reserve)		
	FY 2016	\$ 145,600
	FY 2017	\$ 40,900
	FY 2018	\$ 41,200
	Total	\$ 227,700
	FY17 Pool Finish Per Reserve Study	\$ (100,000)
	FY17 Well Pumps per Reserve Study	\$ (10,080)
	FY 2018 Pool Filter Grid Replacement	\$ (2,690)
Total Reserve Balance After FY18 Reserve Component Exp.		\$ 114,930

Panther Trace II CDD
DS Fund - Series 2014
Statement of Revenue, Expenditures and Changes in Fund Balance
For the Period from October 1, 2017 to April 30, 2018

	BUDGET	BUDGET YEAR-TO-DATE	ACTUAL YEAR-TO-DATE	VARIANCE FAVORABLE (UNFAVORABLE)
REVENUE				
ASSESSMENTS - ON ROLL (GROSS)	\$ 890,088	\$ 818,880	\$ 829,510 ^(a)	\$ 10,630
INTEREST--INVESTMENT	-	-	3,784	3,784
DISCOUNT ASSESSMENTS	(35,604)	-	-	-
MISCELLANEOUSE INCOME	-	-	-	-
TOTAL REVENUE	854,484	818,880	833,294	14,414
EXPENDITURES				
COUNTY ASSESSMENT COLL FEES	35,604	-	-	-
INTEREST EXPENSE	377,956	-	-	-
PRINCIPAL RETIREMENT (MAY 1, 2018)	440,000	-	-	-
TOTAL EXPENDITURES	853,560	-	-	-
EXCESS OF REVENUE OVER (UNDER) EXPENDITURES	924	818,880	833,294	14,414
NET CHANGE IN FUND BALANCE	924	818,880	833,294	14,414
FUND BALANCE - BEGINNING	-	-	405,626	405,626
FUND BALANCE - ENDING	\$ 924	\$ 818,880	\$ 1,238,920	\$ 420,040

Note (A) - Assessments are budgeted at gross and YTD budget is reported at net of discount assessment and county assessment collection fees. Actual on roll is reported at net.

**Panther Trace II CDD
Cash Reconciliation
April 30, 2018**

		<i>Bank United</i>
		<i>(Operating Acct)</i>
		<hr/>
Balance Per Bank Statement	\$	42,163.71
Less: Outstanding Checks		(1,268.62)
		<hr/>
<i>Adjusted Bank Balance</i>	\$	40,895.09
		<hr/> <hr/>
Beginning Bank Balance Per Books	\$	56,853.85
Add: Cash Receipts		51,587.19
Less: Cash Disbursements		(67,545.95)
		<hr/>
<i>Balance Per Books</i>	\$	40,895.09
		<hr/> <hr/>

**Panther Trace II CDD
Cash Register - FY2018**

Date	Num	Name	Memo	Receipts	Disbursements	Balance
BALANCE 9-30-2017						31,780.84
10/01/2017	1260	DPFG MANAGEMENT & CONSULTING, LLC	CDD Mgmt - October		4,000.00	27,780.84
10/02/2017	1261	EGIS INSURANCE & RISK ADVISORS	Insurance FY 2018		11,616.00	16,164.84
10/02/2017	1262	ENVERA	10/1-12/31 - CCTV Monitoring		1,542.00	14,622.84
10/02/2017	1263	REPUBLIC SERVICES	10/1-10/31 - Solid Waste		107.51	14,515.33
10/06/2017	ACH10062017	Paychex	Payroll Fee		54.25	14,461.08
10/06/2017	10058DD	ANNA RAMIREZ	9/17-9/30 P/R		1,413.18	13,047.90
10/06/2017	10056DD	ANTHONY CUNHA	BOS Mtgs - 8/28 & 9/25/17		369.40	12,678.50
10/06/2017	10059	JEFFREY A. SPIESS	BOS Mtgs - 8/29 & 9/25/17		369.40	12,309.10
10/06/2017	ACH10062017	Paychex	9/17-9/30 P/R		555.02	11,754.08
10/06/2017	10057DD	RICHARD HEWETT	BOS Mtg - 9/25/17		184.70	11,569.38
10/06/2017	10060DD	Pamela S. Wood	BOS Mtgs - 6/28, 8/28 & 9/25/17		554.10	11,015.28
10/10/2017	1020	Panther Trace II.	Transfer to Operating	50,000.00		61,015.28
10/11/2017	1264	ALL PHASE PLUMBING SERVICES	Plumbing Repairs		2,450.00	58,565.28
10/11/2017	1265	BOCC	8/23-9/22 - 11518 Newgate Crest Dr		1,010.66	57,554.62
10/11/2017	1266	CBM SERVICES GROUP	9/25-10/1 - Security Guard		506.25	57,048.37
10/11/2017	1267	HOME TEAM PEST DEFENSE	Pest Control		100.50	56,947.87
10/11/2017	1268	STRALEY ROBIN VERICKER	Legal Svcs thru 9/15/17		192.50	56,755.37
10/11/2017	1269	TAMPA PUBLISHING COM	Legal Ad		382.50	56,372.87
10/12/2017	1270	TECO	Summary Bill - September		13,378.51	42,994.36
10/12/2017	1271	YELLOWSTONE LANDSCAPE	Landscape		12,407.00	30,587.36
10/12/2017	1272	ZEBRA CLEANING TEAM, INC.	Misc. Pool Maint		1,394.60	29,192.76
10/13/2017	1273	ZEBRA CLEANING TEAM, INC.	Pool Maint - September		1,900.00	27,292.76
10/13/2017		Panther Trace II.	Rentals/Misc	594.75		27,887.51
10/18/2017	1274	FLORIDA COURTS, INC.	Resurface Tennis Court (50%)		8,430.00	19,457.51
10/20/2017	1275	FLORIDA DEPARTMENT OF REVENUE	3rd Qtr Sales Tax 17		148.50	19,309.01
10/20/2017	1276	CBM SERVICES GROUP	10/2-10/8 - Security Guard		499.50	18,809.51
10/20/2017	1277	REMSON AQUATICS	Lake & Pond Maint - October		1,585.00	17,224.51
10/20/2017	ACH10202017	Paychex	P/R Fee		104.25	17,120.26
10/20/2017	10061DD	ANNA RAMIREZ	10/1-10/14 P/R		1,463.18	15,657.08
10/20/2017	ACH10202017	Paychex	10/1-10/14 P/R		309.22	15,347.86
10/24/2017		Panther Trace II.	Rental	25.00		15,372.86
10/27/2017	1278	S.F.C.G. CONTRACTING AND CONSTRUCTI	Holiday Lighting		4,477.50	10,895.36
10/27/2017	1279	ZEBRA CLEANING TEAM, INC.	Pool Maint - October		1,600.00	9,295.36
10/27/2017	1021	Panther Trace II.	Transfer to Operating	50,000.00		59,295.36
10/29/2017		Bank United	Interest	4.37		59,299.73
10/30/2017	1280	FLORIDA COURTS, INC.	Resurface Courts		9,740.00	49,559.73
10/30/2017	1281	JAYMAN ENTERPRISES, LLC	Hurricane Prep & Repairs		225.00	49,334.73
10/30/2017	1282	LANDSCAPE MAINTENANCE PROFESSIONALS, INC.	Mulch		3,960.00	45,374.73
BANK UNITED EOM BALANCE 10-31-2017				100,624.12	87,030.23	45,374.73
11/01/2017	1283	DPFG MANAGEMENT & CONSULTING, LLC	CDD Mgmt - November		4,000.00	41,374.73
11/03/2017	1284	CBM SERVICES GROUP	Security 10/9-10/22		813.38	40,561.35
11/03/2017	1285	REPUBLIC SERVICES	11/1-11/30 - Solid Waste		181.83	40,379.52
11/03/2017	1286	STRALEY ROBIN VERICKER	Legal Svcs thru 10/15/17		545.22	39,834.30
11/03/2017	1287	TECO	VOID:	0.00		39,834.30
11/03/2017	1288	TECO	9/17-10/16 - Streetlights		2,170.13	37,664.17
11/03/2017	ACH11032017	Paychex	P/R Fee		44.25	37,619.92
11/03/2017	10063DD	ANNA RAMIREZ	10/15-10/28/17 - P/R		1,540.59	36,079.33
11/03/2017	10062DD	ANTHONY CUNHA	BOS Mtg - 10/23/17		184.70	35,894.63
11/03/2017	10064	JEFFREY A. SPIESS	BOS Mtg - 10/23/17		184.70	35,709.93
11/03/2017	10065DD	Pamela S. Wood	BOS Mtg - 10/23/17		184.70	35,525.23
11/03/2017	ACH11032017	Paychex	10/15-10/28 - P/R & BOS Mtg		446.25	35,078.98
11/14/2017	1290	BOCC	9/23-10/22 - 11518 Newgate Crest Dr		1,980.40	33,098.58
11/14/2017	1291	CBM SERVICES GROUP	10/30-11/5 - Security Guard		364.50	32,734.08
11/14/2017	1292	EMG	12/1-2/28 - Monitoring		100.35	32,633.73
11/14/2017	1293	FLORIDA DEPT OF ECONOMIC OPPORTUNIT	Annual Filing - FY 2018		175.00	32,458.73
11/14/2017	1294	FRONTIER COMMUNICATIONS	11/1-11/30 - Internet/Phone		359.09	32,099.64
11/14/2017	1295	REMSON AQUATICS	Lake Maint - November		1,585.00	30,514.64
11/14/2017	1296	TECO	VOID: Summary Bill - October (stop payment & Reissu	0.00		30,514.64
11/14/2017	1297	US BANK	Trustee Fees Series 2014		5,083.65	25,430.99
11/14/2017	1298	VANGUARD CLEANING SYSTEMS OF TAMPA	CH Cleaning - November		325.00	25,105.99
11/14/2017	1299	YELLOWSTONE LANDSCAPE	Irrigation Repairs		289.50	24,816.49
11/14/2017	1022	Panther Trace II.	Transfer to operating	50,000.00		74,816.49
11/14/2017		TECO	VOID	0.00		74,816.49
11/17/2017	ACH11172017	Paychex	P/R Fee		44.25	74,772.24
11/17/2017	10067DD	ANNA RAMIREZ	10/29-11/11 - P/R		1,528.71	73,243.53
11/17/2017	10066DD	ANTHONY CUNHA	BOS Mtg - 12/4/17		184.70	73,058.83
11/17/2017	10068	JEFFREY A. SPIESS	BOS Mtg - 12/4/17		184.70	72,874.13
11/17/2017	10069DD	Pamela S. Wood	BOS Mtg - 12/4/17		184.70	72,689.43
11/17/2017	ACH11172017	Paychex	10/29-11/11 - P/R & BOS Mtg		422.01	72,267.42
11/20/2017	1300	YELLOWSTONE LANDSCAPE	Landscape & Pump Replacement		24,523.67	47,743.75
11/20/2017	1301	ZEBRA CLEANING TEAM, INC.	Pool Maint - November		1,600.00	46,143.75
11/22/2017	1302	CBM SERVICES GROUP	Security 11/6-11/19		499.50	45,644.25

**Panther Trace II CDD
Cash Register - FY2018**

Date	Num	Name	Memo	Receipts	Disbursements	Balance
11/22/2017	1303	HOME TEAM PEST DEFENSE	Pest Control - November		100.50	45,543.75
11/22/2017	1304	TAMPA PUBLISHING COM	Legal Ad		284.50	45,259.25
11/28/2017		TECO	VOID	0.00		45,259.25
11/28/2017	1305	CBM SERVICES GROUP	Security 11/13-11/26		610.13	44,649.12
11/28/2017	1306	JAYMAN ENTERPRISES, LLC	Misc. Repairs for Irrigation meter		150.00	44,499.12
11/28/2017	1307	REPUBLIC SERVICES	Solid Waste - December		121.83	44,377.29
11/28/2017	1308	STRALEY ROBIN VERICKER	Legal Svcs thru 11/15/17		247.50	44,129.79
11/28/2017	1309	TECO	10/17-11/13 - Streetlights		2,197.69	41,932.10
11/30/2017	ACH11302017	Paychex	P/R Fees		44.25	41,887.85
11/30/2017	10070DD	ANNA RAMIREZ	11/12-11/25/17 - P/R		1,608.65	40,279.20
11/30/2017	ACH11302017	Paychex	11/12-11/25/17 - P/R		380.73	39,898.47
11/30/2017		Bank United	Interest	6.35		39,904.82
BANK UNITED EOM BALANCE 11-30-2017				50,006.35	55,476.26	39,904.82
12/01/2017	1310	DPFG MANAGEMENT & CONSULTING, LLC	CDD Mgmt - December		4,000.00	35,904.82
12/11/2017		Panther Trace II.	Funds Transfer		275.00	35,629.82
12/13/2017		Panther Trace II.	Rentals/Misc	526.00		36,155.82
12/15/2017	1311	BOCC	10/23/11/20 - 11518 Newgaate Crest Dr		2,063.40	34,092.42
12/15/2017	1312	CBM SERVICES GROUP	11/27-12/3 - Security Guard		162.00	33,930.42
12/15/2017	1313	CLEAN SWEEP SUPPLY CO	Cleaning Supplies		133.80	33,796.62
12/15/2017	1314	FRONTIER COMMUNICATIONS	12/1-12/31 - Phone		173.74	33,622.88
12/15/2017	1315	JAYMAN ENTERPRISES, LLC	Clean up around dumpster		50.00	33,572.88
12/15/2017	1316	MHD COMMUNICATIONS	Replace Card Reader		470.00	33,102.88
12/15/2017	1317	REMSON AQUATICS	Lake & Pond Maint - December		1,585.00	31,517.88
12/15/2017	1318	TECO	VOID: Summary Bill - November	0.00		31,517.88
12/15/2017	1319	VANGUARD CLEANING SYSTEMS OF TAMPA	CH Cleaning - October & November		790.00	30,727.88
12/15/2017	1320	ZEBRA CLEANING TEAM, INC.	Pool Maint - December		1,600.00	29,127.88
12/15/2017	ACH12152017	Paychex	P/R Fees		44.25	29,083.63
12/15/2017	10071DD	ANNA RAMIREZ	11/26-12/9/17 - P/R		1,528.71	27,554.92
12/15/2017	ACH12152017	Paychex	11/26-12/9/17 - P/R		329.81	27,225.11
12/28/2017		Deluxe Bus Sys.	Checks		111.55	27,113.56
12/29/2017	1023	Panther Trace II.	Transfer to Operating	50,000.00		77,113.56
12/29/2017	ACH12292017	Paychex	P/R Fees		44.25	77,069.31
12/29/2017	10072DD	ANNA RAMIREZ	12/10-12/24/17 - P/R		1,933.54	75,135.77
12/29/2017	ACH12292017	Paychex	12/10-12/24/17 - P/R		507.97	74,627.80
12/31/2017		Bank United	Interest	4.45		74,632.25
BANK UNITED EOM BALANCE 12-31-2017				50,530.45	15,803.02	74,632.25
01/01/2018	1321	DPFG MANAGEMENT & CONSULTING, LLC	CDD Mgmt - January		4,000.00	70,632.25
01/02/2018	1322	CBM SERVICES GROUP	12/4-12/31 - Security Guard		1,231.88	69,400.37
01/02/2018	1323	ENVERA	1/1-3/31/18 - CCTV Monitoring		1,542.00	67,858.37
01/02/2018	1324	REPUBLIC SERVICES	1/1-1/31 - Solid Waste		121.83	67,736.54
01/02/2018	1325	STRALEY ROBIN VERICKER	Legal Svcs thru 12/15/17		422.92	67,313.62
01/02/2018	1326	TECO	11/14-12/13 - Streetlights		2,216.70	65,096.92
01/04/2018	1327	CBM SERVICES GROUP	12/25-12/31 - Security guard		459.00	64,637.92
01/04/2018	1328	CC MANATEE DEVELOPMENT, LLC	Water Credits		6,250.00	58,387.92
01/04/2018	1329	GHS ENVIRONMENTAL, LLC	RAI Responses		495.00	57,892.92
01/04/2018	1330	YELLOWSTONE LANDSCAPE	VOID:	0.00		57,892.92
01/04/2018	1331	YELLOWSTONE LANDSCAPE	Landscape Maint - December		12,257.00	45,635.92
01/11/2018		Panther Trace II	Rentals/Misc	806.25		46,442.17
01/11/2018		Panther Trace II	Transfer to Debit Card		235.00	46,207.17
01/12/2018	1332	BOCC	11/20-12/19 - 11518 Newgate Crest Dr		3,490.23	42,716.94
01/12/2018	1333	FRONTIER COMMUNICATIONS	1/1-1/31 - Phone		180.44	42,536.50
01/12/2018	1351	VANGUARD CLEANING SYSTEMS OF TAMPA	CH Cleaning - January		325.00	42,211.50
01/12/2018	ACH01122018	Paychex	P/R Fee		203.25	42,008.25
01/12/2018	10073DD	ANNA RAMIREZ	12/24-1/6 - P/R		1,918.55	40,089.70
01/12/2018	ACH01122018	Paychex	12/24-1/6 - P/R		482.53	39,607.17
01/15/2018	1334	-MULTIPLE-	Void - Damaged	0.00		39,607.17
01/15/2018	1335	-MULTIPLE-	Void - damaged	0.00		39,607.17
01/15/2018	1336	-MULTIPLE-	Void - Damaged	0.00		39,607.17
01/15/2018	1337	-MULTIPLE-	Void - Damaged	0.00		39,607.17
01/15/2018	1338	-MULTIPLE-	Void - Damaged	0.00		39,607.17
01/15/2018	1339	-MULTIPLE-	Void - Damaged	0.00		39,607.17
01/15/2018	1340	-MULTIPLE-	Void - Damaged	0.00		39,607.17
01/15/2018	1341	-MULTIPLE-	Void - Damaged	0.00		39,607.17
01/15/2018	1342	-MULTIPLE-	Void - Damaged	0.00		39,607.17
01/15/2018	1343	-MULTIPLE-	Void - Damaged	0.00		39,607.17
01/15/2018	1344	-MULTIPLE-	Void - Damaged	0.00		39,607.17
01/15/2018	1345	-MULTIPLE-	Void - Damaged	0.00		39,607.17
01/15/2018	1346	-MULTIPLE-	Void - Damaged	0.00		39,607.17
01/15/2018	1347	-MULTIPLE-	Void - Damaged	0.00		39,607.17
01/15/2018	1348	-MULTIPLE-	Void - Damaged	0.00		39,607.17
01/15/2018	1349	-MULTIPLE-	Void - Damaged	0.00		39,607.17
01/15/2018	1350	-MULTIPLE-	Void - Damaged	0.00		39,607.17
01/18/2018	1353	BUSINESS OBSERVER	Legal Ad		63.75	39,543.42

**Panther Trace II CDD
Cash Register - FY2018**

Date	Num	Name	Memo	Receipts	Disbursements	Balance
01/18/2018	1354	LLS TAX SOLUTIONS, INC	Arbitrage Series 2014		650.00	38,893.42
01/19/2018	1355	FLORIDA DEPARTMENT OF REVENUE	4th Qtr. Sales Tax 2017		67.94	38,825.48
01/24/2018	1356	ADVANCED ENERGY SOLUTIONS	Repair Marquee & Monument		575.20	38,250.28
01/24/2018	1357	CBM SERVICES GROUP	1/1-1/14 - Security Guard		445.50	37,804.78
01/24/2018	1358	FLORIDA FIRE SERVICE, INC	Fire Extinguisher Maint		99.50	37,705.28
01/24/2018	1359	ZEBRA CLEANING TEAM, INC.	Pool Maint - Djanuary		2,124.09	35,581.19
01/26/2018	ACH01262018	Paychex	P/R Fees		104.25	35,476.94
01/26/2018	10076DD	ANNA RAMIREZ	1/7-1/20/18 - P/R		1,541.75	33,935.19
01/26/2018	10074DD	ANTHONY CUNHA	BOS Mtg - 1/22/18		184.70	33,750.49
01/26/2018	10077	JEFFREY A. SPIESS	BOS Mtg - 1/22/18		184.70	33,565.79
01/26/2018	10078DD	Pamela S. Wood	BOS Mtg - 1/22/18		184.70	33,381.09
01/26/2018	ACH01222018	Paychex	1/7-1/20/18 P/R & BOS Mtg - 1/22/18		439.57	32,941.52
01/26/2018	10075DD	RICHARD HEWETT	BOS Mtg - 1/22/18		184.70	32,756.82
01/29/2018	1360	CBM SERVICES GROUP	1/15-1/21 - Security Guard		270.00	32,486.82
01/30/2018	1361	CBM SERVICES GROUP	1/22-1/28 - Security Guard		263.25	32,223.57
01/30/2018	1362	GHS ENVIRONMENTAL, LLC	Water Permit - Additional Fee		280.00	31,943.57
01/31/2018		Bank United	Interest	6.09		31,949.66
BANK UNITED EOM BALANCE 1-31-2018				812.34	43,494.93	31,949.66
02/01/2018	1363	DPFG MANAGEMENT & CONSULTING, LLC	CDD Mgmt - February		4,000.00	27,949.66
02/05/2018	1364	BOCC	12/19-1/23 - 11518 Newgate Crest Dr		6,093.37	21,856.29
02/07/2018	02072018	Panther Trace II.	Transfer to Operating	250,000.00		271,856.29
02/08/2018	1365	YELLOWSTONE LANDSCAPE	Landscape		222,976.23	48,880.06
02/09/2018	ACH02092018	Paychex	P/R Fee		60.76	48,819.30
02/09/2018	10079DD	ANNA RAMIREZ	1/21-2/3/18 - P/R		1,491.75	47,327.55
02/09/2018	ACH02092018	Paychex	1/21-2/3/18 - P/R		316.77	47,010.78
02/12/2018		Panther Trace II.	Rentals/Misc	808.00		47,818.78
02/13/2018	1366	TECO	Electricity		27,428.80	20,389.98
02/16/2018	1367	TECO	Summary Bill - October		12,993.94	7,396.04
02/21/2018	02212018	Panther Trace II.	Transfer to Operating	50,000.00		57,396.04
02/21/2018	1376	CBM SERVICES GROUP	2/12-2/18 - Security Guard		270.00	57,126.04
02/21/2018	1377	JAYMAN ENTERPRISES, LLC	Dog Stations (10)		1,999.90	55,126.14
02/21/2018	1378	REPUBLIC SERVICES	2/1-2/28 - Solid Waste		121.83	55,004.31
02/21/2018	1379	YELLOWSTONE LANDSCAPE	Landscape Maint - February		12,257.00	42,747.31
02/22/2018	1368	CBM SERVICES GROUP	Security		533.25	42,214.06
02/22/2018	1369	FRONTIER COMMUNICATIONS	2/1-2/28 - Internet/Phone		188.94	42,025.12
02/22/2018	1370	REMSON AQUATICS	Lake & Pond Maint		3,170.00	38,855.12
02/22/2018	1371	STRALEY ROBIN VERICKER	Legal Svcs thru 1/15/18		495.00	38,360.12
02/22/2018	1372	TECO	Electricity		16,443.83	21,916.29
02/22/2018	1373	VANGUARD CLEANING SYSTEMS OF TAMPA	CH Cleaning - February		325.00	21,591.29
02/22/2018	1374	YELLOWSTONE LANDSCAPE	Irrigation Repairs		572.35	21,018.94
02/22/2018	1375	ZEBRA CLEANING TEAM, INC.	Pool Maint - February		1,750.00	19,268.94
02/23/2018	ACH02232018	Paychex	P/R fee		60.76	19,208.18
02/23/2018	10080DD	ANNA RAMIREZ	2/4-2/18/18 - P/R		1,491.75	17,716.43
02/23/2018	ACH02232018	Paychex	2/4-2/18/18 - P/R		316.77	17,399.66
02/28/2018		Bank United	Interest	12.75		17,412.41
BANK UNITED EOM BALANCE 2-28-2018				300,820.75	315,358.00	17,412.41
03/01/2018	1380	DPFG MANAGEMENT & CONSULTING, LLC	CDD Mgmt - March		4,000.00	13,412.41
03/02/2018	1382	TECO	VOID: 12/14-1/16 - 11334 Langworth Hill Ln Pump	0.00		13,412.41
03/02/2018	1381	TECO	Electricity		2,119.17	11,293.24
03/05/2018	03052018	Panther Trace II.	Transfer to Operating	50,000.00		61,293.24
03/06/2018	1383	CBM SERVICES GROUP	2/19-2/25 - Security Guard		229.50	61,063.74
03/06/2018	1384	EMG	3/1-5/31 - Monitoring		100.35	60,963.39
03/06/2018	1385	HOME TEAM PEST DEFENSE	Pest Control		100.50	60,862.89
03/06/2018	1386	JAYMAN ENTERPRISES, LLC	Install (10) Dog Stations		460.00	60,402.89
03/06/2018	1387	TECO	VOID:	0.00		60,402.89
03/06/2018	1388	VANGUARD CLEANING SYSTEMS OF TAMPA	CH Cleaning - March		325.00	60,077.89
03/06/2018		TECO	VOID:	0.00		60,077.89
03/06/2018	1389	TECO	Electricity		2,215.21	57,862.68
03/07/2018		Panther Trace II.	Rentals/Misc	982.50		58,845.18
03/09/2018	ACH03092018	Paychex	P/R Fee		60.76	58,784.42
03/09/2018	10082DD	ANNA RAMIREZ	2/18-3/3/18 - P/R		1,491.75	57,292.67
03/09/2018	10081DD	ANTHONY CUNHA	BOS Mtg - 2/26/18		184.70	57,107.97
03/09/2018	10083DD	JEFFREY A. SPIESS	BOS Mtg - 2/26/18		184.70	56,923.27
03/09/2018	10085DD	Pamela S. Wood	BOS Mtg - 2/26/18		184.70	56,738.57
03/09/2018	ACH03092018	Paychex	2/18-3/3/18 - P/R & BOS Mtg		470.57	56,268.00
03/09/2018	10084DD	SCOTT WARD	BOS Mtg - 2/26/18 (2 Mtgs)		369.40	55,898.60
03/12/2018		Elton Alves	Repair Damaged Sod	204.00		56,102.60
03/13/2018	1390	BOCC	1/23-2/21 - 11518 Newgate Crest Dr		4,172.56	51,930.04
03/13/2018	1391	CARL'S LOCK & KEY	Key Svcs - Broken Lock		127.49	51,802.55
03/13/2018	1392	CBM SERVICES GROUP	Security		546.75	51,255.80
03/13/2018	1393	FRONTIER COMMUNICATIONS	3/1-3/31 - Internet/Phone		188.94	51,066.86
03/13/2018	1394	JAYMAN ENTERPRISES, LLC	Misc. Svcs		50.00	51,016.86
03/13/2018	1395	STANTEC CONSULTING SERVICES	Engineering Svcs thru 2/16/18		1,210.00	49,806.86

**Panther Trace II CDD
Cash Register - FY2018**

Date	Num	Name	Memo	Receipts	Disbursements	Balance
03/13/2018	1396	STRALEY ROBIN VERICKER	Legal Svcs thru 2/15/18		1,018.58	48,788.28
03/13/2018	1397	TECO	Electricity		14,101.79	34,686.49
03/13/2018	1398	YELLOWSTONE LANDSCAPE	Mulch		20,900.00	13,786.49
03/13/2018	1399	ZEBRA CLEANING TEAM, INC.	Pool Maint - March		1,650.00	12,136.49
03/19/2018		Paychex	Refund of Fees	9.39		12,145.88
03/21/2018	1400	CBM SERVICES GROUP	3/12-3/18 - Security Guard		732.38	11,413.50
03/21/2018	1401	MHD COMMUNICATIONS	Key Cards		520.00	10,893.50
03/21/2018	1402	REMSON AQUATICS	Lake Maint - March		1,585.00	9,308.50
03/23/2018	ACH03232018	Paychex	P/R Fee		60.76	9,247.74
03/23/2018	10086DD	ANNA RAMIREZ	3/4-3/17/18 - P/R		1,491.75	7,755.99
03/23/2018	ACH03232018	Paychex	3/4-3/17/18 - P/R		316.77	7,439.22
03/27/2018	1403	ALL PHASE PLUMBING SERVICES	Repaired Toilets		590.20	6,849.02
03/27/2018	03272018	Panther Trace II.	Transfer to Operating	50,000.00		56,849.02
03/31/2018		Bank United	Interest	4.83		56,853.85
BANK UNITED EOM BALANCE 3-31-2018				101,200.72	61,759.28	56,853.85
04/01/2018	1404	DPFG MANAGEMENT & CONSULTING, LLC	CDD Mgmt - April		4,000.00	52,853.85
04/02/2018		Paychex	Deposit	9.39		52,863.24
04/03/2018		TECO	QuickBooks generated zero amount transaction for bill	0.00		52,863.24
04/03/2018	1405	REMSON AQUATICS	Aquatic Plants		2,368.75	50,494.49
04/03/2018	1406	STRALEY ROBIN VERICKER	Legal Svcs thru 3/15/18		550.00	49,944.49
04/03/2018	1407	TECO	Electricity		120.03	49,824.46
04/03/2018	1408	ZEBRA CLEANING TEAM, INC.	Pool - Clean Out		125.00	49,699.46
04/06/2018	ACH04062018	Paychex	P/R Fee		70.76	49,628.70
04/06/2018	10087DD	ANNA RAMIREZ	3/18-3/31 - P/R		1,491.75	48,136.95
04/06/2018	ACH04062018	Paychex	3/18-3/31 - P/R		316.77	47,820.18
04/08/2018		Panther Trace II.	Rentals/Advertising	1,570.50		49,390.68
04/12/2018	1409	BOCC	2/21-3/27 - 11518 Newgate Crest Dr		6,591.94	42,798.74
04/12/2018	1410	DISCLOSURE SERVICES, LLC	Dissemination		1,000.00	41,798.74
04/12/2018	1411	ENVERA	VOID:	0.00		41,798.74
04/12/2018	1412	FLORIDA PATIO FURNITURE, INC	Benches		2,030.00	39,768.74
04/12/2018	1413	FRONTIER COMMUNICATIONS	4/1-4/30 - Internet/Phone		188.64	39,580.10
04/12/2018	1414	REMSON AQUATICS	Lake & Pond Maint - April		1,585.00	37,995.10
04/12/2018	1415	REPUBLIC SERVICES	Solid Waste - April		121.83	37,873.27
04/12/2018	1416	TECO	Summary Bill- March		14,038.13	23,835.14
04/12/2018	1417	VANGUARD CLEANING SYSTEMS OF TAMPA	Cleaning Svcs		425.00	23,410.14
04/13/2018	1418	JAYMAN ENTERPRISES, LLC	Pet Waste Removal - March		540.00	22,870.14
04/13/2018	1419	ZEBRA CLEANING TEAM, INC.	Pool Maint		4,340.00	18,530.14
04/16/2018	1420	YELLOWSTONE LANDSCAPE	Landscape		5,884.96	12,645.18
04/16/2018	04162018	Panther Trace II.	Transfer to Operating	50,000.00		62,645.18
04/18/2018	ACH04182018	REPUBLIC SERVICES	3/1-3/31 - Solid Waste		121.83	62,523.35
04/19/2018	1421	FLORIDA DEPARTMENT OF REVENUE	1st Qtr. 2018 - Sales Tax		143.54	62,379.81
04/20/2018	ACH04202018	Paychex	P/R Fee		60.76	62,319.05
04/20/2018	10090	JEFFREY A. SPIESS	BOS Mtg - 3/26/18		184.70	62,134.35
04/20/2018	10091DD	SCOTT WARD	BOS Mtg - 3/26/18		184.70	61,949.65
04/20/2018	10088DD	ANTHONY CUNHA	BOS Mtg - 3/26/18		184.70	61,764.95
04/20/2018	10092DD	Pamela S. Wood	BOS Mtg - 3/26/18		184.70	61,580.25
04/20/2018	10089DD	ANNA RAMIREZ	4/1-4/14 - P/R		1,491.75	60,088.50
04/20/2018	ACH04202018	Paychex	4/1-4/14 - P/R		439.77	59,648.73
04/25/2018	1422	CBM SERVICES GROUP	Security		1,080.00	58,568.73
04/25/2018	1423	CLEAN SWEEP SUPPLY CO	Supplies		198.55	58,370.18
04/25/2018	1424	JAYMAN ENTERPRISES, LLC	Replace Hinges on Tennis Court Door		350.00	58,020.18
04/25/2018	1425	STRALEY ROBIN VERICKER	Legal Svcs thru 4/15/18		270.00	57,750.18
04/25/2018	1426	YELLOWSTONE LANDSCAPE	Landscape		16,399.39	41,350.79
04/26/2018		Panther Trace II.	Transfer to Debit Card		463.00	40,887.79
04/30/2018		Bank United	Interest	7.30		40,895.09
BANK UNITED EOM BALANCE 4-30-2018				51,587.19	67,545.95	40,895.09

EXHIBIT 8.

PANTHER TRACE II COMMUNITY DEVELOPMENT DISTRICT
1060 MAITLAND CENTER COMMONS BLVD., SUITE 340, MAITLAND, FL., 32751

**OPERATION & MAINTENANCE
EXPENDITURES**

Dear Board of Supervisors:

Please see attached the Panther Trace II Check Register reflecting all operation and maintenance expenditures paid from:

April 1, 2018 thru April 30, 2018

Please note that this does not include expenditures previously approved by the Board.

The total amount for items being presented is: **\$ 67,545.95**

Thank you!

District Accounts Payable

**Panther Trace II CDD
Cash Register - FY2018**

Date	Num	Name	Memo	Receipts	Disbursements	Balance
04/01/2018	1404	DPFG MANAGEMENT & CONSULTING, LLC	CDD Mgmt - April		4,000.00	52,853.85
04/02/2018		Paychex	Deposit	9.39		52,863.24
04/03/2018		TECO	QuickBooks generated zero amount transaction for bill	0.00		52,863.24
04/03/2018	1405	REMSON AQUATICS	Aquatic Plants		2,368.75	50,494.49
04/03/2018	1406	STRALEY ROBIN VERICKER	Legal Svcs thru 3/15/18		550.00	49,944.49
04/03/2018	1407	TECO	Electricity		120.03	49,824.46
04/03/2018	1408	ZEBRA CLEANING TEAM, INC.	Pool - Clean Out		125.00	49,699.46
04/06/2018	ACH04062018	Paychex	P/R Fee		70.76	49,628.70
04/06/2018	10087DD	ANNA RAMIREZ	3/18-3/31 - P/R		1,491.75	48,136.95
04/06/2018	ACH04062018	Paychex	3/18-3/31 - P/R		316.77	47,820.18
04/08/2018		Panther Trace II.	Rentals/Advertising	1,570.50		49,390.68
04/12/2018	1409	BOCC	2/21-3/27 - 11518 Newgate Crest Dr		6,591.94	42,798.74
04/12/2018	1410	DISCLOSURE SERVICES, LLC	Dissemination		1,000.00	41,798.74
04/12/2018	1411	ENVERA	VOID:	0.00		41,798.74
04/12/2018	1412	FLORIDA PATIO FURNITURE, INC	Benches		2,030.00	39,768.74
04/12/2018	1413	FRONTIER COMMUNICATIONS	4/1-4/30 - Internet/Phone		188.64	39,580.10
04/12/2018	1414	REMSON AQUATICS	Lake & Pond Maint - April		1,585.00	37,995.10
04/12/2018	1415	REPUBLIC SERVICES	Solid Waste - April		121.83	37,873.27
04/12/2018	1416	TECO	Summary Bill- March		14,038.13	23,835.14
04/12/2018	1417	VANGUARD CLEANING SYSTEMS OF TAMPA	Cleaning Svcs		425.00	23,410.14
04/13/2018	1418	JAYMAN ENTERPRISES, LLC	Pet Waste Removal - March		540.00	22,870.14
04/13/2018	1419	ZEBRA CLEANING TEAM, INC.	Pool Maint		4,340.00	18,530.14
04/16/2018	1420	YELLOWSTONE LANDSCAPE	Landscape		5,884.96	12,645.18
04/16/2018	04162018	Panther Trace II.	Transfer to Operating	50,000.00		62,645.18
04/18/2018	ACH04182018	REPUBLIC SERVICES	3/1-3/31 - Solid Waste		121.83	62,523.35
04/19/2018	1421	FLORIDA DEPARTMENT OF REVENUE	1st Qtr. 2018 - Sales Tax		143.54	62,379.81
04/20/2018	ACH04202018	Paychex	P/R Fee		60.76	62,319.05
04/20/2018	10090	JEFFREY A. SPIESS	BOS Mtg - 3/26/18		184.70	62,134.35
04/20/2018	10091DD	SCOTT WARD	BOS Mtg - 3/26/18		184.70	61,949.65
04/20/2018	10088DD	ANTHONY CUNHA	BOS Mtg - 3/26/18		184.70	61,764.95
04/20/2018	10092DD	Pamela S. Wood	BOS Mtg - 3/26/18		184.70	61,580.25
04/20/2018	10089DD	ANNA RAMIREZ	4/1-4/14 - P/R		1,491.75	60,088.50
04/20/2018	ACH04202018	Paychex	4/1-4/14 - P/R		439.77	59,648.73
04/25/2018	1422	CBM SERVICES GROUP	Security		1,080.00	58,568.73
04/25/2018	1423	CLEAN SWEEP SUPPLY CO	Supplies		198.55	58,370.18
04/25/2018	1424	JAYMAN ENTERPRISES, LLC	Replace Hinges on Tennis Court Door		350.00	58,020.18
04/25/2018	1425	STRALEY ROBIN VERICKER	Legal Svcs thru 4/15/18		270.00	57,750.18
04/25/2018	1426	YELLOWSTONE LANDSCAPE	Landscape		16,399.39	41,350.79
04/26/2018		Panther Trace II.	Transfer to Debit Card		463.00	40,887.79
04/30/2018		Bank United	Interest	7.30		40,895.09
BANK UNITED EOM BALANCE 4-30-2018				51,587.19	67,545.95	40,895.09



250 International Parkway, Suite 280
Lake Mary, FL 32746
TEL: 321-263-0132

PLEASE REMIT PAYMENT TO CORPORATE HEADQUARTERS:-
27127 Calle Arroyo, Suite 1910 - San Juan Capistrano, CA 92675
(949) 388-9269, Accounts Receivable

Panther Trace II CDD
c/o DPFG
1060 Maitland Center Commons, Suite 340
Maitland, FL 32751

Invoice

Invoice Date: April 01, 2018
Invoice Num: 79122
Contract#:
Account#: 1497(a):
Fed I.D. No: 61-1806473

In Reference To: For services rendered for the period ending: April 01, 2018
Panther Trace II Community Development District ("CDD") Management Services:

Reimbursable Expenses:

<u>Date</u>	<u>Consultant</u>	<u>Description</u>	<u>Amount</u>
4/1/2018	MA	Professional Management Services: Monthly CDD management including management, records, administration, general fund accounting, and regulatory compliance work. - Service Period: 4/1/18 - 4/30/18	\$4,000.00

Total Expenses: \$4,000.00

Amount Due This Invoice: \$4,000.00

This debt will be assumed to be valid unless you dispute its validity in writing within 30 days of the Invoice date

DPFG is now accepting the following credit cards;
VISA, MASTERCARD, DISCOVER and AMERICAN EXPRESS

Remson Aquatics

11207 Remson Lane
Riverview, FL 33579
(813) 671-2851
kar@remsonaquatics.com
www.remsonaquatics.com

INVOICE

BILL TO

Panther Trace II CDD
c/o DPFG
250 International Parkway,
Suite 280
Lake Mary, FL 32746

SHIP TO

Panther Trace II CDD
c/o DPFG
250 International Parkway,
Suite 280
Lake Mary, FL 32746

INVOICE # 109989

DATE 03/26/2018

DUE DATE 04/25/2018

TERMS Net 30

ACTIVITY

AMOUNT

Aquatic Plantings

2,368.75

Aquatic Plantings installation within 6 littoral shelves in the community of Panther Trace II CDD

Plants to be installed are soft stem bulrush and cord grass

Ponds and Plant amount;

Pond CA - 300 plants

Pond M- 300 plants

Pond D- 350 plants

Pond N- 400 plants

Pond 12 - 200 plants

Pond 73 - 300 plants

BAI. ANCE DUE

\$2,368.75

Straley Robin Vericker

1510 W. Cleveland Street

Tampa, FL 33606

Telephone (813) 223-9400 * Facsimile (813) 223-5043

Federal Tax Id. - 20-1778458

Panther Trace II Community Development District

c/o DPF Management & Consulting, LLC

250 International Parkway

Suite 280

Lake Mary, FL 32746

March 21, 2018

Client: 001036

Matter: 000001

Invoice #: 15518

Page: 1

RE: General Matters

For Professional Services Rendered Through March 15, 2018

SERVICES

Date	Person	Description of Services	Hours	
2/20/2018	JMV	REVIEW GHS PROPOSAL; PREPARE AGREEMENT.	1.2	
2/23/2018	JMV	REVIEW AGENDA PACKET; REVIEW EMAIL FROM R. RIVAS; REVIEW PROPOSED CHANGES TO GHS AGREEMENT.	0.5	
2/26/2018	JMV	TELEPHONE CALL FROM R. RIVAS.	0.3	
Total Professional Services			2.0	\$550.00

PERSON RECAP

Person	Hours	Amount
JMV John M. Vericker	2.0	\$550.00

March 21, 2018

Client: 001036

Matter: 000001

Invoice #: 15518

Page: 2

Total Services	\$550.00	
Total Disbursements	\$0.00	
Total Current Charges		\$550.00

PAY THIS AMOUNT

\$550.00

Please Include Invoice Number on all Correspondence

PANTHER TRACE II CDD
DPFG
PANTHER TRCE PH2
RIVERVIEW, FL 33569-0000

Statement Date: 03/21/2018

Account: 211015090031

Current month's charges:	\$2,029.47
Total amount due:	\$114.95
Payment Due By:	04/11/2018

Your Account Summary

Previous Amount Due	\$3,943.99
Payment(s) Received Since Last Statement	-\$5,858.51
Credit balance after payments and credits	-\$1,914.52
Current Month's Charges	\$2,029.47
Total Amount Due	\$114.95

More Value to You, Tampa Bay

The rate you
pay today is
7% lower than
9 years ago.



Applied to a 1,000-kWh residential bill.

Amount not paid by due date may be assessed a late payment charge and an additional deposit.



Billing and payments made easy!

We offer many convenient and free ways to receive and pay your electric bill, such as Paperless Billing and Direct Debit. For more on our convenient options, log into **tecoaccount.com** or visit **tampaelectric.com** and select *Pay Your Bill*.

Account: 211015090031
Statement Date: 03/21/2018
Current month's charges due 04/11/2018

Details of Charges – Service from 02/15/2018 to 03/15/2018

Service for: PANTHER TRCE PH2, RIVERVIEW, FL 33569-0000

Rate Schedule: Lighting Service

Lighting Service Items LS-1 (Bright Choices) for 29 days

Lighting Energy Charge	3124 kWh @ \$0.03207/kWh	\$100.19
Fixture & Maintenance Charge	71 Fixtures	\$775.32
Lighting Pole / Wire	71 Poles	\$1052.22
Lighting Fuel Charge	3124 kWh @ \$0.03095/kWh	\$96.69
Florida Gross Receipt Tax		\$5.05
Franchise Fee		\$0.00
Lighting Charges		\$2,029.47

Total Current Month's Charges

\$2,029.47

00005400-0011232-Page 3 of 4



ACCOUNT INVOICE

tampaelectric.com



Statement Date: 03/21/2018

Account: 211003407197

PANTHER TRACE TOWNHOMES 2 ASSOC INC
PANTHER TRACE II CDD/DPFG
12451 EVINGTON POINT DR PMP
RIVERVIEW, FL 33579-0000

Current month's charges:	\$209.73
Total amount due:	\$5.08
Payment Due By:	04/11/2018

Your Account Summary

Previous Amount Due	\$395.39
Payment(s) Received Since Last Statement	-\$600.04
Credit balance after payments and credits	-\$204.65
Current Month's Charges	\$209.73
Total Amount Due	\$5.08

More Value to You, Tampa Bay

The rate you
pay today is
7% lower than
9 years ago.



Applies to a 100% residential bill.

Amount not paid by due date may be assessed a late payment charge and an additional deposit.



Billing and payments made easy!

We offer many convenient and free ways to receive and pay your electric bill, such as Paperless Billing and Direct Debit. For more on our convenient options, log into **tecoaccount.com** or visit **tampaelectric.com** and select *Pay Your Bill*.

Account: 211003407197
Statement Date: 03/21/2018
Current month's charges due 04/11/2018

Details of Charges – Service from 02/15/2018 to 03/16/2018

Service for: 12451 EVINGTON POINT DR PMP, RIVERVIEW, FL 33579-0000

Rate Schedule: General Service - Non Demand

Meter Number	Read Date	Current Reading	-	Previous Reading	=	Total Used	Multiplier	Billing Period
B59250	03/16/2018	21,526		19,545		1,981 kWh	1	30 Days

Basic Service Charge

\$19.94

Energy Charge

1,981 kWh @ \$0.06184/kWh

\$122.51

Fuel Charge

1,981 kWh @ \$0.03132/kWh

\$62.04

Florida Gross Receipt Tax

\$5.24

Electric Service Cost

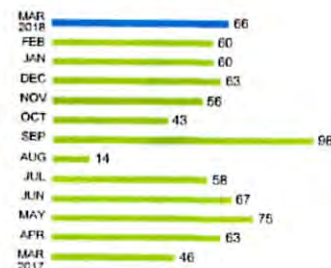
\$209.73

Total Current Month's Charges

\$209.73

Tampa Electric Usage History

Kilowatt-Hours Per Day
(Average)





Thanks For Your Business!

Zebra Cleaning Team, Inc.
P.O. BOX 3456
APOLLO BEACH, FL 33572
813-458-2942

DATE: MARCH 26, 2018
INVOICE #2475
EXPIRATION DATE

TO Panther Trace II CDD

TECHNICIAN	JOB SITE	INSTALLATION DATE	PAYMENT TERMS	DUE DATE
Lance Wood		3-28-2018		

QTY	ITEM #	DESCRIPTION	UNIT PRICE	LINE TOTAL
		Human fecal clean up		\$125.00

SUBTOTAL	
SALES TAX	
TOTAL	\$125.00

Comments:



Hillsborough
County Florida

CUSTOMER NAME	ACCOUNT NUMBER	BILL DATE	DUE DATE
PANTHER TRACE II	8533120000	03/28/2018	04/18/2018

Service Address: 11518 NEWGATE CREST DR

S-Page 1 of 1

METER NUMBER	PREVIOUS DATE	PREVIOUS READ	PRESENT DATE	PRESENT READ	CONSUMPTION (IN GALLONS)	READ TYPE	METER DESCRIPTION
49069267	02/21/2018	54699	03/27/2018	60461	576200	ACTUAL	WATER

Service Address Charges

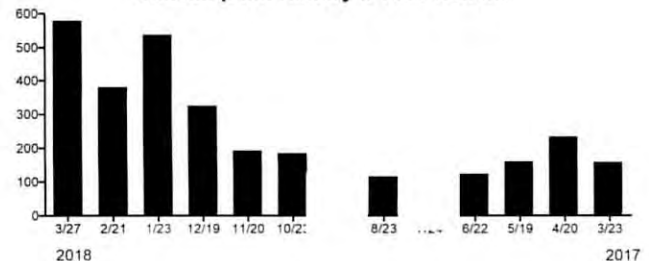
Customer Bill Charge	\$4.11
Purchase Water Pass-Thru	\$1,688.27
Water Base Charge	\$89.60
Water Consumption Charge	\$2,028.48
Sewer Base Charge	\$217.39
Sewer Usage Charge	\$2,564.09
Total Service Address Charges	\$6591.94

Summary of Account Charges

Previous Balance	\$4,172.56
Net Payments - Thank You	(\$4,172.56)
Total Account Charges	\$6591.94

AMOUNT DUE	\$6591.94
-------------------	------------------

Consumption History x 1000 Gallons





Invoice

Date	Invoice #
4/2/2018	45510

Bill To
Panther Trace II CDD 11518 Newgate Crest Dr. Riverview, FL 33579 Anna Ramierz/813-671-0831 pt2clubhousemgr@gmail.com

Ship To
Panther Trace II CDD 11518 Newgate Crest Dr. Riverview, FL 33579 Anna Ramierz/813-671-0831 pt2clubhousemgr@gmail.com

P.O. No.	Terms	Due Date	Rep	Ship Date	Ship Via	FOB
Anna	Pre-pay	4/2/2018	Karen	4/2/2018	Our Truck	Palmetto

Qty	Item	Description	Rate	Amount
1	MISC	Bleachers The first bench is 16 1/2 inches off the ground. Each bench seat is 9 1/2 inches wide by 90 inches long. **** ALL ONE PIECE***** The second bench is 22 1/2 inches off the ground, and the third bench is 28 1/2 inches off the ground. 84" long (actual above requirements need to be defined still but this is approx pricing for any of the above) FRAME COLOR: Weathergreen	1,880.00	1,880.00
	Freight	Shipping Charge - no set up/delivery only	150.00	150.00

Thank you for your business.			Subtotal	\$2,030.00
------------------------------	--	--	-----------------	------------

Sales Tax (0.0%)	\$0.00
Total	\$2,030.00
Payments/Credits	\$0.00
Balance Due	\$2,030.00

Phone #	Fax #	E-mail	Web Site
941-722-5643	941-723-9223	info@floridapatio.net	http://www.floridapatio.net

Florida Patio Furniture Inc.
 506 8th St W
 Palmetto, FL 34221



FLORIDA PATIO FURNITURE INC.

506 8th Street West
Palmetto, FL 34221

Estimate

Date	Estimate #
3/14/2018	14307

Name / Address
Panther Trace II CDD 11518 Newgate Crest Dr. Riverview, FL 33579 Anna Ramierz/813-671-0831 pt2clubhousemgr@gmail.com

Ship To
Panther Trace II CDD 11518 Newgate Crest Dr. Riverview, FL 33579 Anna Ramierz/813-671-0831 pt2clubhousemgr@gmail.com

P.O. No.	Terms	Due Date	Rep	FOB
Anna	50%DN Bal C.O.D.	3/14/2018	Karen	Palmetto

Item	Quantity	Description	Cost	Total
MISC	1	Double attached Aluminum bleachers 7.5' L BACK TO BACK - 3 row bleachers with seats 25 config *****SEE PICTURE***** FRAME COLOR: TBD	1,880.00	1,880.00T
Freight		Shipping Charge - no set up/delivery only	150.00	150.00

Here is your requested Estimate.

Subtotal \$2,030.00

Sales Tax (0.0%) \$0.00

Total \$2,030.00

Phone #	Fax #
941-722-5643	941-723-9223

Account Summary

New Charges Due Date	4/25/18
Billing Date	4/01/18
Account Number	813-671-0831-122006-5
PIN	8707
Previous Balance	188.94
Payments Received Thru 3/21/18	-188.94
Thank you for your payment!	
Balance Forward	.00
New Charges	188.64
Total Amount Due	\$188.64

**Make your business a more
inviting place**



FiOS® TV for Business


- Stay informed on latest news and weather
- Get premium sports, national news and music choices
- Keep your customers entertained
- Choose from flexible packages starting at \$28.99

Find the right package for you and your business at
1.877.659.8216 or **business.frontier.com**

Manage Your Account

To Pay Your Bill

 **Online:** Frontier.com  1.800.801.6652

 **Pay by Mail**

To Contact Us

 **Chat:** Frontier.com  **Online:** Frontier.com/helpcenter

 1.800.921.8102  **Email:** ContactBusiness@ftr.com

CURRENT BILLING SUMMARY

Local Service from 04/01/18 to 04/30/18

Qty Description	813/671-0831.0	Charge
Basic Charges		
Frontier Solutions for Business - 2 Year Term		87.00
Access Recovery Chrg-Bus		2.04
Federal Subscriber Line Charge - Bus		6.50
Federal Excise Tax		.26
Federal USF Recovery Charge		1.58
FCA Long Distance - Federal USF Surcharge		1.84
FL State Communications Services Tax		4.87
FL State Gross Receipts Tax		2.49
County Communications Services Tax		4.56
FL Telecommunications Relay Service		.10
Hillsborough County 911 Surcharge		.40
Total Basic Charges		111.64
Non Basic Charges		
FiOS Internet 25/25 -Business		114.99
Call Waiting Id		.50
Other Charges-Detailed Below		-17.07
Partial Month Charges-Detailed Below		-25.00
Federal Excise Tax		.11
FCA Long Distance - Federal USF Surcharge		.37
FL State Communications Services Tax		-.89
FL State Gross Receipts Tax		-.46
County Communications Services Tax		-.84
Total Non Basic Charges		71.71
Toll/Other		
Other Charges-Detailed Below		3.99
FCA Long Distance - Federal USF Surcharge		.73
FL State Communications Services Tax		.23
FL State Gross Receipts Tax		.12
County Communications Services Tax		.22
Total Toll/Other		5.29

TOTAL 188.64

** ACCOUNT ACTIVITY **

Qty Description	Order Number	Effective Dates	
1 Business High Speed Internet Fee	AUTOCH	4/01	1.99
1 Frontier Road Work Recovery Surcharge			
	AUTOCH	4/01	.95
Solutions Bundle Discount	AUTOCH	4/01	-22.00
1 Federal Primary Carrier Single Line Charge			
	AUTOCH	4/01	1.99
1 Carrier Cost Recovery Surcharge	AUTOCH	4/01	3.99
813/671-0831	Subtotal		-13.08
Partial Month Charges			
FiOS Internet Bus 99 MO	PROMOTION	4/01 4/30	-25.00
813/671-0831	Subtotal		-25.00
	Subtotal		-38.08

CIRCUIT ID DETAIL

10/KQXA/132840/ /VZFL

CUSTOMER TALK

If your bill reflects that you owe a Balance Forward, you must make a payment immediately in order to avoid collection activities. You must pay a minimum of \$96.66 by your due date to avoid disconnection of your local service. All other charges should be paid by your due date to keep your account current.

Information about Pay Per Use Features...

Beginning with this bill, pay per use features Busy Redial, Call Return, Call Trace, and 3-Way Calling increased by up to \$1.25 per feature. Questions? Please contact customer service.

Important Billing Information...

Beginning with your next bill, your phone line rate will increase up to \$1.50. Customers who subscribe to Frontier Simply Unlimited, Frontier OneVoice or who are in a current contract are not affected by this change. Questions? Please contact customer service.

Operator Services Discontinuation Information...

Pending federal and state regulatory approval where applicable, Frontier Communications will discontinue operator service features Busy Verification (BV) and Busy Interrupt (BI) effective June 1, 2018. These services will be discontinued throughout Frontier's service territory nationwide. Please note that this discontinuance is for the BV and BI features only and does not include all operator services.

The FCC will normally authorize this proposed discontinuance of service unless it is shown that customers would be unable to receive service or a reasonable substitute from another carrier or that the public convenience and necessity is otherwise adversely affected. If you wish to object, you should file your comments as soon as possible, but no later than 15 days after the Commission releases public notice of the proposed discontinuance. You may file your comments electronically through the FCC's Electronic Comment Filing System using the docket number established in the Commission's public notice for this proceeding, or you may address them to the Federal Communications Commission, Wireline Competition Bureau, Competition Policy Division, Washington, DC 20554, and include in your comments a reference to the 63.71 Application of Frontier Communications. Comments should include specific information about the impact of this proposed discontinuance upon you or your company, including any inability to acquire reasonable substitute service. You may also contact us in writing at Frontier Communications, P. O. Box 5166, Tampa, FL 33675.

Detail of Frontier Charges

Toll charged to 813/671-0831

Remson Aquatics
11207 Remson Lane
Riverview, FL 33579
(813) 671-2851
kar@remsonaquatics.com
www.remsonaquatics.com

INVOICE

BILL TO

Panther Trace II CDD
c/o DPFG
250 International Parkway,
Suite 280
Lake Mary, FL 32746

SHIP TO

Panther Trace II CDD
c/o DPFG
250 International Parkway,
Suite 280
Lake Mary, FL 32746

INVOICE # 110024**DATE** 04/05/2018**DUE DATE** 05/05/2018**TERMS** Net 30

ACTIVITY**AMOUNT**

Apr Srv
April Lake Maintenance
Service Provided-04/05/18

1,585.00

BALANCE DUE**\$1,585.00**



PO Box 271647
Tampa FL 33688-164747

Customer Service (813) 265-0292
RepublicServices.com/Support

Account Number

Invoice Number

Invoice Date

Previous Balance

Payments/Adjustments

Current Invoice Charges

3-0696-1037561

0696-000721859

March 17, 2018

\$248.66

-\$126.83

\$126.83

Total Amount Due

\$248.66

Payment Due Date

Past Due

PAYMENTS/ADJUSTMENTS

Description	Reference	Amount
Payment - Thank You 03/08	666666	\$5.00
Payment - Thank You 03/08	1378	-\$121.83

CURRENT INVOICE CHARGES

Description	Reference	Quantity	Unit Price	Amount
Panther Trace Community 11508 Newgate Crest Dr CSA CF3-000672				
Riverview, FL Contract: 9696002 (C1)				
1 Waste Container 4 Cu Yd, 1 Lift Per Week				
Disposal:SOUTH CO - CLASS 1				
Pickup Service 04/01-04/30			\$116.58	\$116.58
Administrative Fee				\$5.25
Late Fee 03/17				\$5.00
CURRENT INVOICE CHARGES, Due by April 06, 2018				\$126.83

not late

Electronics Recycling with BlueGuard™

Convenient recycling solutions that are safe for your business and good for our planet. To learn more, visit RepublicServices.com/Electronics



Past Due

30 Days
\$126.83

60 Days
\$0.00

90+ Days
-\$5.00

L2RCACDTY9 000575 1NNNNNNNNNN NNN NNN 001 001 001153 20727782.1

PANTHER TRACE II CDD
250 INTERNATIONAL PKWY, STE 280
LAKE MARY, FL 32746-5018

Statement Date: 04/05/18

Account: 311000010224

Past Due – Pay Immediately

~~\$302.35~~

Current month's charges:

\$14,114.04

Total amount due:

\$14,416.39

Payment Due By:

04/19/18

Your Account Summary

Previous Amount Due	\$14,404.14
Payment(s) Received Since Last Statement	-\$14,101.79
Past Due – Pay Immediately	\$302.35
Current Month's Charges	\$14,114.04
Total Amount Due	\$14,416.39

Credit being issued
Disregard lat fees - don't pay

- 378.26 = 14038.13

Things to do:

- ✓ Read new bill carefully
- ✓ Make note of new account number
- ✓ Check out guide on last page
- ✓ Register at tecoaccount.com

Amount not paid by due date may be assessed a late payment charge and an additional deposit.



More options for you.

Visit tecoaccount.com to view and pay your bill, manage your information and more, 24/7 from any device.

Contact Information

Residential Customer Care

813-223-0800 (Hillsborough County)
863-299-0800 (Polk County)
888-223-0800 (All other counties)

Commercial Customer Care

866-832-6249

Hearing Impaired/TTY

711

Power Outages Toll-Free

877-588-1010

Energy-Saving Programs

813-275-3909

Mail Payments to

TECO
P.O. Box 31318
Tampa, FL 33631-3318

All Other Correspondence

Tampa Electric
P.O. Box 111
Tampa, FL 33601-0111

Understanding Your Electric Charges

Average kWh per day The average amount of electricity purchased per day.

Basic Service Charge - A fixed monthly amount to cover the cost of providing service to your location.

Bright ChoicesSM The number of light fixtures and/or poles leased from Tampa Electric, and associated fees and charges.

Budget Billing - Optional plan takes the highs and lows out of monthly electric bills. This "leveling" billing plan averages your last 12 monthly billing periods so you can pay about the same amount for your service each month.

Energy Charge The cost (except fuel) of producing the electricity you purchased, including conservation, environmental and capacity cost recovery charges.

Estimated If Tampa Electric was unable to read your meter, "ESTIMATED" will appear. Your electric use has been estimated based on previous usage. The meter is scheduled to be read next month, and any difference between the estimate and actual use will be adjusted accordingly.

Florida Gross Receipts Tax A tax is imposed on gross receipts from utility services that are delivered to retail customers in Florida, in accordance with Chapter 203 of the Florida Statutes. The tax is levied on utility companies, which collect the tax from all customers, unless exempt, and remit to the state.

Florida State Tax A privilege tax imposed on every person who engages in the business of selling or renting tangible personal property at retail in the state, in accordance with Chapter 212 of the Florida Statutes.

Franchise Fee A fee levied by a municipality for the right to utilize

Fuel Charge - Cost of fuel used to produce electricity you purchased. Fuel costs are passed through from fuel suppliers to our customers with no markup or profit to Tampa Electric.

Kilowatt-Hours (kWh) The basic measurement of electric energy use.

Late Payment Charge - For past due amounts more than \$10, the late payment charge is the greater of \$5 or 1.5% of the past due amount. For past due amounts of \$10 or less, the late payment charge is 1.5% of the past due amount.

Municipal Public Service Tax - In addition to the Franchise Fee, many municipalities levy a tax on the electricity you use. It is collected by Tampa Electric and paid to the municipality.

Past Due - Previous charges that are past due are subject to a late payment charge fee and may result in disconnection.

Rate Schedule - The amount (rate) you pay depends on your customer category. The cost of providing service varies with the customer group.

Renewable EnergySM The amount of electricity purchased from renewable sources.

Share - A program co-sponsored by Tampa Electric and the Salvation Army where customers can help pay the energy bills of customers in need. A one-time contribution can be made, or your monthly elected contribution will appear on your bill. Your contribution is tax deductible and is matched by Tampa Electric.

Total Amount Due - This month's charges will be past due after the date shown. **THIS DATE DOES NOT EXTEND THE DATE ON ANY PREVIOUS BALANCE.** It is important that you pay your bill before this date in order to avoid interruption of service.

Billed Individual Accounts



00000001-00000003-Page 5 of 32

ACCOUNT NAME	ACCOUNT NUMBER	ADDRESS	AMOUNT
PANTHER TRACE II CDD	211015069886	PANTHER TRCE, PH 2B1 RIVERVIEW, FL 33569-0000	\$971.86
PANTHER TRACE II CDD	211015069753	PANTHER TRACE 2B3 RIVERVIEW, FL 33569-0000	\$1429.19
PANTHER TRACE II CDD	211015069647	11393 PANTHER TRACE BLVD RIVERVIEW, FL 33579-0000	\$26.98
PANTHER TRACE II CDD	211015069530	11494 PANTHER TRACE BLVD RIVERVIEW, FL 33579-0000	\$30.90
PANTHER TRACE II CDD	211015069423	12420 SILTON PEACE DR RIVERVIEW, FL 33579-3946	\$30.70
PANTHER TRACE II CDD	211015069316	11503 PANTHER TRACE BLVD RIVERVIEW, FL 33579-0000	\$30.32
PANTHER TRACE II CDD	211015069217	11604 PANTHER TRACE BLVD RIVERVIEW, FL 33579-0000	\$30.61
PANTHER TRACE II CDD	211015069092	11605 PANTHER TRACE BLVD RIVERVIEW, FL 33579-0000	\$27.16
PANTHER TRACE II CDD	211015068979	11693 PANTHER TRACE BLVD RIVERVIEW, FL 33579-0000	\$28.90
PANTHER TRACE II CDD	211015068862	11794 PANTHER TRACE BLVD RIVERVIEW, FL 33579-0000	\$26.31
PANTHER TRACE II CDD	211015068748	11807 PANTHER TRACE BL RIVERVIEW, FL 33579-0000	\$26.03
PANTHER TRACE II CDD	211015068615	PANTHER TRCE, PH 2B2 RIVERVIEW, FL 33569-0000	\$1772.21
PANTHER TRACE II CDD	211015068508	2A2 N RIVERVIEW, FL 33569-0000	\$1257.70
PANTHER TRACE II CDD	211015068375	PANTHER TRACE BLVD RIVERVIEW, FL 33579-0000	\$1486.37
PANTHER TRACE II CDD	211015068243	2A 1 RIVERVIEW, FL 33569-0000	\$1143.35
PANTHER TRACE II CDD	211015068128	PANTHER TRACE 2A2 SW RIVERVIEW, FL 33569-0000	\$1657.86
PANTHER TRACE II CDD	211015068003	PANTHER TRACE 2A2 SE RIVERVIEW, FL 33569-0000	\$914.69
PANTHER TRACE II CDD	211015067914	PANTHER TRACE 2A1 RIVERVIEW, FL 33569-0000	\$971.86
PANTHER TRACE II CDD	211015067799	PANTHER TRACE 2A SW BL RIVERVIEW, FL 33569-0000	\$628.84
PANTHER TRACE II CDD	211015067682	11518 NEWGATE CREST DR, B RIVERVIEW, FL 33569-0000	\$830.18
PANTHER TRACE II CDD	211015067542	11901 1/7 PANTHER TRACE BL RIVERVIEW, FL 33569-0000	\$25.45

Billed Individual Accounts continued

PANTHER TRACE II CDD	211015067419	11518 NEWGATE CREST DR, A RIVERVIEW, FL 33569-0000	\$198.30
PANTHER TRACE II CDD	211015067294	11518 NEW GATE CREST DR IRR RIVERVIEW, FL 33569-0000	\$192.75
PANTHER TRACE II CDD	211003406793	11590 PANTHER TRACE BLVD RIVERVIEW, FL 33579-0000	\$375.52



Account: 211015069886
Statement Date: 04/02/18

Details of Charges – Service from 02/15/18 to 03/15/18

Service for: PANTHER TRCE, PH 2B1, RIVERVIEW, FL 33569-0000

Rate Schedule: Lighting Service

Lighting Service Items LS-1 (Bright Choices) for 29 days

Lighting Energy Charge	1496 kWh @ \$0.03207/kWh	\$47.98
Fixture & Maintenance Charge	34 Fixtures	\$371.28
Lighting Pole / Wire	34 Poles	\$503.88
Lighting Fuel Charge	1496 kWh @ \$0.03095/kWh	\$46.30
Florida Gross Receipt Tax		\$2.42
Lighting Charges		\$971.86
Current Month's Electric Charges		\$971.86

00000001-00000004-Page 7 of 32

Account: 211015069753

Statement Date: 04/02/18

Details of Charges – Service from 02/15/18 to 03/15/18

Service for: PANTHER TRACE 2B3, RIVERVIEW, FL 33569-0000

Rate Schedule: Lighting Service

Lighting Service Items LS-1 (Bright Choices) for 29 days

Lighting Energy Charge	2200 kWh @ \$0.03207/kWh	\$70.55
Fixture & Maintenance Charge	50 Fixtures	\$546.00
Lighting Pole / Wire	50 Poles	\$741.00
Lighting Fuel Charge	2200 kWh @ \$0.03095/kWh	\$68.09
Florida Gross Receipt Tax		\$3.55
Lighting Charges		\$1,429.19
Current Month's Electric Charges		\$1,429.19



Account: 211015069647
Statement Date: 04/02/18

Details of Charges – Service from 02/15/18 to 03/15/18

Service for: 11393 PANTHER TRACE BLVD, RIVERVIEW, FL 33579-0000

Rate Schedule: General Service - Non Demand

00000001-00000005-Page 9 of 32

Meter Number	Read Date	Current Reading	-	Previous Reading	=	Total Used	Multiplier	Billing Period
B64222	03/15/18	8,146		8,130		16 kWh	1	29 Days
Basic Service Charge						\$19.94		
Energy Charge						16 kWh @ \$0.06184/kWh		
Fuel Charge						16 kWh @ \$0.03132/kWh		
Florida Gross Receipt Tax						\$0.55		
Electric Service Cost							\$21.98	
Other Fees and Charges								
Electric Late Payment Fee						\$5.00		
Total Other Fees and Charges							\$5.00	
Current Month's Electric Charges							\$26.98	

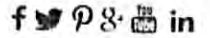
Tampa Electric Usage History
Kilowatt-Hours Per Day (Average)





ACCOUNT INVOICE

tampaelectric.com



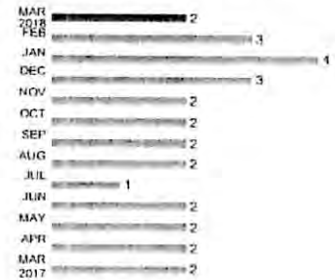
Account: 211015069530
Statement Date: 04/02/18

Details of Charges – Service from 02/15/18 to 03/15/18

Service for: 11494 PANTHER TRACE BLVD, RIVERVIEW, FL 33579-0000

Rate Schedule: General Service - Non Demand

Meter Number	Read Date	Current Reading	-	Previous Reading	=	Total Used	Multiplier	Billing Period
B55403	03/15/18	7,648		7,591		57 kWh	1	29 Days
Basic Service Charge						\$19.94	Tampa Electric Usage History Kilowatt-Hours Per Day (Average)	
Energy Charge						57 kWh @ \$0.06184/kWh \$3.52		
Fuel Charge						57 kWh @ \$0.03132/kWh \$1.79		
Florida Gross Receipt Tax						\$0.65		
Electric Service Cost								
Other Fees and Charges								
Electric Late Payment Fee						\$5.00		
Total Other Fees and Charges								
Current Month's Electric Charges								
							\$25.90	
							\$5.00	
							\$30.90	



00000001-00000005-Page 10 of 32

Account: 211015069423
Statement Date: 04/02/18



Details of Charges – Service from 02/15/18 to 03/15/18

Service for: 12420 SILTON PEACE DR, RIVERVIEW, FL 33579-3946

Rate Schedule: General Service - Non Demand

Meter Number	Read Date	Current Reading	-	Previous Reading	=	Total Used	Multiplier	Billing Period
B55456	03/15/18	6,945		6,890		55 kWh	1	29 Days
Basic Service Charge						\$19.94		
Energy Charge						55 kWh @ \$0.06184/kWh		
Fuel Charge						55 kWh @ \$0.03132/kWh		
Florida Gross Receipt Tax						\$0.64		
Electric Service Cost							\$25.70	
Other Fees and Charges								
Electric Late Payment Fee						\$5.00		
Total Other Fees and Charges							\$5.00	
Current Month's Electric Charges							\$30.70	

Tampa Electric Usage History
Kilowatt-Hours Per Day (Average)

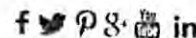


00000001-00000006-Page 11 of 32



ACCOUNT INVOICE

tampaelectric.com



Account: 211015069316
Statement Date: 04/02/18

Details of Charges – Service from 02/15/18 to 03/15/18

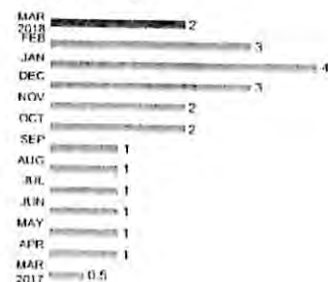
Service for: 11503 PANTHER TRACE BLVD, RIVERVIEW, FL 33579-0000

Rate Schedule: General Service - Non Demand

Meter Number	Read Date	Current Reading	-	Previous Reading	=	Total Used	Multiplier	Billing Period
B55455	03/15/18	7,232		7,181		51 kWh	1	29 Days
Basic Service Charge						\$19.94		
Energy Charge						51 kWh @ \$0.06184/kWh		
Fuel Charge						51 kWh @ \$0.03132/kWh		
Florida Gross Receipt Tax						\$0.63		
Electric Service Cost							\$25.32	
Other Fees and Charges								
Electric Late Payment Fee						\$5.00		
Total Other Fees and Charges							\$5.00	
Current Month's Electric Charges							\$30.32	

Tampa Electric Usage History

Kilowatt-Hours Per Day (Average)



00000001-00000005-Page 12 of 32



Account: 211015069217
Statement Date: 04/02/18

Details of Charges – Service from 02/15/18 to 03/15/18

Service for: 11604 PANTHER TRACE BLVD, RIVERVIEW, FL 33579-0000

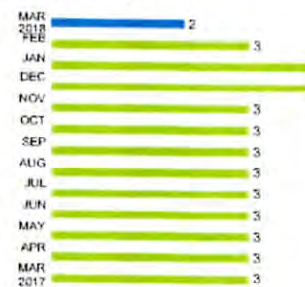
Rate Schedule: General Service - Non Demand

00000001-0000007-Page 13 of 32

Meter Number	Read Date	Current Reading	-	Previous Reading	=	Total Used	Multiplier	Billing Period
B55454	03/15/18	7,298		7,244		54 kWh	1	29 Days
Basic Service Charge						\$19.94		
Energy Charge						54 kWh @ \$0.06184/kWh		
Fuel Charge						54 kWh @ \$0.03132/kWh		
Florida Gross Receipt Tax						\$0.64		
Electric Service Cost							\$25.61	
Other Fees and Charges								
Electric Late Payment Fee						\$5.00		
Total Other Fees and Charges							\$5.00	
Current Month's Electric Charges							\$30.61	

Tampa Electric Usage History

Kilowatt-Hours Per Day (Average)



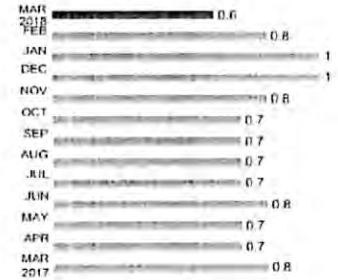
Account: 211015069092
Statement Date: 04/02/18

Details of Charges – Service from 02/15/18 to 03/15/18

Service for: 11605 PANTHER TRACE BLVD, RIVERVIEW, FL 33579-0000

Rate Schedule: General Service - Non Demand

Meter Number	Read Date	Current Reading	-	Previous Reading	=	Total Used	Multiplier	Billing Period
B55453	03/15/18	4,658		4,640		18 kWh	1	29 Days
Basic Service Charge						\$19.94	Tampa Electric Usage History Kilowatt-Hours Per Day (Average)	
Energy Charge						18 kWh @ \$0.06184/kWh \$1.11		
Fuel Charge						18 kWh @ \$0.03132/kWh \$0.56		
Florida Gross Receipt Tax						\$0.55		
Electric Service Cost							\$22.16	
Other Fees and Charges								
Electric Late Payment Fee						\$5.00		
Total Other Fees and Charges							\$5.00	
Current Month's Electric Charges							\$27.16	





Account: 211015068979
Statement Date: 04/02/18

Details of Charges – Service from 02/15/18 to 03/15/18

Service for: 11693 PANTHER TRACE BLVD, RIVERVIEW, FL 33579-0000

Rate Schedule: General Service - Non Demand

Meter Number	Read Date	Current Reading	Previous Reading	=	Total Used	Multiplier	Billing Period
B55461	03/15/18	5,232	5,196		36 kWh	1	29 Days
Basic Service Charge					\$19.94	Tampa Electric Usage History Kilowatt-Hours Per Day (Average)	
Energy Charge					36 kWh @ \$0.06184/kWh		
Fuel Charge					36 kWh @ \$0.03132/kWh		
Florida Gross Receipt Tax					\$0.60		
Electric Service Cost						\$23.90	
Other Fees and Charges							
Electric Late Payment Fee					\$5.00	\$5.00	
Total Other Fees and Charges							
Current Month's Electric Charges						\$28.90	

00000001-00000008- Page 15 of 32

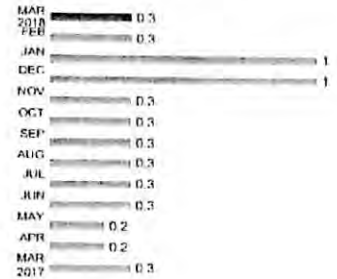
Account: 211015068862
Statement Date: 04/02/18

Details of Charges – Service from 02/15/18 to 03/15/18

Service for: 11794 PANTHER TRACE BLVD, RIVERVIEW, FL 33579-0000

Rate Schedule: General Service - Non Demand

Meter Number	Read Date	Current Reading	-	Previous Reading	=	Total Used	Multiplier	Billing Period
B55404	03/15/18	3,666		3,657		9 kWh	1	29 Days
Basic Service Charge						\$19.94	Tampa Electric Usage History Kilowatt-Hours Per Day (Average)	
Energy Charge						9 kWh @ \$0.06184/kWh \$0.56		
Fuel Charge						9 kWh @ \$0.03132/kWh \$0.28		
Florida Gross Receipt Tax						\$0.53		
Electric Service Cost								
Other Fees and Charges								
Electric Late Payment Fee						\$5.00		
Total Other Fees and Charges								
Current Month's Electric Charges								
							\$21.31	
							\$5.00	
							\$26.31	





Account: 211015068748
Statement Date: 04/02/18

Details of Charges – Service from 02/15/18 to 03/16/18

Service for: 11807 PANTHER TRACE BL, RIVERVIEW, FL 33579-0000

Rate Schedule: General Service - Non Demand

Meter Number	Read Date	Current Reading	-	Previous Reading	=	Total Used	Multiplier	Billing Period
B55401	03/16/18	3,749		3,743		6 kWh	1	30 Days
Basic Service Charge						\$19.94		
Energy Charge						6 kWh @ \$0.06184/kWh		
Fuel Charge						6 kWh @ \$0.03132/kWh		
Florida Gross Receipt Tax						\$0.53		
Electric Service Cost							\$21.03	
Other Fees and Charges								
Electric Late Payment Fee						\$5.00		
Total Other Fees and Charges							\$5.00	
Current Month's Electric Charges							\$26.03	

Tampa Electric Usage History
Kilowatt-Hours Per Day (Average)



00000001-00000008-Page 17 of 32

Account: 211015068615
Statement Date: 04/02/18

Details of Charges – Service from 02/15/18 to 03/15/18

Service for: PANTHER TRCE, PH 2B2, RIVERVIEW, FL 33569-0000

Rate Schedule: Lighting Service

Lighting Service Items LS-1 (Bright Choices) for 29 days

Lighting Energy Charge	2728 kWh @ \$0.03207/kWh	\$87.49
Fixture & Maintenance Charge	62 Fixtures	\$677.04
Lighting Pole / Wire	62 Poles	\$918.84
Lighting Fuel Charge	2728 kWh @ \$0.03095/kWh	\$84.43
Florida Gross Receipt Tax		\$4.41
Lighting Charges		\$1,772.21
Current Month's Electric Charges		\$1,772.21



Account: 211015068508
Statement Date: 04/02/18

Details of Charges – Service from 02/15/18 to 03/15/18

Service for: 2A2 N, RIVERVIEW, FL 33569-0000

Rate Schedule: Lighting Service

Lighting Service Items LS-1 (Bright Choices) for 29 days

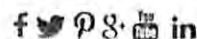
Lighting Energy Charge	1936 kWh @ \$0.03207/kWh	\$62.09
Fixture & Maintenance Charge	44 Fixtures	\$480.48
Lighting Pole / Wire	44 Poles	\$652.08
Lighting Fuel Charge	1936 kWh @ \$0.03095/kWh	\$59.92
Florida Gross Receipt Tax		\$3.13
Lighting Charges		\$1,257.70
Current Month's Electric Charges		\$1,257.70

00000001-0000010-Page 19 of 32



ACCOUNT INVOICE

tampaelectric.com



Account: 211015068375
Statement Date: 04/02/18

Details of Charges – Service from 02/15/18 to 03/15/18

Service for: PANTHER TRACE BLVD, RIVERVIEW, FL 33579-0000

Rate Schedule: Lighting Service

Lighting Service Items LS-1 (Bright Choices) for 29 days

Lighting Energy Charge	2288 kWh @ \$0.03207/kWh	\$73.38
Fixture & Maintenance Charge	52 Fixtures	\$567.84
Lighting Pole / Wire	52 Poles	\$770.64
Lighting Fuel Charge	2288 kWh @ \$0.03095/kWh	\$70.81
Florida Gross Receipt Tax		\$3.70
Lighting Charges		\$1,486.37
Current Month's Electric Charges		\$1,486.37

00000001-0000010-Page 20 of 32

Account: 211015068243
Statement Date: 04/02/18



Details of Charges – Service from 02/15/18 to 03/15/18

Service for: 2A 1, RIVERVIEW, FL 33569-0000

Rate Schedule: Lighting Service

Lighting Service Items LS-1 (Bright Choices) for 29 days

Lighting Energy Charge	1760 kWh @ \$0.03207/kWh	\$56.44
Fixture & Maintenance Charge	40 Fixtures	\$436.80
Lighting Pole / Wire	40 Poles	\$592.80
Lighting Fuel Charge	1760 kWh @ \$0.03095/kWh	\$54.47
Florida Gross Receipt Tax		\$2.84
Lighting Charges		\$1,143.35

Current Month's Electric Charges **\$1,143.35**

0000001-0000011- Page 21 of 32

Account: 211015068128
Statement Date: 04/02/18

Details of Charges – Service from 02/15/18 to 03/15/18

Service for: PANTHER TRACE 2A2 SW, RIVERVIEW, FL 33569-0000

Rate Schedule: Lighting Service

Lighting Service Items LS-1 (Bright Choices) for 29 days

Lighting Energy Charge	2552 kWh @ \$0.03207/kWh	\$81.84
Fixture & Maintenance Charge	58 Fixtures	\$633.36
Lighting Pole / Wire	58 Poles	\$859.56
Lighting Fuel Charge	2552 kWh @ \$0.03095/kWh	\$78.98
Florida Gross Receipt Tax		\$4.12
Lighting Charges		\$1,657.86
Current Month's Electric Charges		\$1,657.86

00000001-0000011-Page 22 of 32



Account: 211015068003
Statement Date: 04/02/18

Details of Charges – Service from 02/15/18 to 03/15/18

Service for: PANTHER TRACE 2A2 SE, RIVERVIEW, FL 33569-0000

Rate Schedule: Lighting Service

Lighting Service Items LS-1 (Bright Choices) for 29 days

Lighting Energy Charge	1408 kWh @ \$0.03207/kWh	\$45.15
Fixture & Maintenance Charge	32 Fixtures	\$349.44
Lighting Pole / Wire	32 Poles	\$474.24
Lighting Fuel Charge	1408 kWh @ \$0.03095/kWh	\$43.58
Florida Gross Receipt Tax		\$2.28
Lighting Charges		\$914.69

Current Month's Electric Charges **\$914.69**

00000001-0000012-Page 23 of 32

Account: 211015067914
Statement Date: 04/02/18

Details of Charges – Service from 02/15/18 to 03/15/18

Service for: PANTHER TRACE 2A1, RIVERVIEW, FL 33569-0000

Rate Schedule: Lighting Service

Lighting Service Items LS-1 (Bright Choices) for 29 days

Lighling Energy Charge	1496 kWh @ \$0.03207/kWh	\$47.98
Fixture & Maintenance Charge	34 Fixtures	\$371.28
Lighting Pole / Wire	34 Poles	\$503.88
Lighting Fuel Charge	1496 kWh @ \$0.03095/kWh	\$46.30
Florida Gross Receipt Tax		\$2.42
Lighting Charges		\$971.86
Current Month's Electric Charges		\$971.86

00000001-0000012-Page 24 of 32



Account: 211015067799
Statement Date: 04/02/18

Details of Charges – Service from 02/15/18 to 03/15/18

Service for: PANTHER TRACE 2A SW BL, RIVERVIEW, FL 33569-0000

Rate Schedule: Lighting Service

Lighting Service Items LS-1 (Bright Choices) for 29 days

Lighting Energy Charge	968 kWh @ \$0.03207/kWh	\$31.04
Fixture & Maintenance Charge	22 Fixtures	\$240.24
Lighting Pole / Wire	22 Poles	\$326.04
Lighting Fuel Charge	968 kWh @ \$0.03095/kWh	\$29.96
Florida Gross Receipt Tax		\$1.56
Lighting Charges		\$628.84
Current Month's Electric Charges		\$628.84

00000001-0000013-Page 25 of 32

Account: 211015067682
Statement Date: 04/02/18

Details of Charges – Service from 02/14/18 to 03/13/18

Service for: 11518 NEWGATE CREST DR, B, RIVERVIEW, FL 33569-0000

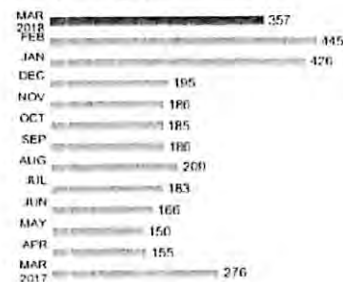
Rate Schedule: General Service Demand - Standard

Meter Location: # B

Meter Number	Read Date	Current Reading	-	Previous Reading	=	Total Used	Multiplier	Billing Period
L08747	03/13/18	91,706		81,703		10,003 kWh	1	28 Days
L08747	03/13/18	21		0		21 kW	1	28 Days
Basic Service Charge						\$33.24		
Demand Charge						21 kW @ \$10.25000/kW	\$215.25	
Energy Charge						10,003 kWh @ \$0.01754/kWh	\$175.45	
Fuel Charge						10,003 kWh @ \$0.03132/kWh	\$313.29	
Capacity Charge						21 kW @ \$0.20000/kW	\$4.20	
Energy Conservation Charge						21 kW @ \$0.87000/kW	\$18.27	
Environmental Cost Recovery						10,003 kWh @ \$0.00342/kWh	\$34.21	
Florida Gross Receipt Tax						\$20.36		
Electric Service Cost							\$814.27	
Other Fees and Charges								
Electric Late Payment Fee						\$15.91		
Total Other Fees and Charges							\$15.91	
Current Month's Electric Charges							\$830.18	

Tampa Electric Usage History

Kilowatt-Hours Per Day
(Average)



Billing Demand
(Kilowatts)



Load Factor
(Percentage)





Account: 211015067542
Statement Date: 04/02/18

Details of Charges – Service from 02/15/18 to 03/15/18

Service for: 11901 1/7 PANTHER TRACE BL, RIVERVIEW, FL 33569-0000

Meter Location: PUMP/LIFT STATION

Rate Schedule: General Service - Non Demand

Meter Number	Read Date	Current Reading	-	Previous Reading	=	Total Used
A77719	03/15/18	94,607		94,607		0 kWh
Basic Service Charge						\$19.94
Florida Gross Receipt Tax						\$0.51
Electric Service Cost						\$20.45
Other Fees and Charges						
Electric Late Payment Fee						\$5.00
Total Other Fees and Charges						\$5.00
Current Month's Electric Charges						\$25.45

Multiplier 1
Billing Period 29 Days

Tampa Electric Usage History

Kilowatt-Hours Per Day (Average)



00000001-0000014-Page 27 of 32

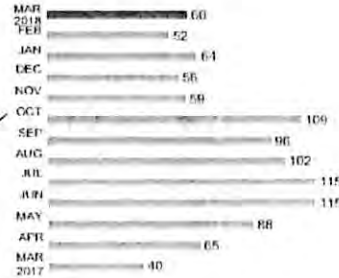
Account: 211015067419
Statement Date: 04/02/18

Details of Charges – Service from 02/15/18 to 03/16/18

Service for: 11518 NEWGATE CREST DR, A, RIVERVIEW, FL 33569-0000

Rate Schedule: General Service - Non Demand

Meter Location: # A

Meter Number	Read Date	Current Reading	-	Previous Reading	=	Total Used	Multiplier	Billing Period
E99321	03/16/18	56,651		54,842		1,809 kWh	1	30 Days
Basic Service Charge						\$19.94	Tampa Electric Usage History Kilowatt-Hours Per Day (Average) 	
Energy Charge						1,809 kWh @ \$0.06184/kWh		
Fuel Charge						1,809 kWh @ \$0.03132/kWh		
Florida Gross Receipt Tax						\$4.83		
Electric Service Cost						\$193.30		
Other Fees and Charges							\$5.00	
Electric Late Payment Fee						\$5.00		
Total Other Fees and Charges								
Current Month's Electric Charges						\$198.30		



Account: 211015067294
Statement Date: 04/02/18

Details of Charges – Service from 02/15/18 to 03/19/18

Service for: 11518 NEW GATE CREST DR IRR, RIVERVIEW, FL 33569-0000

Rate Schedule: General Service - Non Demand

Meter Number	Read Date	Current Reading	-	Previous Reading	=	Total Used	Multiplier	Billing Period
G29894	03/19/18	56,255		54,504		1,751 kWh	1	33 Days

Basic Service Charge

\$19.94

Energy Charge

1,751 kWh @ \$0.06184/kWh

\$108.28

Fuel Charge

1,751 kWh @ \$0.03132/kWh

\$54.84

Florida Gross Receipt Tax

\$4.69

Electric Service Cost

\$187.75

Other Fees and Charges

Electric Late Payment Fee

\$5.00

Total Other Fees and Charges

\$5.00

Current Month's Electric Charges

\$192.75

Tampa Electric Usage History

Kilowatt-Hours Per Day
(Average)



Account: 211003406793
Statement Date: 04/02/18

Details of Charges – Service from 02/15/18 to 03/19/18

Service for: 11590 PANTHER TRACE BLVD, RIVERVIEW, FL 33579-0000

Rate Schedule: General Service - Non Demand

Meter Number	Read Date	Current Reading	-	Previous Reading	=	Total Used	Multiplier	Billing Period
B22364	03/19/18	22,370		18,654		3,716 kWh	1	33 Days
Basic Service Charge						\$19.94	Tampa Electric Usage History Kilowatt-Hours Per Day (Average)	
Energy Charge						3,716 kWh @ \$0.06184/kWh \$229.80		
Fuel Charge						3,716 kWh @ \$0.03132/kWh \$116.39		
Florida Gross Receipt Tax						\$9.39		
Electric Service Cost						\$375.52		
Current Month's Electric Charges						\$375.52		
Total Current Month's Charges						\$14,114.04		



Vanguard Cleaning Systems of Tampa Bay
12108 North 56th St.
Suite 8
Tampa, FL. 33617
Tampa, FL 33617

Invoice

Panther Trace II CDD
C/O DPFG
1060 Maitland Center Commons Blvd #340
Maitland, FL 32751

Date	Invoice #
2/28/2018	76513
P.O. No.	Due Date
	3/30/2018

Description	Qty	Rate	Amount
Additional Clean in February and March	2	50.00	100.00T
		Subtotal	\$100.00
		Sales Tax (0.0%)	\$0.00
		Total	\$100.00

Phone #	813-849-6500 ext.207
E-mail	
ALPerkins@vanguardcleaning.com	

Vanguard Cleaning Systems of Tampa Bay
12108 North 56th St.
Suite 8
Tampa, FL. 33617
Tampa, FL 33617

Invoice

Panther Trace II CDD
C/O DPFG
1060 Maitland Center Commons Blvd #340
Maitland, FL 32751

Date	Invoice #
4/1/2018	76853
P.O. No.	Due Date
	5/1/2018

Description	Qty	Rate	Amount
April (4/1/2018 - 4/30/2018) Monthly Service Charge	1	325.00	325.00T
		Subtotal	\$325.00
		Sales Tax (0.0%)	\$0.00
		Total	\$325.00

Phone #

813-849-6500 ext.207

E-mail

ALPerkins@vanguardcleaning.com

Jayman Enterprises, LLC

1020 HILL FLOWER DR
Brooksville, FL 34604

Phone # (813)333-3008 jaymanenterprises@live.com
www.jaymanenterprises.com

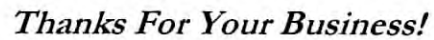
Invoice

Date	Invoice #
4/1/2018	386

Bill To
Anna Ramirez Panther Trace 2 11518 Newgate Crest Dr. Riverview, Fl. 33569

P O. No.	Terms	Project

Quantity	Description	Rate	Amount
4.5	Dog Service March 3/1/18 - 3/31/18	120.00	540.00
All work is complete!		Total	\$540.00



EXPIRATION DATE

TECHNICIAN	JOB SITE	INSTALLATION DATE	PAYMENT TERMS	DUE DATE
Lance Wood		04-07-2018		
QTY	ITEM #	DESCRIPTION	UNIT PRICE	LINE TOTAL
2		Pool filter grid change		\$2520.00
		Hours labor		\$170.00
			SUBTOTAL	
			SALES TAX	
			TOTAL	\$2690.00

Comments:



Thanks For Your Business!

QUOTE

Zebra Cleaning Team, Inc.
P.O. BOX 3456
APOLLO BEACH, FL 33572
813-458-2942

DATE: FEBRUARY 26, 2018
INVOICE #

EXPIRATION DATE

TO Panther Trace II CDD

TECHNICIAN	JOB SITE	INSTALLATION DATE	PAYMENT TERMS	DUE DATE
Lance Wood				
QTY	ITEM #	DESCRIPTION	UNIT PRICE	LINE TOTAL
126		Filter grids	20.00	\$2520.00
2		Hours labor	85.00	\$170.00

SUBTOTAL
SALES TAX
TOTAL \$2690.00

Comments: We need to change out the filter grids. They are changed out every 2 1/2 to 3 years. The filter grids are basically like changing out filters in your house or car. I dropped the grid price from 21.00 to 20.00 because you have so many and this should save you an additional 126.00.



EXPIRATION DATE

[illegible]

Comments:



Landscape Professionals
Post Office Box 849 || Bunnell, FL 32110
Tel 386.437.6211 || Fax 386.586.1285

Invoice

Invoice: INV-0000208412
Invoice Date: March 31, 2018

Account: 13858
PO Number:

Bill To:

Panther Trace II CDD
c/o DPGF, Inc.
1060 Maitland Center Commons Blvd.
Suite 340
Maitland, FL 32751

Remit To:

Yellowstone Landscape
PO Box 101017
Atlanta, GA 30392-1017

Terms: NET 30
Project Number: 10151062.203.00037
Project Name: Electrical East Monument
Panther Trace II CDD CAS

Invoice Due Date: April 30, 2018
Invoice Amount: \$4,285.71

DESCRIPTION	QUANTITY	UNIT PRICE	TOTAL PRICE
Install AMP Electrical Service East Monument	1.00	4,285.71	\$4,285.71

Invoice Total \$4,285.71



Landscape Professionals
Post Office Box 849 || Bunnell, FL 32110
Tel 386.437.6211 || Fax 386.586.1285

Invoice

Invoice: INV-0000206804
Invoice Date: March 31, 2018

Account: 13858
PO Number:

Bill To:

Panther Trace II CDD
c/o DPGF, Inc.
1060 Maitland Center Commons Blvd.
Suite 340
Maitland, FL 32751

Remit To:

Yellowstone Landscape
PO Box 101017
Atlanta, GA 30392-1017

Terms: NET 30
Project Number: 10151062.203.00038
Project Name: Damaged Turf Replacement
Panther Trace II CDD CAS

Invoice Due Date: April 30, 2018
Invoice Amount: \$204.00

Install Of Sod 11520 Balintore Drive	1.00	204.00	\$204.00

Invoice Total \$204.00



Landscape Professionals
Post Office Box 849 || Bunnell, FL 32110
Tel 386.437.6211 || Fax 386.586.1285

Invoice

Invoice: INV-0000209196
Invoice Date: March 31, 2018

Account: 13858
PO Number:

Bill To:
Panther Trace II CDD
c/o DPFG, Inc.
1060 Maitland Center Commons Blvd.
Suite 340
Maitland, FL 32751

Remit To:
Yellowstone Landscape
PO Box 101017
Atlanta, GA 30392-1017

Terms: NET 30
Project Number: 10151062.203.00039
Project Name: Spring Flower Chageout
Panther Trace II CDD CAS

Invoice Due Date: April 30, 2018
Invoice Amount: \$1,395.25

Quantity	Unit	Rate	Amount
1.00		1,395.25	\$1,395.25
Spring Flower Change Out			

Invoice Total \$1,395.25



CBM Services Group Inc.
200 Oak Drive, Ste 201
Syosset, NY 11791
516-364-0957

Invoice

Date	Invoice #
4/9/2018	16894

Bill To
PANTHER TRACE II C/O DPEFG 250 International Parkway, Suite 250 Lake Mary, FL 32746

Ship To
11518 NEWGATE CREST DRIVE RIVERVIEW, FL

P.O. Number	Terms	Service Date		Account #	Due Date	Work Order Number
	Due on receipt	4/9/2018			4/9/2018	14562
Service	Description			Quantity	Price	Amount
SECURITY GUARD S...	PROVIDE SECURITY GUARD SERVICES ON 4/2/18 - 4/8/18; 38.5 HOURS @ \$13.50/HOUR.			38.5	13.50	519.75
					Total	\$519.75



CBM Services Group Inc.
200 Oak Drive, Ste 201
Syosset, NY 11791
516-364-0957

Invoice

Date	Invoice #
4/16/2018	16907

Bill To
PANTHER TRACE II C/O DPFG 250 International Parkway, Suite 250 Lake Mary, FL 32746

Ship To
11518 NEWGATE CREST DRIVE RIVERVIEW, FL

P.O. Number	Terms	Service Date		Account #	Due Date	Work Order Number
	Due on receipt	4/16/2018			4/16/2018	14567
Service	Description			Quantity	Price	Amount
SECURITY GUARD S...	PROVIDE SECURITY GUARD SERVICES ON 4/9/18 - 4/15/18: 41.5 HOURS @ \$13.50/HOUR.				560.25	560.25

INVOICE NO.	PAGE
00199624	1
INVOICE DATE	
03/21/18	

BILL TO:

PANTHER TRACE CLUBHOUSE
 C/O DPGF
 1060 MAITLAND CENTER COMMONS BLVD, S
 MAITLAND, FL 32751

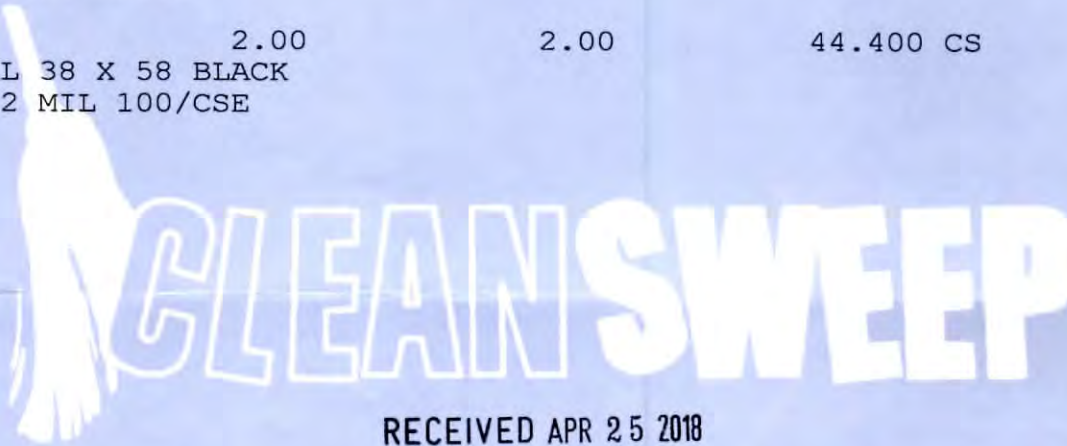
SHIP TO:

PANTHER TRACE II
 11518 NEWGATE CREST DRIVE
 RIVERVIEW, FL 33569

ORDER NO.	ORDER DATE	CUSTOMER NO.	LOC	SALES REP.
201452	03/19/18	PTC101	TP	PJB

CUSTOMER P.O. NUMBER	JOB NUMBER	SHIP VIA	PPD / COL
		OUR TRUCK	

ITEM NUMBER DESCRIPTION	QTY. ORDERED	QTY. SHIPPED/RETURNED QTY. BACKORDERED	UNIT PRICE	UOM DISC %	EXTENDED PRICE
LG-BWK6170 ZZTISSUE TOILET 1 PLY SPRING 1000 1PLY 96RL/CSE	1.00	1.00	64.750	CS	64.75
PH-1000203 TOWEL MULTIFOLD WHITE	2.00	2.00	22.500	CS	45.00
LG-PNL523 LINER 55 GAL 38 X 58 BLACK XHVY BLACK 2 MIL 100/CSE	2.00	2.00	44.400	CS	88.80



ALL OVERDUE ACCOUNTS WILL BE LIABLE FOR ALL LEGAL AND COLLECTION FEES.

COMMENTS:

TERMS:

NET 30

SALE AMOUNT	198.55
MISC. CHARGES	.00
SHIPPING/HANDLING	.00
SALES TAX	.00
TOTAL	198.55
AMOUNT RECEIVED	.00
BALANCE DUE	198.55
RECEIVED BY:	

Jayman Enterprises, LLC

1020 HILL FLOWER DR
Brooksville, FL 34604

Phone # (813)333-3008 jaymanenterprises@live.com
www.jaymanenterprises.com

Estimate

Date	Estimate #
4/19/2018	300

Name / Address
Anna Ramirez Panther Trace 2 11518 Newgate Crest Dr. Riverview, Fl. 33569

Project

Description	Qty	Rate	Total
Replace hinges on Tennis court door with self closing hinges		350.00	350.00
pay from estimate per ANNA =			
Client Signature		Total	\$350.00

Straley Robin Vericker

1510 W. Cleveland Street

Tampa, FL 33606

Telephone (813) 223-9400 * Facsimile (813) 223-5043

Federal Tax Id. - 20-1778458

Panther Trace II Community Development District

c/o DPFG Management & Consulting, LLC

250 International Parkway

Suite 280

Lake Mary, FL 32746

April 18, 2018

Client: 001036

Matter: 000001

Invoice #: 15616

Page: 1

RE: General Matters

For Professional Services Rendered Through April 15, 2018

SERVICES

Date	Person	Description of Services	Hours	
3/26/2018	LB	REVIEW SPREADSHEET FROM DPFG RE BUDGET MEETING AND BUDGET HEARING DATES; PREPARE DRAFT RESOLUTION APPROVING PROPOSED BUDGET AND SETTING PUBLIC HEARING ON THE BUDGET.	0.5	
4/2/2018	JMV	PREPARE RESOLUTION FOR CDD BOARD MEETING.	0.6	
4/2/2018	LB	FINALIZE RESOLUTION ADOPTING PROPOSED BUDGET AND SETTING PUBLIC HEARING; PREPARE EMAIL TO R. RIVAS TRANSMITTING SAME.	0.2	
Total Professional Services			1.3	\$270.00

PERSON RECAP

Person		Hours	Amount
JMV	John M. Vericker	0.6	\$165.00
LB	Lynn Butler	0.7	\$105.00

April 18, 2018

Client: 001036

Matter: 000001

Invoice #: 15616

Page: 2

Total Services	\$270.00	
Total Disbursements	\$0.00	
Total Current Charges		\$270.00

PAY THIS AMOUNT

\$270.00

Please Include Invoice Number on all Correspondence



YELLOWSTONE
LANDSCAPE

Landscape Professionals
Post Office Box 849 || Bunnell, FL 32110
Tel 386.437.6211 || Fax 386.586.1285

Invoice

Invoice: INV-0000204903
Invoice Date: March 1, 2018

Account: 13858
PO Number:

Bill To:

Panther Trace II CDD
c/o DPFG, Inc.
1060 Maitland Center Commons Blvd.
Suite 340
Maitland, FL 32751

Remit To:

Yellowstone Landscape
PO Box 101017
Atlanta, GA 30392-1017

Project Number: 10151062.103
Property Name: Panther Trace II CDD
Terms: NET 30

Invoice Due Date: March 31, 2018
Invoice Amount: \$12,257.00
Month of Service: March 2018

Monthly Landscape Maintenance

12,257.00

Invoice Total 12,257.00

RECEIVED APR 1 2018

Should you have any questions or inquiries please call (386) 437-6211.



Landscape Professionals
Post Office Box 849 || Bunnell, FL 32110
Tel 386.437.6211 || Fax 386.586.1285

Invoice

Invoice: INV-0000208532
Invoice Date: March 31, 2018

Account: 13858
PO Number:

Bill To:

Panther Trace II CDD
c/o DPGF, Inc.
1060 Maitland Center Commons Blvd.
Suite 340
Maitland, FL 32751

Remit To:

Yellowstone Landscape
PO Box 101017
Atlanta, GA 30392-1017

Terms: NET 30
Project Number: 10151062.203.00041
Project Name: Mainline Rainbird
Panther Trace II CDD CAS

Invoice Due Date: April 30, 2018
Invoice Amount: \$1,032.39

Item Description	Quantity	Unit Price	Total Price
Repair Of Main Line Rainbird	1.00	1,032.39	\$1,032.39

Invoice Total \$1,032.39

Should you have any questions or inquiries please call (386) 437-6211.



YELLOWSTONE
LANDSCAPE

Landscape Professionals
Post Office Box 849 || Bunnell, FL 32110
Tel 386.437.6211 || Fax 386.586.1285

Invoice

Invoice: INV-0000210763
Invoice Date: April 30, 2018

Account: 13858
PO Number:

Bill To:

Panther Trace II CDD
c/o DPGF, Inc.
1060 Maitland Center Commons Blvd.
Suite 340
Maitland, FL 32751

Remit To:

Yellowstone Landscape
PO Box 101017
Atlanta, GA 30392-1017

Terms: NET 30
Project Number: 10151062.203.00040
Project Name: Church Access Design
Panther Trace II CDD CAS

Invoice Due Date: May 30, 2018
Invoice Amount: \$3,110.00

Item Description	Quantity	Unit Price	Total Price
Install Of Plants, Grass & Pine Bark Church Access	1.00	3,110.00	\$3,110.00

Invoice Total \$3,110.00

Should you have any questions or inquiries please call (386) 437-6211.

EXHIBIT 9.

These filings are normally limited to disclosure of specific information required by regulation. By complying with these requirements the reporting parties do not represent that the information provided is sufficiently complete to afford a satisfactory basis for an investment decision.

This filing will not be amended or updated to reflect subsequent events. Investors should supplement the information herein by taking into account previous filings, particularly that of the Final Official Statement and subsequent filings, particularly those involving "Event Notices".

PANTHER TRACE II
COMMUNITY DEVELOPMENT DISTRICT
Special Assessment Revenue Refunding Bonds, Series 2014
CUSIP #69866CAD3, CAE1, CAF8, CAG6, CAH4, CAJ0, CAK5, CAM3,
CAN1, CAP6, CAQ4, CAR2

Issuer Annual Continuing
Disclosure Report

Fiscal Year Ended
September 30, 2017

March 2018

PANTHER TRACE II
COMMUNITY DEVELOPMENT DISTRICT
Special Assessment Revenue Refunding Bonds, Series 2014
Issuer Annual Continuing Disclosure Report
Fiscal Year 2017

- I. The amount of Assessments levied for the most recent Fiscal Year (tax year 2016)
- ◇ **\$888,858.00 levied on the tax roll (gross)**
 - ◇ **\$0 levied off the tax roll**
- II. The amount of Assessments collected from the property owners during the most recent Fiscal Year (tax year 2016).
- ◇ **\$818,606.00 collected on the tax roll (net of fees and discounts)**
 - ◇ **\$0 collected off the tax roll**
- III. If available, the amount of delinquencies greater than 150 days, and, in the event that delinquencies amount to more than ten percent (10%) of the amounts of Assessments due in any year, a list of delinquent property owners (tax year 2016).
- ◇ **\$20,234.00– on the tax roll (includes O&M)**
- IV. If available, the amount of tax certificates sold, if any, and the balance, if any, remaining for sale from the most recent Fiscal Year.
- ◇ **\$11,142.00 sold (includes O&M)**
 - ◇ **\$0.00 remaining for sale**
- V. All fund balances in all Funds and Accounts for the Series 2014 Bonds. The Issuer shall provide any Bondholder with this information more frequently than annually within thirty (30) days of the written request of the Bondholder.

September 30, 2017:

	<u>Account Balance</u>
Panther Trace II 2014 PREPMT	\$31.18
Panther Trace II 2014 RSV INS	\$491,328.75
Panther Trace II 2014 Cash	\$327,552.52
Panther Trace II 2014 REV	\$254,731.47

PANTHER TRACE II
COMMUNITY DEVELOPMENT DISTRICT
Special Assessment Revenue Refunding Bonds, Series 2014
Issuer Annual Continuing Disclosure Report
Fiscal Year 2017

VI. The total amount of Series 2014 Bonds Outstanding.

◇ Bonds Outstanding as of 9/30/17	
◇ Series 2014	\$10,535,000

VII. Information to be provided to the Bondholders indicating the total amount of principal and interest to be paid in the current year (Fiscal Year 2018).

Series 2014	
◇ Principal	\$440,000.00
◇ Interest	\$381,682.00

VIII. The most recent audited financial statements of the Issuer.

◇ **To be provided under separate cover when they become available.**

EXHIBIT 10.



Craig Latimer
Supervisor of Elections

Our Vision: To be the best place in America to vote

GOVERNOR'S
STERLING
AWARD
RECIPIENT

April 20, 2018

Rebecca Rivas
15310 Amberly Drive, Suite 175
Tampa, FL 33647

Dear Rebecca Rivas,

As per F.S. 190.006, you'll find the number of qualified registered electors for your Community Development District as of April 15, 2018, listed below.

Community Development District	Number of Registered Electors
Panther Trace II CDD	2244

We ask that you respond to our office with a current list of CDD office holders by **June 1, 2018**, and that you update us throughout the year if there are changes. This will enable us to provide accurate information to potential candidates during filing and qualifying periods.

Please note it is the responsibility of each district to keep our office updated with current district information. If you have any questions, please do not hesitate to contact me at (813) 384-3944 or ewhite@hcsoe.org.

Respectfully,

Enjoli White
Candidate Services Liaison

EXHIBIT 11.

RESOLUTION 2018-05

A RESOLUTION OF THE BOARD OF SUPERVISORS OF THE PANTHER TRACE II COMMUNITY DEVELOPMENT DISTRICT APPROVING A PROPOSED BUDGET FOR FISCAL YEAR 2018/2019; SETTING A PUBLIC HEARING THEREON PURSUANT TO FLORIDA LAW; ADDRESSING TRANSMITTAL, POSTING AND PUBLICATION REQUIREMENTS; AND PROVIDING FOR AN EFFECTIVE DATE.

WHEREAS, the District Manager prepared and submitted to the Board of Supervisors (“Board”) of the Panther Trace II Community Development District (“District”) prior to June 15, 2018, a proposed operations and maintenance budget for Fiscal Year 2018/2019; and

WHEREAS, the Board has considered the proposed budget and desires to set the required public hearing thereon.

NOW, THEREFORE, BE IT RESOLVED BY THE BOARD OF SUPERVISORS OF THE PANTHER TRACE II COMMUNITY DEVELOPMENT DISTRICT:

1. **BUDGET APPROVED.** The operating budget proposed by the District Manager for Fiscal Year 2018/2019 attached hereto as **Exhibit A** is hereby approved as the basis for conducting a public hearing to adopt said budget.

2. **SETTING A PUBLIC HEARING.** The public hearing on said approved budget is hereby declared and set for the following date, hour and location:

DATE: July 23, 2018

HOUR: 6:30 p.m.

LOCATION: Panther Trace II Clubhouse
11518 Newgate Crest Drive
Riverview, Florida

3. **TRANSMITTAL OF BUDGET TO LOCAL GENERAL PURPOSE GOVERNMENT.** The District Manager is hereby directed to submit a copy of the proposed budget to Hillsborough County at least 60 days prior to the hearing date set above.

4. **POSTING OF BUDGETS.** In accordance with Section 189.016, Florida Statutes, the District's Secretary is further directed to post the approved proposed budget on the District's website at least two days before the budget hearing date as set forth in section 2.

5. **PUBLICATION OF NOTICE.** Notice of this public hearing shall be published in the manner prescribed by Florida law.

6. **EFFECTIVE DATE.** This Resolution shall take effect immediately upon adoption.

PASSED AND ADOPTED THIS 21ST DAY OF MAY, 2018.

ATTEST:

**PANTHER TRACE II COMMUNITY
DEVELOPMENT DISTRICT**

Signature

Signature

Printed Name

Printed Name

Title:

- ☐ Secretary
- ☐ Assistant Secretary

Title:

- ☐ Chair of the Board of Supervisors
- ☐ Vice Chair of the Board of Supervisors

Exhibit A: Proposed FY 2018/2019 Budget

STATEMENT 1
PANTHER TRACE II CDD
ADOPTED BUDGET FY 2019
GENERAL FUND (O&M)

	FY 2013 ACTUAL	FY 2014 ACTUAL	FY 2015 ACTUAL	FY 2016 ACTUAL	FY 2017 ACTUAL	FY 2018 ADOPTED	FY 2018 YTD - FEB	FY 2019 PROPOSED	2018-2019 VARIANCE
REVENUE									
ASSESSMENTS - ON ROLL (Reflected net for FY 2017)	629,021	722,463	782,460	801,379	865,503	840,213	837,908	907,430	67,217
ASSESSMENTS - DEVELOPER	881	-	-	-	-	-	-	-	-
INTEREST REVENUE	-	772	1,390	1,799	4,200	300	2,134	300	-
RENTAL INCOME	-	-	11,856	8,045	9,497	3,000	2,047	3,000	-
MISCELLANEOUS REVENUE (Rentals, Access Keys)	738	13,849	798	918	1,442	-	582	-	-
FUND BALANCE FORWARD (RESERVE CONTRIBUTIONS)	-	-	-	-	-	-	-	36,550	36,550
DEVELOPER CONTRIBUTION	8,390	-	130,000	-	-	-	-	-	-
DISCOUNT (4%)	-	-	-	-	-	-	-	-	-
TOTAL REVENUES	639,030	737,084	926,503	812,141	880,642	843,513	842,671	947,280	103,767
EXPENDITURES									
ADMINISTRATIVE:									
BOARD OF SUPERVISORS PAYROLL	10,400	13,800	11,400	10,256	9,865	12,000	2,000	12,000	-
PAYROLL TAXES	504	1,511	1,248	3,386	741	918	153	918	-
PAYROLL SERVICES FEE	224	1,209	642	1,301	485	1,300	648	1,300	-
TRAVEL PER DIEM	155	119	-	-	-	250	-	250	-
MANAGEMENT CONSULTING SERVICES	75,788	48,000	48,000	48,000	48,000	48,000	20,000	48,000	-
OFFICE SUPPLIES	8	1,417	8	150	241	150	169	150	-
BANK FEES	411	120	15	30	181	200	-	200	-
MISCELLANEOUS (Postage and copies)	607	-	705	705	-	-	112	-	-
MASS MAILING	1,947	-	-	1,073	-	2,000	-	2,000	-
AUDITING	8,250	3,800	3,000	4,615	3,715	4,200	-	4,200	-
REGULATORY AND PERMIT FEES	200	200	175	175	175	175	175	175	-
LEGAL ADVERTISEMENTS	1,621	1,422	277	1,246	1,296	1,000	348	1,000	-
ENGINEERING SERVICES	11,176	3,231	2,267	3,158	1,582	6,000	1,210	6,000	-
LEGAL SERVICES	26,818	14,976	6,744	20,628	12,537	25,000	1,316	20,000	(5,000)
SALES TAX	571	545	-	-	-	-	-	-	-
PROPERTY TAX	-	-	-	205	-	-	-	-	-
WEBSITE HOSTING	-	84	54	141	159	180	84	180	-
TOTAL ADMINISTRATIVE	138,680	90,434	74,535	95,069	78,977	101,373	26,215	96,373	(5,000)
INSURANCE									
INSURANCE (GENERAL LIABILITY)	4,882	21,199	12,972	10,738	10,963	12,059	11,616	12,778	719
TOTAL INSURANCE	4,882	21,199	12,972	10,738	10,963	12,059	11,616	12,778	719
DEBT SERVICE ADMINISTRATION									
DISSEMINATION AGENT - BONDS	2,000	-	2,000	1,000	1,000	2,000	-	2,000	-
ARBITRAGE REBATE	1,950	1,300	650	650	650	650	650	650	-
TRUSTEE FEES	7,042	8,842	-	5,084	5,084	5,084	5,084	5,592	508
TOTAL DEBT SERVICE ADMINISTRATION	10,992	10,142	2,650	6,734	6,734	7,734	5,734	8,242	508
SECURITY:									
SECURITY SYSTEM - CONTRACT (Envera)	3,270	7,073	5,880	5,880	6,048	6,168	3,084	6,168	-
SECURITY MONITORING - EMG	-	-	-	-	401	-	268	-	-
SECURITY SYSTEM - CONTRACT	-	2,963	3,460	865	-	440	-	440	-
SECURITY PATROL - Sheriff	15,318	577	-	-	-	-	-	-	-
SECURITY PATROL - Private (ALAMO)	7,002	30,128	32,351	30,755	31,167	34,200	6,935	34,200	-
SECURITY SYSTEM - MAINTENANCE & IMPROVE.	2,735	-	1,542	1,256	785	1,200	470	1,200	-
TOTAL SECURITY	28,325	40,741	43,232	38,756	38,401	42,008	10,757	42,008	-

**STATEMENT 1
PANTHER TRACE II CDD
ADOPTED BUDGET FY 2019
GENERAL FUND (O&M)**

	FY 2013 ACTUAL	FY 2014 ACTUAL	FY 2015 ACTUAL	FY 2016 ACTUAL	FY 2017 ACTUAL	FY 2018 ADOPTED	FY 2018 YTD - FEB	FY 2019 PROPOSED	2018-2019 VARIANCE
PHYSICAL ENVIRONMENT EXPENSES:									
ELECTRICITY	174,757	163,161	170,118	165,712	149,564	168,000	69,074	168,000	-
STREETLIGHTING LEASE	17,947	22,393	20,622	20,575	24,001	24,000	11,182	25,000	1,000
WATER	10,646	14,778	12,454	20,558	17,868	15,000	17,243	15,000	-
SOLID WASTE DISPOSAL	3,515	3,174	579	1,093	1,394	1,750	655	1,750	-
PET WASTE REMOVAL	-	-	-	-	-	-	-	12,480	12,480
PEST CONTROL	340	344	361	375	390	400	201	400	-
COMMUNICATIONS (Tel, Internet, Tech, Etc.)	7,377	2,316	2,112	2,046	2,033	2,184	902	2,280	96
FACILITY MAINTENANCE (lighting, etc)	-	984	230	-	-	3,000	-	3,000	-
WATERWAY MANAGEMENT PROGRAM - CONTRACT	21,710	19,145	19,020	19,020	19,020	19,020	7,925	19,020	-
WATERWAY MANAGEMENT PROGRAM - OTHER	-	-	-	10,905	3,894	2,000	-	2,000	-
ENTRY & WALLS MAINTENANCE	1,589	65	-	708	525	1,200	-	1,200	-
LANDSCAPE MAINTENANCE - CONTRACT	149,210	147,370	147,084	147,084	147,084	147,084	61,285	201,381	54,297
LANDSCAPE MAINTENANCE - OTHER	3,371	4,405	3,346	-	8,195	35,000	1,495	47,920	12,920
IRRIGATION MAINTENANCE	1,112	2,859	591	8,316	10,218	2,000	1,012	2,000	-
DECORATIVE LIGHTS & MAINTENANCE	11,955	5,167	3,800	4,595	4,463	7,500	4,478	7,500	-
SIGNAGE REPAIRS	6,022	2,950	-	742	677	1,200	-	1,200	-
CAPITAL RESERVES - WELL PUMPS	-	-	-	-	10,080	-	-	-	-
FIELD MISCELLANEOUS	4,532	2,286	3,637	190	-	2,500	3,085	2,500	-
TOTAL PHYSICAL ENVIRONMENT	414,083	391,397	383,954	401,919	399,406	431,838	178,537	512,631	80,793
CLUBHOUSE & AMENITY ADMINISTRATION:									
AMENITY MANAGEMENT	11,298	45,192	45,192	43,134	42,481	43,000	18,060	46,000	3,000
AMENITY MANAGEMENT - (cell phone & reimb expenses)	-	-	792	650	600	600	-	600	-
AMENITY MAINTENANCE & IMPROVEMENTS	-	556	-	-	-	1,500	-	1,500	-
AMENIT EMPLOYEE FICA TAXES	-	-	-	-	3,184	-	1,383	-	-
CLUBHOUSE FACILITY MAINTENANCE (Cleaning)	7,100	5,158	3,900	3,900	4,265	3,900	1,965	3,900	-
CLUBHOUSE FACILITY MAINTENANCE - Other	9,489	7,129	9,446	6,780	12,244	12,000	295	12,000	-
POOL MAINTENANCE - Contract	36,275	23,600	24,710	22,900	19,925	23,900	8,000	23,900	-
POOL PERMITS	425	425	425	425	425	425	-	425	-
POOL MAINTENANCE & MONITORING	-	11,373	8,464	10,128	8,450	9,500	1,919	9,500	-
CLUBHOUSE MISCELLANEOUS SUPPLIES	1,600	2,398	1,467	1,334	1,265	3,000	450	3,000	-
SPECIAL EVENTS	-	5,091	915	1,531	2,857	10,000	98	10,000	-
PLAYGROUND MAINTENANCE	9,771	1,125	-	-	-	3,000	-	3,000	-
CAPITAL OUTLAY ALLOWANCE	-	-	43,442	13,175	56,674	96,477	267,091	83,373	(13,104)
RESERVES CAPITAL - POOL&TENNIS COURT RESURFACE	-	-	-	-	122,033	-	-	-	-
RESERVE CAPITAL - POOL FURNITURE	-	-	-	-	-	-	-	20,160	20,160
RESERVE CAPITAL - INTERIOR RENOVATIONS	-	-	-	-	-	-	-	16,390	16,390
CLUBHOUSE & AMENITY TOTAL	75,958	102,047	138,753	103,957	274,403	207,302	299,261	233,748	26,446
BUDGETED INCREASE FUND BALANCE-CAPITAL RES.	-	-	-	-	-	41,200	-	41,500	300
TOTAL EXPENDITURES	672,920	655,960	656,096	657,173	808,884	843,514	532,120	947,280	103,767
EXCESS OF REVENUE OVER (UNDER) EXPENDITURES	(56,450)	81,124	270,400	154,968	71,758	-	310,551	0	0
OTHER FINANCING SOURCES AND USES									
Transfer In	5,208	121,388	130,000	-	-	-	-	-	-
Transfer Out	-	-	-	-	-	-	-	-	-
Total Other Sources		121,388	130,000	-	-	-	-	-	-
Net Change in Fund Balance	(56,450)	202,512	270,409	154,968	71,758	-	310,551	0	-
FUND BALANCE - BEGINNING	123,068	71,826	274,338	544,747	699,715	699,715	771,473	571,473	-
DECREASE IN FUND BALANCE	-	-	-	-	-	-	-	(36,550)	-
INCREASE IN FUND BALANCE	-	-	-	-	-	41,200	-	41,500	-
FUND BALANCE - ENDING	66,618	274,338	544,747	699,715	771,473	740,915	1,082,024	576,423	-

SPECIAL ASSESSMENTS	FUND BALANCE APPROPRIATION			
Gross Assessments On Roll	986,337	One Quarter Operating Capital		236,820
Discounts 4%	(39,453)	FY 2016 Reserve for Renewal & Replacement		145,600
Collection Fees 4%	(39,453)	FY 2017 Reserve for Renewal & Replacement		40,900
		FY 2018 Reserve for Renewal & Replacement		41,200
		FY 2019 Reserve for Renewal & Replacement		41,500
		Reserves - Pool Replacement		(100,000)
		Reserves - Well Pumps		(10,080)
		Reserve - Pool Furniture		(20,160)
		Reserve - Interior Renovations		(16,390)
		Unassigned		217,033
Net Assessments	907,430			

STATEMENT 2
PANTHER TRACE II CDD
FY 2019 PROPOSED BUDGET
GENERAL FUND (O&M) ASSESSMENT ALLOCATION

1. ERU Methodology

Lot Type	Units	ERU / Unit	Total ERU
Villas 33.5'	110	0.75	82.50
Single Family 40'	318	1.00	318.00
Single Family 50'	199	1.25	248.75
Single Family 60'	173	1.50	259.50
Single Family 70'	129	1.75	225.75
Single Family 85'	190	2.13	404.70
Total	1119		1539.20

2. FY 2019 O&M Assessment Requirement ("AR")

Expenditures	Amount
GENERAL ADMINISTRATIVE LESS CTY CHARGES:	\$ 96,373
INSURANCE:	12,778
DEBT SERVICE ADMINISTRATION	8,242
SECURITY	42,008
PHYSICAL ENVIRONMENT EXPENSES	512,631
CLUBHOUSE & AMENITY ADMINISTRATION:	233,748
NET FUND BALANCE CHANGE	4,950
CAPITAL OUTLAY	-
INCREASE IN MISCELLANEOUS REVENUES	(3,300)
Subtotal (Net)	907,430
Early Payment Discount (4.0%)	39,453
County Charges (4.0%)	39,453
Total (Gross)	\$ 986,336

Total ERU	1,539.2	ERU = EQUIVALENT RESIDENTIAL UNITS
Total AR / ERU - GROSS	\$ 640.82	AR = ASSESSMENT REQUIREMENT
Total AR / ERU - NET	\$ 589.55	

2. FY 2019 Allocation of O&M Assessment (Difference Due to Rounding)

Lot	ERU / Unit	Gross AR / ERU	Gross Assmt / Unit	Units	Total Gross Assmts
Villas 33.5'	0.75	\$ 640.82	\$ 480.62	110	\$ 52,867.65
Single Family 40'	1.00	\$ 640.82	\$ 640.82	318	\$ 203,780.76
Single Family 50'	1.25	\$ 640.82	\$ 801.03	199	\$ 159,403.97
Single Family 60'	1.50	\$ 640.82	\$ 961.23	173	\$ 166,292.79
Single Family 70'	1.75	\$ 640.82	\$ 1,121.44	129	\$ 144,665.11
Single Family 85'	2.13	\$ 640.82	\$ 1,364.95	190	\$ 259,339.85
Total				1119	\$ 986,350.13

3. Prior Year O&M Assessment (Difference Due to Rounding)

Lot	ERU / Unit	Gross AR / ERU	Gross Assmt / Unit	Units (a)	Total Gross Assmts
Villas 33.5'	0.75	\$ 593.35	\$ 445.01	110	\$ 48,951.37
Single Family 40'	1.00	\$ 593.35	\$ 593.35	318	\$ 188,685.30
Single Family 50'	1.25	\$ 593.35	\$ 741.69	199	\$ 147,595.81
Single Family 60'	1.50	\$ 593.35	\$ 890.03	173	\$ 153,974.32
Single Family 70'	1.75	\$ 593.35	\$ 1,038.36	129	\$ 133,948.76
Single Family 85'	2.13	\$ 593.35	\$ 1,263.84	190	\$ 240,128.74
Total FY 2015				1119	\$ 913,284.30

3. Net Change FY 2016 minus Prior Year O&M Assessment

Lot	ERU / Unit	Gross AR / ERU	Gross Assmt / Unit	Units	Total Gross Assmts
Villas 33.5'	0.00	\$ 47.47	\$ 35.60	0	\$ 3,916.28
Single Family 40'	0.00	\$ 47.47	\$ 47.47	0	\$ 15,095.46
Single Family 50'	0.00	\$ 47.47	\$ 59.34	0	\$ 11,808.16
Single Family 60'	0.00	\$ 47.47	\$ 71.20	0	\$ 12,318.47
Single Family 70'	0.00	\$ 47.47	\$ 83.07	0	\$ 10,716.35
Single Family 85'	0.00	\$ 47.47	\$ 100.00	0	\$ 19,200.00
Total Net Change				0	\$ 73,054.72

Gross AR/ERU represents a weighted average

Proposed Change

8.00%

PANTHER TRACE II CDD
CONTRACTS AND EXPENDITURES SUMMARY
STATEMENT 3

FINANCIAL STATEMENT CATEGORY	VENDOR	SERVICE PROVIDED	ANNUAL	PAYMENT SCHEDULE	COMMENTS/SCOPE OF SERVICE
------------------------------	--------	------------------	--------	------------------	---------------------------

EXPENDITURES

GENERAL ADMINISTRATIVE:

BOARD OF SUPEVISORS PAYROLL	BOARD OF SUPERVISORS	LEGISLATIVE	\$ 12,000.00	PER CDD MEETING	PER MEETING. 5 BOARD MEMBERS @ \$200 EACH
PAYROLL TAXES	DISTRICT	FICA & WITHHOLDINGS	\$ 918.00	PER CDD MEETING	7.65% OF BOS PAYROLL
PAYROLL SERVICE FEE	PAYCHEX	PAYROLL PROCESSING	\$ 1,300.00	PER PAYROLL	
TRAVEL PER DEIM	MISC	TRAVEL	\$ 250.00	VARIABLE	ESTIMATED; VARIABLE/DISCRETIONARY
MANAGEMENT CONSULTING SERVICES	DPFG	DISTRICT MANAGEMENT CONSULTING SERVICES	\$ 48,000.00	MONTHLY	AGREEMENT 1
OFFICE SUPPLIES	MISC	VARIOUS	\$ 150.00	VARIABLE	ESTIMATED; VARIABLE/DISCRETIONARY
BANK FEES	TD BANK	BANKING - NEW ACCOUNT	\$ 200.00	VARIABLE	ESTIMATED; NO MAINTENANCE FEES - COST TO ORDER CHECK, DEPOSIT STAMP, DEPOSIT TICKETS AND SPECIAL SERVICES.
MISCELLANEOUS (POSTAGE & COPIES)	MISC	MISC	\$ -	VARIABLE	ESTIMATED; VARIABLE/DISCRETIONARY
MASS MAILING	DPFG	MAILING NOTICE TO RESIDENTS	\$ 2,000.00	VARIABLE	ESTIMATED; VARIABLE
AUDITING	Berger Toombs	ANNUAL AUDIT	\$ 4,200.00	ANNUALLY	FY 2017 Audit

PANTHER TRACE II CDD
CONTRACTS AND EXPENDITURES SUMMARY
STATEMENT 3

FINANCIAL STATEMENT CATEGORY	VENDOR	SERVICE PROVIDED	ANNUAL	PAYMENT SCHEDULE	COMMENTS/SCOPE OF SERVICE
REGULATORY AND PERMIT FEES	FLORIDA DEPARTMENT OF ECONOMIC OPPORTUNITIE S	SPECIAL DISTRICT ANNUAL FILING FEE	\$ 175.00	ANNUALLY	FIXED BY STATUTE
LEGAL ADVERTISEMENTS	TAMPA BAY TIMES	PROVIDE PUBLIC NOTICE	\$ 1,000.00	VARIABLE	ESTIMATED NON- CONTRACTUAL AGREEMENT. AMOUNT VARIES (3X PUBLIC HEARINGS, 1X YEARLY MEETING SCHEDULE)
ENGINEERING SERVICES	STANTEC CONSULTING (FORMERLY WILSON MILLER)	DISTRICT ENGINEER	\$ 6,000.00	VARIABLE	ESTIMATED; VARIABLE/DISCRETIONARY; SEE STANTEC AGREEMENT
LEGAL SERVICES	STRALEY & ROBIN	DISTRICT COUNSEL	\$ 20,000.00	VARIABLE	ESTIMATED; VARIABLE/DISCRETIONARY
SALES TAX	FLA. DEPT. OF REVENUE	SALES AND USE TAX	\$ -	VARIABLE	ESTIMATED; DEPENDS ON MISCELLANEOUS REVENUE (7% OF REVENUE)
PROPERTY TAX			\$ -		LEASE EXPIRED
WEBSITE HOSTING	HOSTGATOR.C OM	WEBSITE ADMINISTRATION	\$ 180.00	VARIABLE	ESTIMATED; AUTOMATIC WITHDRAWEL FROM CREDIT CARD

INSURANCE:

INSURANCE (Public Officials)	EGIS INSURANCE	DISTRICT INSURANCE (Public Officials)	\$ -	ANNUALLY	
INSURANCE (POL, Liability, Property & Casualty)	EGIS INSURANCE	DISTRICT INSURANCE (GENERAL LIABILITY)	\$ 12,778.00	ANNUALLY	CONFIRMED WITH AGENT

PANTHER TRACE II CDD
CONTRACTS AND EXPENDITURES SUMMARY
STATEMENT 3

FINANCIAL STATEMENT CATEGORY	VENDOR	SERVICE PROVIDED	ANNUAL	PAYMENT SCHEDULE	COMMENTS/SCOPE OF SERVICE
------------------------------	--------	------------------	--------	------------------	---------------------------

DEBT SERVICE ADMINISTRATION:

DISSEMINATING AGENT - BONDS	PRAGER SEALY	DISSEMINATION OF BOND INFORMATION	\$ 2,000.00	ANNUALLY	SERIES 2005
ARBITRAGE REBATE	LLS TAX SOLUTIONS	ARBITRAGE REBATE CALCULATION	\$ 650.00	ANNUALLY	FIXED FOR SERIES 2014
TRUSTEE FEES	US BANK	TRUSTEE	\$ 5,592.00	ANNUALLY	TRUSTEE FEE

SECURITY:

SECURITY SYSTEM - CONTRACT (ENVERA)	ENVERA	POOL ALARM MONITORING	\$ 6,168.00	QUARTERLY	PAYMENTS PAID QUARTERLY in the amount of \$1,542. YEARLY AUTO RENEWAL. Increase in contract effective Nov., 2016
SECURITY SYSTEM-CONTRACT (EPM)	EPM	SECURITY SYSTEM	\$ 440.00	MONTHLY	Approximately \$110 quarterly for open/close reports
SECURITY PATROL - SHERIFF	HILLSBOROUGH COUNTY	SECURITY PATROL - OFF DUTY PATROL	\$ -	0	NO LONGER PROVIDE SERVICES FOR THIS DISTRICT SINCE 7/30/2013
SECURITY PATROL - PRIVATE	Alamo Guard Patrol	SECURITY PATROL	\$ 34,200.00	MONTHLY	Rate for secuity guard is \$15.50 , security clubhouse is \$13.50 per hour
SECURITY SYSTEM -MAINTENANCE & IMPROVEMENT	VARIOUS	MAINTENANCE OF SECURITY SYSTEM	\$ 1,200.00	AS NEEDED	
ELECTRICITY	TAMPA ELECTRIC COMPANY (TECO)	GENERAL ELECTRICITY	\$ 168,000.00	MONTHLY	ESTIMATED; USAGE VARIES

PANTHER TRACE II CDD
CONTRACTS AND EXPENDITURES SUMMARY
STATEMENT 3

FINANCIAL STATEMENT CATEGORY	VENDOR	SERVICE PROVIDED	ANNUAL	PAYMENT SCHEDULE	COMMENTS/SCOPE OF SERVICE
STREETLIGHTING LEASE	TAMPA ELECTRIC COMPANY (TECO)	71 LIGHTS & 71 POLES MONTHLY LEASE	\$ 25,000.00	MONTHLY	FIXED RATE AT \$2,030 MONTHLY
WATER	HILLSBOROUGH COUNTY (B.O.C.C.)	WATER/SEWER UTILITY	\$ 15,000.00	MONTHLY	ESTIMATED; USAGE VARIES, ROUNDED
SOLID WASTE DISPOSAL	REPUBLIC SERVICES	SOLID WASTE DISPOSAL	\$ 1,750.00	MONTHLY	\$110 Monthly for one pickup per week. An additional \$100 per any necessary pickups. Budgeted for 4. Contract for 36 months. Began 6/4/14; Ended 6/4/17
PET WASTE REMOVAL	JAYMAN ENTERPRISE	PET WASTE REMOVAL STATIONS	\$ 12,480.00	MONTHLY	Based on 104 days of service per year. \$12 per station (10 stations) per week.
PEST CONTROL	HOME TEAM PEST DEFENSE	PEST CONTROL	\$ 400.00	QUARTERLY	FIXED AT APPROX \$100 per quarter
COMMUNICATIONS (TEL, INTERNET, TECH, ETC)	VERIZON	PHONE & INTERNET	\$ 2,280.00	MONTHLY	ESTIMATED; USAGE VARIES. Approximately \$190 monthly
FACILITY MAINTENANCE	VARIOUS	FIELD MAINTENANCE	\$ 3,000.00	VARIABLE	ESTIMATED; VARIABLE/DISCRETIONARY
WATERWAY MANAGEMENT PROGRAM - CONTRACT	REMSON AQUATICS	LAKE MAINTENANCE	\$ 19,020.00	MONTHLY	FIXED AT \$1,585 MONTHLY
WATERWAY MANAGEMENT PROGRAM - OTHER	REMSON AQUATICS	NONROUTINE SERVICES	\$ 2,000.00	VARIABLE	MISC POND MAINTENANCE ITEMS
ENTRY & WALLS MAINTENANCE	VARIOUS	ENTRY AND WALL MAINTENANCE	\$ 1,200.00	VARIABLE	ESTIMATED; VARIABLE/DISCRETIONARY

PANTHER TRACE II CDD
CONTRACTS AND EXPENDITURES SUMMARY
STATEMENT 3

FINANCIAL STATEMENT CATEGORY	VENDOR	SERVICE PROVIDED	ANNUAL	PAYMENT SCHEDULE	COMMENTS/SCOPE OF SERVICE
LANDSCAPE MAINTENANCE - CONTRACT	YELLOWSTONE	MOWING, DETAILING, FERTILIZATION & PEST CONTROL, IRRIGATION, ANNUALS	\$ 201,381.00	MONTHLY	FIXED; PAGE 17 ON AGREEMENT. MONTHLY SERVICE. PENDING RFP
LANDSCAPE MAINTENANCE - OTHER	YELLOWSTONE	ADDITIONAL SERVICES	\$ 47,920.00	NEW WORK ORDER RELATED IMPROVEMENTS	FIXED; PAGE 17 ON AGREEMENT. INCLUDE REPLENISHMENT - PENDING RFP
IRRIGATION MAINTENANCE	YELLOWSTONE	IRRIGATION REPAIRS	\$ 2,000.00	N/A	AUSTIN OUTDOOR PROVIDES INSPECTION SERVICE IN CONTRACT - THIS IS FOR REPAIR
DECORATIVE LIGHT MAINTENANCE	S.F.C.G. CONTRACTING AND CONSTRUCTION	DECORATIVE LIGHT MAINTENANCE	\$ 7,500.00	VARIABLE	ESTIMATED
SIGNAGE REPAIRS	VARIOUS	SIGNAGE REPAIRS	\$ 1,200.00	VARIABLE	ESTIMATED; VARIABLE/DISCRETIONARY - AMTS IN FY 2014 WERE
Column1	Column2	Column3	Column8	Column10	Column12
AMENITY MANAGEMENT		AMENITY MANAGEMENT	\$ 46,000.00	MONTHLY	Clubhouse Manager (inclusive of taxes to be paid)
AMENITY MANAGEMENT - (cell phone & reimb expenses)			\$ 600.00		
AMENITY MAINTENANCE & IMPROVEMENT	VARIOUS	MAINTENANCE AND II	\$ 1,500.00	VARIABLE	ESTIMATED, VARIABLE/DISCRETIONARY
CLUB FACILITY MAINTENANCE (CLEANING)	Vanguard Cleaning	CLUB FACILITY CLEANING	\$ 3,900.00	VARIABLE	\$325 Mo. 2 x weekly

PANTHER TRACE II CDD
CONTRACTS AND EXPENDITURES SUMMARY
STATEMENT 3

FINANCIAL STATEMENT CATEGORY	VENDOR	SERVICE PROVIDED	ANNUAL	PAYMENT SCHEDULE	COMMENTS/SCOPE OF SERVICE
CLUB FACILITY MAINTENANCE -OTHER	VARIOUS	MAINTENANCE	\$ 12,000.00	VARIABLE	ESTIMATED, VARIABLE/DISCRETIONARY
POOL MAINTENANCE - CONTRACT	HALLELUJAH POOLS	POOL SERVICE FOR 3 TIMES A WEEK	\$ 23,900.00	MONTHLY	BASE ON CONTRACT, \$1700 PER MONTH IN NOV.-MAR., \$2200 EVERY OTHER MONTH EXPIRES 8/01/2018
POOL PERMITS - ANNUAL	HILLSBOROUGH COUNTY PUBLIC HEALTH	ANNUAL POOL PERMITS	\$ 425.00	ANNUALLY	MAIN POOL (\$275) AND INTERACTIVE WATER FEATURE (\$150) - SEE POOL
POOL MAINTENANCE - OTHER	VARIOUS	POOL MAINTENANCE	\$ 9,500.00	VARIABLE	ESTIMATED,includes pool monitors
CLUBHOUSE MISCELLANEOUS SUPPLIES	VARIOUS	MISCELLANEOUS SUPPLIES	\$ 3,000.00	VARIABLE	ESTIMATED, VARIABLE/DISCRETIONARY
SPECIAL EVENTS	VARIOUS	VARIOUS	\$ 10,000.00	VARIABLE	ESTIMATED, VARIABLE/DISCRETIONARY
PLAYGROUND MAINTENANCE			\$ 3,000.00		ESTIMATED
CAPITAL OUTLAY	VARIOUS		\$ 83,373.00		ESTIMATED

EXHIBIT 12.

From: David Steppy
To: [Rebecca Rivas](#)
Subject: Pickleball Court
Date: Monday, May 07, 2018 3:30:49 PM

Rebecca-

I would like to ask the board to have the other tennis court drawn with the lines for a Pickleball court. I contacted Florida Courts and they quoted me a price of \$450. This is a good price and I think it is a good thing to do. If the board does not want to do it, then I'd like approval to raise the money and get it done. But, the board would have to approve that. Can we add it to the agenda for the next meeting?

Thanks for all you do!

Dave Steppy

Sent from my iPad

"
EXHIBIT 15.

Panther Trace

Panther Trace II Community Development District (CDD)

Monday, May 21, 2018

Clubhouse Operations:

Normal Operations

Tennis Court Bleacher Scheduled for delivery Thursday, May 17th

Clubhouse Painting Scheduled for Monday, May 21st and 22nd

Deposit:

Total: \$909.50

Maintenance/Grounds:

General Clubhouse Duties

Reported Non- Working To TECO

Reported Landscape and Irrigation Issues to Yellowstone

Newberry and Weston Monuments Repaired

Programs Update:

Yoga: Every Monday Nights @ 7:30pm

Girls Scouts: Every Tuesday @ 6:30

Cypress Creek Produce Co-Op: Every Tuesday @ 5:30 – 8:30pm

Grind + Cycle: Every Wednesday and Thursday @ 5:30 and 6:45pm

Repairs or Replacements Pending:

Install Magnetic Lock on Tennis Court Gate and Access Card Reader

ADA Truncated Domes Surface Mount Removed and New Ones Installed



PROPOSAL PREPARED FOR

Panther Trace II

4/26/2018



PROPOSAL

04/26/18

CUSTOMER INFORMATION

Panther Trace II

PRICE QUOTE

DESCRIPTION	QTY	RATE	TOTAL
Install Magnetic Lock on Tennis Court Gate	1		\$ 4,280.00
Install Kantech Card Reader on Tennis Court Gate	1		
Install Push to Exit on 4' - 4"x4" Aluminum Post	1		
Install 1" PVC Conduit Underground from Clubhouse to Tennis Court Gate	1		
Install 14/2 Power Wire for Maglock	1		
Install 18/4 Power/Relay Wire for Push to Exit	1		
Install Underground Rated Cat5e Cable to Card Reader	1		
Sub-Total			\$ 4,280.00
Sales Tax		7.00%	\$ 299.60
Total			\$ 4,579.60

Price includes sales tax, if applicable. Price includes one year parts warranty and a 30-day labor warranty. Additional labor warranty is available for purchase. Ask your sales representative for more information.

PAYMENT OPTIONS

CASH CONTRACT

50% Deposit with contract. Remaining balance due on day of installation.

We accept cash, check & all major credit cards. Use of a credit card may constitute in a processing fee.

FINANCE CONTRACT

MHD Communications offers 36 month, 48 month and 60 month options for financing.

If you are interested in financing your project, please request financing options.

ACCEPTANCE OF CONTRACT

The undersigned hereby agrees to purchase the above equipment in accordance with the terms and conditions stated. Until accepted and signed by an officer of seller at its principal office, this agreement shall not become effective and shall not constitute a binding contract. Pricing included on this proposal is valid for thirty days from initial presentation. Unless otherwise stated, this quote does not include surge protection which can help to protect customers from losses due to lightning and other "Acts of God". If you would like a quote for these services, please make a request to your sales representative.

SIGNATURE

DATE



Thank you for taking the time to review my proposal. It has been my pleasure to provide you with a solution for your technology needs. If I can answer any additional questions or provide you with more details please give me a call.

MHD takes pride in our solution-oriented business by offering phone systems, wiring, security systems, computer support, and strategic network systems design to fit your office and budget. We hope you have found the solution you are looking for in MHD. We at MHD want to make your business just that much more successful and we are looking forward to assisting you in doing so very soon!

Sincerely,

A handwritten signature in black ink, appearing to read 'BZocchi', is positioned above the printed name.

Brian Zocchi
813-597-8939 Mobile
813-948-0202 Office
www.mhdcommunications.com
brian@MHDcommunications.com

1020 HILL FLOWER DR
Brooksville, FL 34604

www.jaymanenterprises.com

Date	Estimate #
4/29/2018	309

			Project
Description	Qty	Rate	Total
ADA Truncated Domes Surface mount, Color Brick Red	4	270.00	1,080.00
Remove old pads and install new	4	75.00	300.00
Client Signature		Total \$1,380.00	